

MILLAH MURRAH ANGUS

31st ANNUAL BULL SALE

1pm Thursday September 5th 2019

**AT "GOONAMURRAH" BATHURST
75 BULLS SELL**



www.millahmurrah.com

Elders

MILLAH MURRAH ANGUS

Registered Angus since 1969

“Goonamurrah”
1202 Turondale Road
BATHURST NSW 2795
(02) 6337 1157
0439 179 269
www.millahmurrah.com
info@millahmurrah.com

Welcome to the 31st Annual Millah Murrah Angus Bull Sale.

As the stud moves into its 2nd half century, the Australian beef industry continues to reward farmers for production-oriented traits above all else. The ability of cattle to handle drought, deliver high calving percentages and gain weight rapidly early in life, are still the most important influences on farm gate profitability.

We incorporate all modern technologies, but never waiver from these “doing ease” traits as the foundation of our breeding decisions. We view Angus as the great all-rounder of the industry and, most importantly, the source of the best mother cow in the business. The bulls in this catalogue derive from 50 years breeding along these lines.

The maternal depth behind the bulls in this sale sets them apart. A number of them come from true legends of our programme like Kingdom’s dam, Flower G41; Prue H112 - the record priced mature cow in the breed; her full sister Prue H113 – the only cow in the breed with three bulls to make \$40,000 and Brenda F6 – with progeny in 13 studs across the land.

On the paternal side, we are thrilled with the progeny of the new sires.

Loch Up L133 was the \$85,000 high selling bull of the breed in 2016 and his draft of 18 sons is exceptional for their consistency of depth and bone and overall power. They are wonderfully robust, tough cattle - just what is needed when the Australian climate bears its teeth.

Joining Loch Up are a suite of new sires from the US. LD Capitalist, EF Commando and Baldrige Command are all 1st season sires in Australia. They each pass spectacular fleshing and carcass shape to their progeny. A bull that is even more unique is Spickler Chisum 255. His impressive yearling progeny present the only opportunity to access this exceptional maternal line. We have seen all four sires and their relations at least twice - diligence so critical to successful mating decisions.

These fresh lines are backed by the proven favourites like Kingdom, Klooney and Hallmark, each doing a remarkable job across the country and indeed around the world, to present a first-rate choice of genetic options.

The bulls sell in three age groups as always. Over half the offering is genuinely suitable for use over heifers. Similarly, there are dozens of power bulls to generate the improved weaner weight and cow function associated with the Millah Murrah brand.

Despite another trying season, aside from the yearlings, we have managed to raise the bulls on grass and hay alone. They present in exceptional order, their genetic potential fully expressed, without carrying excess fat. With ruminants in ideal balance for tough conditions, they are primed for work.

We provide plenty of pictures of the bulls and their relatives throughout the catalogue. To see video footage of the bulls, taken in early July, please visit our website.

We lost Dad in late 2017 and early this year, Mum departed. She was the unsung backbone of our family and our business. A wonderfully active woman, in later decades a teenage bout of polio caught up with Mum and limited her capacity to work on the farm. Undeterred, Mum kept deeply involved as a pioneer of computerised herd book recording. She was a favourite of the Angus Society staff in the ‘80’s & ‘90’s as they established the stream-lined systems we enjoy today. Mum was immensely proud of the development of Millah Murrah. We were blessed to inherit what she and Dad started.

Even if you are not in need of a bull this year, we hope you will join us at the sale. If you do attend, please stay afterwards for a drink and something to eat.

ROSS THOMPSON



31st ANNUAL BULL SALE

at "Goonamurrah", 1202 Turondale Road, Bathurst
Thursday, 5th September 2019 at 1.00pm
(NB from 12.45pm bulls will be moving to the pen up yards)

75 Registered Bulls

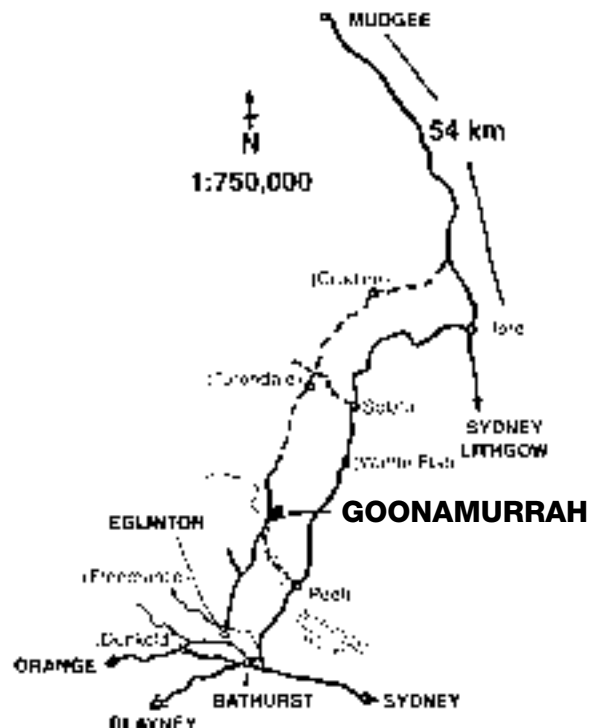
Inspection from 10am on the day of the sale or at other times by appointment with the vendor.

COMING FROM BATHURST

Follow Durham Street, past All Saints College, to Eglinton. From Eglinton, take the Hill End via Turondale Road, for 20 km, "Goonamurrah" is well signed on the right hand side.

COMING FROM MUDGEES

Take the Sydney Road. At Ilford turn right on the Bathurst road. About 28kms from Ilford you will cross the Turon River at Sofala. Once over the bridge, take the road to the right towards Hill End. Follow this winding sealed road until you come to an old tin shed on your left and a left turn to Bathurst. Travel about 25kms along this road towards Bathurst. You will cross Millah Murrah creek and about three kms later, "Goonamurrah" is on the left hand side.



FREE FREIGHT - see page 2 for details.

SELLING AGENTS



Andrew Bickford (Bathurst) 0427 943 781
David Simpson (Bathurst) 0427 399 362
Brian Martin (Bathurst) 0428 637 921
Andy McGeoch (Orange) 0418 737 470

EU
Accredited

J-BAS 8

(see page 3
for details)

Guest Auctioneer:
Paul Dooley 0458 662 646



Ross Thompson



Dimity Thompson



Jane Thompson



Trent Walker



Kevin Betts



Tony Gullifer

MILLAH MURRAH ANGUS

SALE DATE AND PRIOR INSPECTION TIME:

Selling will commence at 1.00pm on Thursday, 5th September 2019. Limited undercover shelter is available but please bring clothing for cold or inclement weather. Sale cattle may be inspected from 10am on the morning of the sale. Inspection at other times may be made by appointment with the vendor.

SELLING SYSTEM:

Sale of animals will be conducted under normal auction conditions. Please check with the Selling Agents to obtain a buyer's number if you are considering making a purchase. Successful Purchasers are requested to give written advice to the Selling Agents, regarding transport arrangements, at the conclusion of the sale.

FREE FREIGHT:

Millah Murrah will provide a free freight service:

- to the local centres of Bathurst, Orange, Oberon, Mudgee, CTLX & surrounds
- to the major centres of Dubbo, Roma, Tamworth, Moree, Albury & Melbourne

Bulls will be delivered as soon as possible following the sale. Any bulls left at "Goonamurrah" beyond one week, post-sale will be ineligible for the free freight service, unless alternate arrangements have been made with the vendor.

This service is only available if co-ordinated through Steve Smith (Dick Smith Transport Dubbo 0428 636 236) for long haul freight, or Allan Markwick (0429 319 219) for local transport.

Onward freight arrangements from the major centres or intermediary points will be the buyer's responsibility. However, where possible, we will endeavour to deliver direct to farm.

This service cannot be guaranteed for buyers who contract for freight with other carriers.

Dick Smith Transport (DST) of Dubbo and Allan Markwick of Bathurst, have been invited to attend the sale to help co-ordinate delivery of stock with the Agents. They can be contacted on 02 6882 2463 or 0428 636 236 (DST) or 0429 319 219 (Allan Markwick).

REBATE:

2% rebate to outside agents *registering buyers, in writing, PRIOR to the sale*, and settling on their behalf within 7 days of the date of invoice.

PHONE AND ONLINE BIDDING:

Sale day land line phone number is 02 6337 1157. Ross' mobile 0439 179 269. Dimity mobile 0422 288 325. Trent mobile 0429 965 167. Jane mobile 0428 375 702. Mobile phone service should be reliable. Live Online Bidding is available through Elite Livestock Auctions. See page 5 for details.



GST:

All animals are sold **exclusive** of GST.

INSURANCE:

Agents' representative will be available at the sale-venue to arrange insurance. Bulls are a valuable and vulnerable piece of farm equipment. We strongly recommend purchasers obtain immediate cover.

REGISTRATION:

Ownership transfer of the bulls will be registered by the vendors with Angus Australia, provided accurate transferee details are supplied with the Buyer's Instruction Form. With this form, please be sure to provide: PIC number, Angus Herd ID (if applicable) and specify if the purchasing herd is EU accredited.

CATERING:

Complimentary lunch is provided. The meat provided post sale is the product of the Alexander Downs Group, owned by the Gill family.



Ross with Stephen & Robert Gill of Alexander Downs

PHYSICAL EXAMINATION OF BULLS:

All bulls offered for sale have passed a semen evaluation including morphology, by Ian Moreland of Stud Care genetics.

They will be vet checked near sale date and only sold if deemed satisfactory for the following inspections:

- Palpation of internal genitalia
- Palpation of scrotal contents
- Visual inspection of structure
- Visual inspection of locomotion

During the mating season, be sure to check the bulls properly each week. In single sire situations, endeavour to rotate the bulls between mobs mid-way through the season.

GENOMIX & SINGLE STEP BREEDPLAN:

The EBV's on each bull incorporate their genomic analysis. Known as "Single Step", the inclusion of genomic analysis reduces the pedigree dependence of the Breedplan model. We are cautiously optimistic about it. Right or wrong, one thing we have noted is how much Single Step spreads the data for the bulls. It is not uncommon for flush brothers to have widely varying post Single Step analysis EBV's, even when their actual raw data is quite similar. With such a heavy influence on the EBV's, clearly the boffins believe it is the way of the future.

MILLAH MURRAH ANGUS

PEDIGREE ASSURANCE:



All animals have been DNA verified to the sire at least and in most cases to the dam as well. We have been sire or parent verifying every animal in the Millah Murrah female herd since

2003. No one has disputed our claim that Millah Murrah is the longest parent verified herd in the world.

The suffix displayed at the end of each animal's name indicates the DNA parentage verification that has been conducted by Angus Australia.

PV : both parents have been verified by DNA

SV : the sire has been verified by DNA

DV : the dam has been verified by DNA

: DNA verification has not been conducted

E : DNA verification has identified that the sire and/or dam may possibly be incorrect, but this cannot be confirmed conclusively.

FEEDING & MANAGEMENT:

Apart from the yearlings, the bulls have been raised on grass and hay/silage only. The yearling bulls have received a DDG pellet supplement never exceeding 0.7% bodyweight per day, as the season has dictated.

With the continuing dry, we may have to give the older bulls a light ration of pellets in the lead up to sale. If this is the case it will never exceed 1% of bodyweight per day.

The bulls are in peak health, with rumens in great balance to deal with whatever pasture conditions they encounter. They have been handled with dogs, ATV's, occasionally with horses, utilities and on foot. None of the bulls has had its feet trimmed in any way.

YEARLING BULL SELECTION:

The yearling bulls must be born early enough in the spring calving season to attain 12 months of age by sale time (there is one exception this year at Lot 57, who is 10 days short of a year).

At point of sale we require them to be well over 500kg with minimum testes size of 35cm, significantly more than the industry standard for bulls of this age.

During the selection process we place a weighting towards bulls with strong calving ease credentials. Being the same age and not overly heavy, they are a logical match for joining to heifers. However, with sound management the yearling bulls don't need to be pigeon-holed as heifer bulls only. Many are sufficiently well grown to work over cows, especially first and second calvers.

The age cut-off criteria, in particular, provides a sound method of keeping selection objective, so that each year some of the top spring born bulls will appear at two years of age. This approach works to throw up outstanding individuals in each age group.

HEALTH TREATMENTS:

The bulls are ready for immediate use. They are treated as follows:

- DNA tested to prove they are not PI (Persistently Infected) with Pestivirus
- Double vaccinated with Pestigard (last treatment May 14th 2019)
- Double vaccinated with Vibrovax (last treatment May 14th 2019)
- Double vaccinated with 7 in 1 (last treatment May 14th 2019)
- Drenched with Eprinex Pour On in August, prior to sale

Millah Murrah cattle are EU accredited.

JBAS:

Under the Johnes Beef Assurance Score (JBAS) system, Millah Murrah Angus stud cattle carry the highest level of assurance possible, **JBAS8**.

Previously Millah Murrah has carried MN3 status since 2001. Our biosecurity programme is overseen by our veterinarian, Dr George Coronos (N7627).

Importation to Western Australia: Western Australia has very strict border crossing requirements with respect to BJD. We have obtained a WA import permit for all bulls in the sale except the 15 yearlings born in South Australia (lots 40, 41, 43, 47, 48, 49, 50, 51, 52, 53, 54, 55, 56, 58 & 59). Should WA entry for any of these bulls be required, we will need to obtain a separate permit after the sale, which could lead to extended delays in delivery.

TEMPERAMENT:

Ben Simpson offered the following observation:

"As a professional animal photographer, I place cattle under extraordinary temperament pressure. I have worked at close quarters with the Millah Murrah cattle for many years and rate it as one of the quietest, most even tempered herds of cattle I have dealt with in my career. They are a pleasure to work with."

We have screened the cattle rigorously for temperament since the Stud's inception in 1969. We know the temperament of the bulls in this sale individually and are confident that under normal circumstances each of them is of sound disposition. Understandably each year on sale day an occasional animal misbehaves due to the big change to the yard area and the pressure of strange people invading their space.



Photos in this catalogue by Ben Simpson

MILLAH MURRAH ANGUS

RECESSIVE GENETIC CONDITIONS:

All bulls in the sale are free of AM, NH, CA & DD by test or pedigree. We believe our herd is entirely free of the red gene however make no guarantees on this.

SEMEN RIGHTS:

All bulls sell with 80% semen marketing rights attached. In doing this we leave the great majority of any potential semen revenue in the buyer's hands. However, by keeping a 20% share, it gives us, as the breeder and party with the greatest knowledge of the bull's background, a seat at the table, in any possible negotiations with semen companies and other parties. By keeping the vendor involved, the 80/20 semen ownership split is designed to give the purchaser the greatest opportunity for semen sales on the top sires in the sale. Should any purchaser wish to operate at the sale on the basis of 100% semen ownership, please contact the vendor at least 24 hours prior to the date of the sale. Under all circumstances, the vendors retain the right to collect 500 straws from any bull in the sale for use in the Millah Murrah and Keringa herds only.

BULL HANDLING:

On arrival at their new home it is important a suitable mob of animals is yarded to greet the bull and minimize the stress on the bull. Suitable animals include pregnant cows, steers, but certainly not other bulls.

We strongly urge breeders to rotate their bulls mid-season. No amount of vet checking, semen examination or paddock observation, will detect all cases of transient issues with bull semen. While it is rare, sometimes a bull looks to be doing everything right, but due to unknown stresses, as much as three months prior to the date of service, conception is not achieved. The greatest insurance against low conception rates a cattle breeder can make is to replace, or swap bulls around, at least three weeks before the end of the joining period.

The bulls are in good joining condition at point of sale, but it is imperative to ensure good nutrition for the bull during the joining period. You should check the bulls regularly to see they are working, especially in the early stages of joining when the majority of problems occur and early intervention can minimize the damage to the bull and to conception rates.

When joining is complete, bulls should be drenched and placed on good pasture to get back into first grade health without being allowed to get over fat.

MATRIARCHS

While there are countless high performing females in the Millah Murrah herd, over the course of time, some cows and dam lines show up with extraordinary regularity. We don't have a hard and fast rule on the criteria to be called a Matriarch cow, but certainly don't hand the title out lightly. At this point in time, we afford the status to six cows only, in the more recent history of the stud; Flower G20, her daughter S110 and granddaughter Y141, Abigail S104, Brenda Y33 and her daughter Brenda F6. They are referred to repeatedly throughout the catalogue. While in some cases, they haven't been the best-looking animals in the herd, it is remarkable how often descendants of these cows rise to the top.



Winsome Thompson's daughter Jane and 6 granddaughters, L to R: Amy Loneragan, Jane Thompson, Kate Loneragan, Twigg Thompson, Olivia Thompson, Skye Loneragan, Millie Thompson

GUARANTEE

1. Every bull is guaranteed to be a breeder at the time of sale and is guaranteed fertile for 12 months from sale day. If a bull should prove infertile or unable to serve cows naturally (provided it is not caused by injury or disease contracted post sale), the purchase price will be refunded or a credit given, equal to the purchase value of the bull less salvage value.
2. The bulls are guaranteed to be of the parentage catalogued. Any claim to the contrary must be lodged within six months of sale date, after which time the vendor's liability is absolved. Similar compensation is offered as in point 1.

HEALTH & SAFETY OF VISITORS TO OUR SALE (RULES & ADVICE)

All the sale bulls have been screened for temperament and are quiet to handle under normal circumstances. However there are inherent risks associated with cattle handling.

VISITORS ENTER THE CATTLE PENS AT THEIR OWN RISK CHILDREN MUST NOT ENTER THE YARDS

People entering the yards are at risk of injury. Be especially alert for bulls fighting and if one is playful with you, do not respond by patting his head. What a bull considers a playful nudge can break human legs! We do not expect the bulls to be aggressive with humans, but sale day places extraordinary pressure on them as they experience an entirely foreign environment. Remember the quietest bull is in fact an unpredictable animal.


Do not crowd the bulls or loiter inside the pens. We cannot cover every example of the dangers of cattle handling, so please use common sense and be alert at all times. Don't enter the pens unnecessarily. If you feel threatened whatsoever, please do not act hardy. The stigma of a person screaming as he dives over a fence is a preferable option to a broken body resulting from "standing up to" an unfamiliar beast.

Please call upon any of the Elders agents for an escort through the bulls if required. The days of bravado with stock have passed under current OH&S legislation.

HOW TO REGISTER with ELITE LIVESTOCK AUCTIONS

Welcome to the new age of selling livestock in Australia and "Happy Bidding"



- 1  Simply go to www.elitelivestockauctions.com.au using your desktop, laptop, iPad, iPhone or android device
- 2  Click on the "Sign Up" page / link
- 3  Create a bidding profile using the bidder registration page.
(You can either register as a livestock agent, company or private buyer.)
- 4  Agree to the Elite Livestock Auctions Terms & Conditions and the Selling Agents Sale Terms & Conditions as printed in the official Sale Catalogue
- 5  Click "Register"
- 6  You will then be notified by email that an account has been created

- 7  Once an account has been created you are all "Set to Bid"
- 8  Each auction can then be viewed by clicking "Live Auction" logo on the Elite Livestock Auctions website
- 9  Once you receive email notification that your account has been created please go to the sale you wish to bid at and click "Request to Bid"
- 10  The sale agents will then approve your application to bid and on the sale catalogue you will see "✓ Bid Request Approved"
- 11  On Sale day simply login, click "Enter Auction" on the catalogue page and you can start bidding.
(There is no need for software download)
- 12  At the completion of the auction, invoicing will be carried out as per your registration details by the Selling Agents.

Having trouble registering and logging in?
Contact Elite Livestock Auctions
1300 15 31 35

Elite Livestock Auctions ABN 19 604 627 607

 340 Curtin Avenue West, Eagle Farm QLD 4009

 1300 15 31 35

 07 3041 5053

 www.elitelivestockauctions.com.au



MID-JULY 2019 ANGUS AUSTRALIA BREEDPLAN REFERENCE TABLES

BREED AVERAGE EBVs																													
Calving Ease					Fertility					Carcass					Other					Structure					Selection Indexes				
CEDir CEDtrs					SS DTC CWT EMA RIB P8					Greater IMF NFFH DOC					FA FC RA RH RS					ABI DOM GRN GRS									
Brd Avg	+0.2	+0.4	-4.0	+4.3	+44	+81	+106	+01	+15	+1.8	-4.2	+59	+5.1	+0.0	-0.2	+0.4	+1.7	+0.14	+4	+0	-1	-2	-0.3	-0.4	+114	+109	+119	+111	

* Breed average represents the average EBv of all 2017 drop Angus and Angus influenced animals analysed in the Mid-July 2019 Angus Australia BREEDPLAN genetic evaluation.

PERCENTILE BANDS TABLE																													
Calving Ease					Fertility					Carcass					Other					Structure					Selection Indexes				
CEDir CEDtrs					SS DTC CWT EMA RIB P8					Greater IMF NFFH DOC					FA FC RA RH RS					ABI DOM GRN GRS									
Less Calving Difficulty	+5.0	+4.5	-9.7	+0.4	+61	+109	+146	+139	+26	+3.8	-8.9	+85	+11.1	+3.1	+3.2	+2.6	+4.0	-0.51	+31	+21	+24	+14	+4.7	+0.4	+157	+135	+182	+145	Profitability
More Calving Difficulty	-7.4	-5.2	+1.3	+8.2	+24	+50	+60	+41	+6	-0.1	+1.5	+25	-0.1	-2.8	-3.5	-1.7	-0.4	+0.84	-20	-35	-33	-29	-10.7	-5.5	+53	+72	+33	+64	Profitability
Less Calving Difficulty	+5.0	+4.5	-9.7	+0.4	+61	+109	+146	+139	+26	+3.8	-8.9	+85	+11.1	+3.1	+3.2	+2.6	+4.0	-0.51	+31	+21	+24	+14	+4.7	+0.4	+157	+135	+182	+145	Profitability
More Calving Difficulty	-7.4	-5.2	+1.3	+8.2	+24	+50	+60	+41	+6	-0.1	+1.5	+25	-0.1	-2.8	-3.5	-1.7	-0.4	+0.84	-20	-35	-33	-29	-10.7	-5.5	+53	+72	+33	+64	Profitability

* The percentile bands represent the distribution of EBVs across the 2017 drop Angus and Angus influenced animals analysed in the Mid-July 2019 Angus Australia BREEDPLAN genetic evaluation.

For detailed description of Breedplan visit www.angusaustralia.com.au and for further discussion of Breedplan's merits visit www.millahmurrah.com



Bill Cornell



Conrad Strahorn & James Plowman



Colin Rice



Brad Kupsch – Black Tara Angus



Damien Sotter



Dave Simpson



Diana Hurley



Geoff Baker



Greg Reeves



Josh Evans Devans Angus



Julie & Jeremy Shaw



Lucy & Herb MacKenzie – Seaforth Angus



Jim Durkin



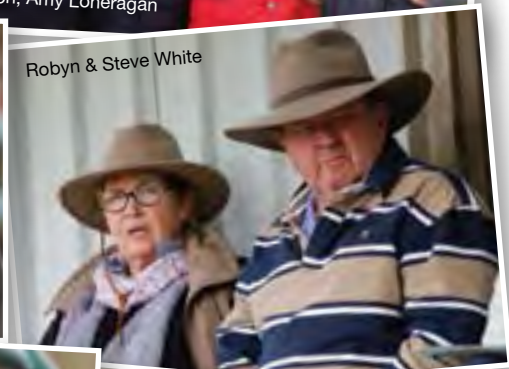
Ian Bonham, Skye Loneragan, Jane Thompson, Amy Loneragan



Matt Crozier



Richie Hooper



Robyn & Steve White



Sam Broinowski



Simon Emery



Billy Davis



Steve Harris

1 MILLAH MURRAH LOCH UP P28^{PV}

Born: 2/02/2018 Ident: NMMP28 Regn: HBR
AMFU,CAFU,DDFU,NHFU



SITZ UPWARD 307R^{SV}
THOMAS UP RIVER 1614^{PV}
THOMAS CAROL 7595[#]
NMMML133 MILLAH MURRAH LOCH UP L133^{PV}
TE MANIA EMPEROR E343^{PV}
MILLAH MURRAH BRENDA H49^{SV}
MILLAH MURRAH BRENDA E64^{PV}
WAITARA VALLEY TEX[#]
HINGAIA 469[#]
HINGAIA 910[#]

NMMK1 MILLAH MURRAH ABIGAIL K1^{SV}
MILLAH MURRAH EQUATOR D78^{PV}
MILLAH MURRAH ABIGAIL G2^{PV}
MILLAH MURRAH ABIGAIL A65^{PV}

August 2019 Angus Australia BREEDPLAN									
Angus	Calv. Ease Direct	Calv. Ease Dtrs	Gest Lgth	Birth Wt. (kg)	200 Day (kg)	400 Day (kg)	600 Day (kg)	Mat. Cow (kg)	Milk (kg)
EBV	-0.5	+1.8	-7.9	+5.2	+48	+91	+119	+107	+16
Acc	52%	49%	84%	74%	72%	70%	70%	65%	57%
Scrot. Size (cm)	Days to Calv.	Carc Wt. (kg)	EMA (sqcm)	Rib Fat (mm)	Rump Fat (mm)	RBV %	IMF %	NFI-F (kg/day)	Doc
+0.4	-6.7	+67	-0.6	-0.5	-0.4	-0.1	+0.5	-1.00	+16
67%	42%	62%	62%	65%	62%	58%	61%	59%	60%

Traits Observed: GL,BWT,200WT(x2),400WT(x2),Scan(EMA,Rib,Rump,IMF),DOC,Genomics(CE,S-Step)

Selection Indexes

Angus Breeding	Domestic	Heavy Grain	Heavy Grass
+\$106	+\$103	+\$102	+\$107

The depth of rib, bone & capacity Loch Up transmits is reflected in extraordinary weight for age in the sons. With his ultra-short gestation, P28 presents a versatile option for cows & heifers. Excellent maternal background carrying 469 and the famed Abigail S104 lineage. K1's 1st daughter fetched \$12,000. This is her 1st son to sell.

Purchaser: \$

2 MILLAH MURRAH LOCH UP P47^{SV}

Born: 6/02/2018 Ident: NMMP47 Regn: HBR
AMFU,CAFU,DDFU,NHFU



SITZ UPWARD 307R^{SV}
THOMAS UP RIVER 1614^{PV}
THOMAS CAROL 7595[#]
NMMML133 MILLAH MURRAH LOCH UP L133^{PV}
TE MANIA EMPEROR E343^{PV}
MILLAH MURRAH BRENDA H49^{SV}
MILLAH MURRAH BRENDA E64^{PV}
TE MANIA INFINITY 04 379 AB[#]
MILLAH MURRAH INFINITY D105^{PV}
MILLAH MURRAH PRUE B65^{PV}
NMMG33 MILLAH MURRAH FLOWER G33^{PV}
KMK ALLIANCE 6595 I87[#]
MILLAH MURRAH FLOWER D45^{PV}
MILLAH MURRAH FLOWER Y141^{SV}

August 2019 Angus Australia BREEDPLAN									
Angus	Calv. Ease Direct	Calv. Ease Dtrs	Gest Lgth	Birth Wt. (kg)	200 Day (kg)	400 Day (kg)	600 Day (kg)	Mat. Cow (kg)	Milk (kg)
EBV	+0.0	+0.9	-5.3	+4.6	+50	+85	+112	+102	+21
Acc	51%	46%	85%	74%	72%	70%	70%	65%	58%
Scrot. Size (cm)	Days to Calv.	Carc Wt. (kg)	EMA (sqcm)	Rib Fat (mm)	Rump Fat (mm)	RBV %	IMF %	NFI-F (kg/day)	Doc
+2.8	-5.9	+60	+0.7	+0.5	+0.4	-1.0	+2.8	+0.21	+15
67%	38%	61%	61%	64%	62%	57%	60%	57%	59%

Traits Observed: GL,BWT,200WT(x2),400WT(x2),Scan(EMA,Rib,Rump,IMF),DOC,Genomics(CE,S-Step)

Selection Indexes

Angus Breeding	Domestic	Heavy Grain	Heavy Grass
+\$112	+\$103	+\$123	+\$106

6th calf from a strong performing cow out of the Flower G20 line. G33's progeny have averaged \$10,000. This is her best calf to date and a bull with plenty of punch to fit the dual purpose cow and heifer role.

Purchaser: \$

3 MILLAH MURRAH LOCH UP P4^{PV}

Born: 25/01/2018 Ident: NMMP4 Regn: HBR
AMFU,CAFU,DDFU,NHFU



SITZ UPWARD 307R^{SV}
THOMAS UP RIVER 1614^{PV}
THOMAS CAROL 7595[#]
NMMML133 MILLAH MURRAH LOCH UP L133^{PV}
TE MANIA EMPEROR E343^{PV}
MILLAH MURRAH BRENDA H49^{SV}
MILLAH MURRAH BRENDA E64^{PV}
MILLAH MURRAH EQUATOR D78^{PV}
MILLAH MURRAH DOC F159^{PV}
HAZELDEAN Y275^{SV}

NMMJ181 MILLAH MURRAH FLOWER J181^{SV}
HINGAIA 469[#]
MILLAH MURRAH FLOWER F101^{PV}
MILLAH MURRAH FLOWER Y141^{SV}

August 2019 Angus Australia BREEDPLAN									
Angus	Calv. Ease Direct	Calv. Ease Dtrs	Gest Lgth	Birth Wt. (kg)	200 Day (kg)	400 Day (kg)	600 Day (kg)	Mat. Cow (kg)	Milk (kg)
EBV	-2.8	-0.3	-7.2	+8.3	+65	+110	+147	+137	+18
Acc	52%	47%	73%	74%	72%	71%	70%	64%	56%
Scrot. Size (cm)	Days to Calv.	Carc Wt. (kg)	EMA (sqcm)	Rib Fat (mm)	Rump Fat (mm)	RBV %	IMF %	NFI-F (kg/day)	Doc
+2.7	-5.7	+79	+2.9	-1.3	-0.9	+1.3	+1.0	-0.49	+21
67%	39%	62%	62%	64%	62%	57%	61%	58%	60%

Traits Observed: BWT,200WT(x2),400WT(x2),Scan(EMA,Rib,Rump,IMF),DOC,Genomics(CE,S-Step)

Selection Indexes

Angus Breeding	Domestic	Heavy Grain	Heavy Grass
+\$130	+\$118	+\$136	+\$127

One of the heaviest weight for age bulls we have produced. P4 is bred in the pink. J181 has a brilliant progeny sales records. Her 1st son fetched \$28,000 to Heart Angus. Her 2nd son made \$30,000 to Dalwhinnie. Descended from the legendary Flower G20, this is J181's 3rd bull calf. He is a tremendous prospect.

Purchaser: \$



Lot 3: Loch Up P4



Lot 2: Loch Up P47

4 MILLAH MURRAH LOCH UP P1^{SV}

Born: 24/01/2018 Ident: NMMP1 Regn: HBR
AMFU,CAFU,DDFU,NHFU



SITZ UPWARD 307R^{SV}
THOMAS UP RIVER 1614^{PV}
THOMAS CAROL 7595#
NMML133 MILLAH MURRAH LOCH UP L133^{PV}
TE MANIA EMPEROR E343^{PV}
MILLAH MURRAH BRENDA H49^{SV}
MILLAH MURRAH BRENDA E64^{PV}
LEACHMAN RIGHT TIME^{SV}
BT RIGHT TIME 24J#
SITZ EVERELDA ENTENSE 1905#
NMMG265 MILLAH MURRAH RADO G265^{PV}
THE MEADOWS 469 DESIGNER A64^{PV}
MILLAH MURRAH RADO D136^{PV}
MILLAH MURRAH RADO B32^{PV}



Lot 4: Loch Up P1

August 2019 Angus Australia BREEDPLAN									
	Calv. Ease Direct	Calv. Ease Dtrs	Gest Lgth	Birth Wt. (kg)	200 Day (kg)	400 Day (kg)	600 Day (kg)	Mat. Cow (kg)	Milk (kg)
EBV	-0.6	+0.5	-4.7	+4.4	+53	+95	+127	+111	+23
Acc	53%	49%	73%	74%	73%	71%	71%	66%	58%
Scrot. Size (cm)	Days to Calv.	Carc Wt. (kg)	EMA (sqcm)	Rib Fat (mm)	Rump Fat (mm)	RBV %	IMF %	NFI-F (kg/day)	Doc
+1.5	-5.8	+72	+5.2	+0.4	+0.7	+0.0	+1.4	-0.18	+11
68%	41%	63%	63%	66%	63%	59%	62%	59%	62%

Trails Observed: BWT,200WT(x2),400WT(x2),Scan(EMA,Rib,Rump,IMF),DOC,Genomics(CE,S-Step)

Selection Indexes			
Angus Breeding	Domestic	Heavy Grain	Heavy Grass
+\$122	+\$110	+\$123	+\$121

P1 scanned #1 of his 50 bull group for EMA and IMF. He comes from a beautiful cow, one of three sisters all used in our donor programme. This is her 2nd bull to date. G265's 1st son fetched \$14,000 as a yearling in 2016. A full brother to P1 sells at Lot 6. Several G265 daughters are retained in the herd. Another bull with flexibility for use on heifers or cows.

Purchaser:\$.....

5 MILLAH MURRAH LOCH UP P35^{PV}

Born: 3/02/2018 Ident: NMMP35 Regn: HBR
AMFU,CAFU,DDFU,NHFU



SITZ UPWARD 307R^{SV}
THOMAS UP RIVER 1614^{PV}
THOMAS CAROL 7595#
NMML133 MILLAH MURRAH LOCH UP L133^{PV}
TE MANIA EMPEROR E343^{PV}
MILLAH MURRAH BRENDA H49^{SV}
MILLAH MURRAH BRENDA E64^{PV}
WAIMATA E230#
MILWILLAH LAD E158^{SV}
TE MANIA MITTAGONG X114^{SV}
NMMJ154 MILLAH MURRAH BRENDA J154^{SV}
VERMILION YELLOWSTONE#
MILLAH MURRAH BRENDA A72^{PV}
MILLAH MURRAH BRENDA Y33#

6 MILLAH MURRAH LOCH UP P26^{SV}

Born: 1/02/2018 Ident: NMMP26 Regn: HBR
AMFU,CAFU,DDFU,NHFU



SITZ UPWARD 307R^{SV}
THOMAS UP RIVER 1614^{PV}
THOMAS CAROL 7595#
NMML133 MILLAH MURRAH LOCH UP L133^{PV}
TE MANIA EMPEROR E343^{PV}
MILLAH MURRAH BRENDA H49^{SV}
MILLAH MURRAH BRENDA E64^{PV}
LEACHMAN RIGHT TIME^{SV}
BT RIGHT TIME 24J#
SITZ EVERELDA ENTENSE 1905#
NMMG265 MILLAH MURRAH RADO G265^{PV}
THE MEADOWS 469 DESIGNER A64^{PV}
MILLAH MURRAH RADO D136^{PV}
MILLAH MURRAH RADO B32^{PV}



Rado G265: dam of Lot 6

August 2019 Angus Australia BREEDPLAN									
	Calv. Ease Direct	Calv. Ease Dtrs	Gest Lgth	Birth Wt. (kg)	200 Day (kg)	400 Day (kg)	600 Day (kg)	Mat. Cow (kg)	Milk (kg)
EBV	+0.0	+0.0	-9.0	+8.1	+62	+109	+147	+132	+18
Acc	51%	46%	84%	74%	72%	70%	70%	64%	56%
Scrot. Size (cm)	Days to Calv.	Carc Wt. (kg)	EMA (sqcm)	Rib Fat (mm)	Rump Fat (mm)	RBV %	IMF %	NFI-F (kg/day)	Doc
+2.1	-5.8	+79	+6.5	-1.9	-3.6	+2.0	+1.5	-0.44	+11
66%	38%	61%	62%	65%	62%	57%	61%	58%	59%

Trails Observed: GL,BWT,200WT(x2),400WT(x2),Scan(EMA,Rib,Rump,IMF),DOC,Genomics(CE,S-Step)

Selection Indexes			
Angus Breeding	Domestic	Heavy Grain	Heavy Grass
+\$146	+\$128	+\$162	+\$138

P35 displays so much bone and depth. Descended from the legendary Brenda Y33 on both sides of his pedigree. The dam's only son fetched \$12,000 in 2017. P35 will deliver front pen steers and foundation quality replacement heifers.

Purchaser:\$.....

August 2019 Angus Australia BREEDPLAN									
	Calv. Ease Direct	Calv. Ease Dtrs	Gest Lgth	Birth Wt. (kg)	200 Day (kg)	400 Day (kg)	600 Day (kg)	Mat. Cow (kg)	Milk (kg)
EBV	+0.8	+1.2	-2.2	+1.3	+38	+74	+95	+74	+23
Acc	53%	49%	73%	74%	73%	71%	71%	66%	58%
Scrot. Size (cm)	Days to Calv.	Carc Wt. (kg)	EMA (sqcm)	Rib Fat (mm)	Rump Fat (mm)	RBV %	IMF %	NFI-F (kg/day)	Doc
+1.6	-6.1	+58	+2.7	+0.3	+1.2	-0.6	+1.6	-0.29	+11
68%	41%	62%	63%	66%	63%	59%	62%	59%	62%

Trails Observed: BWT,200WT(x2),400WT(x2),Scan(EMA,Rib,Rump,IMF),DOC,Genomics(CE,S-Step)

Selection Indexes			
Angus Breeding	Domestic	Heavy Grain	Heavy Grass
+\$100	+\$98	+\$97	+\$101

Full ET brother to the thumping bull at Lot 4 and no slouch by comparison. The data gives confidence for use on heifers, but there is plenty of scale to this bull and he is ideally suited to go over cows too.

Purchaser:\$.....

7 MILLAH MURRAH LOCH UP P55^{SV}

Born: 8/02/2018 Ident: NMMP55 Regn: HBR
AMFU,CAFU,DDFU,NHFU



SITZ UPWARD 307R^{SV}
THOMAS UP RIVER 1614^{PV}
THOMAS CAROL 7595[#]

NMML133 MILLAH MURRAH LOCH UP L133^{PV}

TE MANIA EMPEROR E343^{PV}
MILLAH MURRAH BRENDA H49^{SV}
MILLAH MURRAH BRENDA E64^{PV}

BT RIGHT TIME 24J[#]
CARRINGTON PARK TIME ON B7^{PV}
CARRINGTON PARK EMPRESS Z30^{PV}

NMMG112 MILLAH MURRAH BRENDA G112^{PV}

YTHANBRAE HENRY VIII U8^{SV}
MILLAH MURRAH BRENDA Y33[#]
MILLAH MURRAH BRENDA U121[#]

August 2019 Angus Australia BREEDPLAN										
Calv. Ease Direct	Calv. Ease Dtrs	Gest Lgth	Birth Wt. (kg)	200 Day (kg)	400 Day (kg)	600 Day (kg)	Mat. Cow (kg)	Milk (kg)		
EBV	-1.3	-0.1	-4.8	+7.3	+61	+105	+139	+121	+23	
Acc	52%	49%	85%	75%	73%	71%	71%	66%	59%	
Scrot. Size (cm)	Days to Calv.	Carc Wt. (kg)	EMA (sqcm)	Rib Fat (mm)	Rump Fat (mm)	RBV %	IMF %	NFI-F (kg/day)	Doc	
+3.3	-5.5	+82	+6.5	-2.2	-2.2	+2.4	+0.9	-0.80	+13	
69%	40%	63%	63%	65%	63%	59%	62%	59%	60%	

Traits Observed: GL,BWT,200WT(x2),400WT(x2),DOC,Genomics(CE,S-Step)

Selection Indexes

Angus Breeding	Domestic	Heavy Grain	Heavy Grass
+\$134	+\$124	+\$140	+\$131

Powerful bull carrying the amazing matriarch cow Brenda Y33 on both sides of his pedigree. If there is one defining strength of the MM programme it is the maternal depth of the herd. Accessing a double dose of cows like Y33 virtually assures a quality phenotypic outcome. P55's dam has a flawless production record with sons selling to \$16,000.

Purchaser: \$

8 MILLAH MURRAH LOCH UP P69^{SV}

Born: 15/02/2018 Ident: NMMP69 Regn: HBR
AMFU,CAFU,DDFU,NHFU



SITZ UPWARD 307R^{SV}
THOMAS UP RIVER 1614^{PV}
THOMAS CAROL 7595[#]

NMML133 MILLAH MURRAH LOCH UP L133^{PV}

TE MANIA EMPEROR E343^{PV}
MILLAH MURRAH BRENDA H49^{SV}
MILLAH MURRAH BRENDA E64^{PV}

MYTTY IN FOCUS[#]
FORRES BENAUD B1^{PV}
ST PAULS RUTH Y218^{PV}

NMMG67 MILLAH MURRAH FLOWER G67^{PV}

BOOROOMOOKA NEUTRON A238^{PV}
MILLAH MURRAH FLOWER E128^{PV}
MILLAH MURRAH FLOWER B81^{PV}

August 2019 Angus Australia BREEDPLAN										
Calv. Ease Direct	Calv. Ease Dtrs	Gest Lgth	Birth Wt. (kg)	200 Day (kg)	400 Day (kg)	600 Day (kg)	Mat. Cow (kg)	Milk (kg)		
EBV	-1.1	-1.2	+0.5	+6.1	+55	+86	+116	+118	+12	
Acc	50%	46%	85%	74%	72%	70%	70%	65%	58%	
Scrot. Size (cm)	Days to Calv.	Carc Wt. (kg)	EMA (sqcm)	Rib Fat (mm)	Rump Fat (mm)	RBV %	IMF %	NFI-F (kg/day)	Doc	
+2.4	-5.9	+67	-0.2	-0.7	-1.0	-0.5	+2.0	-0.12	+10	
67%	37%	61%	61%	64%	61%	57%	60%	56%	58%	

Traits Observed: GL,BWT,200WT(x2),400WT(x2),DOC,Genomics(CE,S-Step)

Selection Indexes

Angus Breeding	Domestic	Heavy Grain	Heavy Grass
+\$103	+\$97	+\$109	+\$99

Visually P69 displays plenty of growth, backed by a pedigree with the same. His dam possesses incredible doing ability. G67's two sons have sold to average \$11,000.

Purchaser: \$

9 MILLAH MURRAH KINGDOM P13^{PV}

Born: 27/01/2018 Ident: NMMP13 Regn: HBR
AMFU,CAFU,DDFU,NHFU



WAITARA VALLEY TEX[#]
HINGAIA 469[#]
HINGAIA 910[#]

NMMK35 MILLAH MURRAH KINGDOM K35^{PV}

BT RIGHT TIME 24J[#]
MILLAH MURRAH FLOWER G41^{PV}
MILLAH MURRAH FLOWER C15^{SV}

BASIN FRANCHISE P142[#]
EF COMPLEMENT 8088^{PV}
EF EVERELDA ENTENSE 6117[#]

NMML76 MILLAH MURRAH FLOWER L76^{PV}

MILLAH MURRAH NEUTRON E78^{PV}
MILLAH MURRAH FLOWER H42^{PV}
MILLAH MURRAH FLOWER C2^{SV}

August 2019 Angus Australia BREEDPLAN										
Calv. Ease Direct	Calv. Ease Dtrs	Gest Lgth	Birth Wt. (kg)	200 Day (kg)	400 Day (kg)	600 Day (kg)	Mat. Cow (kg)	Milk (kg)		
EBV	-4.9	-0.7	-5.6	+8.5	+60	+103	+138	+124	+13	
Acc	55%	55%	83%	73%	71%	70%	69%	65%	60%	
Scrot. Size (cm)	Days to Calv.	Carc Wt. (kg)	EMA (sqcm)	Rib Fat (mm)	Rump Fat (mm)	RBV %	IMF %	NFI-F (kg/day)	Doc	
+0.8	-4.2	+69	+8.4	-0.1	+0.1	+1.1	+0.7	-0.29	+10	
66%	44%	64%	64%	67%	64%	61%	63%	57%	59%	

Traits Observed: GL,BWT,200WT(x2),400WT(x2),Scan(EMA,Rib,Rump,IMF),DOC,Genomics(CE,S-Step)

Selection Indexes

Angus Breeding	Domestic	Heavy Grain	Heavy Grass
+\$120	+\$110	+\$117	+\$121

An awesome example of what Kingdom brings to the table. So much length, thickness & style. A cattlemen's favourite across the globe, Kingdom underlined his international popularity at the recent Kaharau sale in NZ, where 14 of his sons sold to the sale top of \$78,000, averaging almost \$20,000! P13 is one of Kingdom's best.

Purchaser: \$



Brenda G112: dam of Lot 7



Flower H42: grand dam of Lot 9, pictured at 2 years

10 MILLAH MURRAH PATENT P62^{SV}

Born: 10/02/2018 Ident: NMMP62 Regn: HBR
AMFU,CAFU,DDFU,NHFU



TE MANIA BERKLEY B1^{PV}
TE MANIA EMPEROR E343^{PV}
TE MANIA LOWAN Z74^{PV}
QQFH147 ASCOT HALLMARK H147^{PV}
MILLAH MURRAH DIGBY D108^{PV}
MILLAH MURRAH BRENDA F123^{PV}
MILLAH MURRAH BRENDA D113^{PV}
BT RIGHT TIME 24J[#]
CARRINGTON PARK TIME ON B7^{PV}
CARRINGTON PARK EMPRESS Z30^{PV}
NMMG56 MILLAH MURRAH FLOWER G56^{PV}
BOOROOMOOKA NEUTRON A238^{PV}
MILLAH MURRAH FLOWER D156^{PV}
MILLAH MURRAH FLOWER A40^{PV}

August 2019 Angus Australia BREEDPLAN									
	Calv. Ease Direct	Calv. Ease Dtrs	Gest Lgth	Birth Wt. (kg)	200 Day (kg)	400 Day (kg)	600 Day (kg)	Mat. Cow (kg)	Milk (kg)
EBV	-0.2	+0.1	-2.2	+4.2	+48	+90	+128	+103	+18
Acc	54%	51%	85%	75%	72%	71%	71%	68%	63%
Scrot. Size (cm)	Days to Calv.	Carc Wt. (kg)	EMA (sqcm)	Rib Fat (mm)	Rump Fat (mm)	RBV %	IMF %	NFI-F (kg/day)	Doc
+4.1	-6.4	+72	+0.9	+2.1	+2.6	-1.0	+1.6	+0.52	-6
66%	44%	66%	65%	68%	65%	63%	64%	58%	59%

Traits Observed: GL,BWT,200WT(x2),400WT(x2),DOC,Genomics(CE,S-Step)

Selection Indexes			
Angus Breeding	Domestic	Heavy Grain	Heavy Grass
+\$124	+\$105	+\$127	+\$122

Cleaned fronted, big framed son of the perennial favourite at Millah Murrah, Hallmark. Similar to many of the bulls in this catalogue, P62 presents a versatile, cow & heifer bull option. His dam has never missed a beat for us with daughters selling to \$28,000. This is her 1st son.

Purchaser: \$.....



Kingdom K35: sire of Lot 9



Lot 9: Kingdom P13



Ela A204: 3rd dam of Lot 11 and 4th dam of Lot 12.



Lot 11: Proceed P23

11 MILLAH MURRAH PROCEED P23^{PV}

Born: 31/01/2018 Ident: NMMP23 Regn: HBR
AMFU,CAFU,DDFU,NHFU



G A R PROGRESS^{SV}
H P C A PROCEED[#]
G A R 28 AMBUSH L119[#]
NMML237 MILLAH MURRAH PROCEED L237^{PV}
TE MANIA EMPEROR E343^{PV}
MILLAH MURRAH FLOWER H202^{SV}
MILLAH MURRAH FLOWER F199^{PV}
WAITARA VALLEY TEX[#]
HINGAIA 469[#]
HINGAIA 910[#]
NMMK7 MILLAH MURRAH ELA K7^{SV}
ARDROSSAN APOLLO D324^{PV}
MILLAH MURRAH ELA G88^{SV}
MILLAH MURRAH ELA A204[#]

August 2019 Angus Australia BREEDPLAN									
	Calv. Ease Direct	Calv. Ease Dtrs	Gest Lgth	Birth Wt. (kg)	200 Day (kg)	400 Day (kg)	600 Day (kg)	Mat. Cow (kg)	Milk (kg)
EBV	-0.1	+0.5	-2.7	+5.4	+48	+87	+118	+118	+16
Acc	48%	47%	84%	73%	69%	67%	67%	63%	56%
Scrot. Size (cm)	Days to Calv.	Carc Wt. (kg)	EMA (sqcm)	Rib Fat (mm)	Rump Fat (mm)	RBV %	IMF %	NFI-F (kg/day)	Doc
+0.2	-3.5	+65	+3.3	+2.0	+1.3	-1.2	+1.3	-0.10	+21
63%	40%	61%	59%	63%	59%	56%	58%	51%	51%

Traits Observed: GL,BWT,200WT(x2),400WT(x2),Scan(EMA,Rib,Rump,IMF),DOC,Genomics(CE,S-Step)

Selection Indexes			
Angus Breeding	Domestic	Heavy Grain	Heavy Grass
+\$98	+\$93	+\$94	+\$102

P23 is an impressive beast, carrying phenomenal depth and easy fleshing. His maternal line stems from Kruse Time's dam A204. The dam, K7 has ET progeny in 7 studs across the country. Her 1st natural calf was a heifer that fetched a whopping \$40,000 in 2017. Her only other natural calf was a bull that sold for \$16,000 last year.

Purchaser: \$.....



Lot 12: Paratrooper P15.

12 MILLAH MURRAH PARATROOPER P15^{PV}

Born: 29/01/2018 Ident: NMMP15 Regn: HBR
AMFU,CAFU,DDFU,NHFU



BASIN FRANCHISE P142[#]
EF COMPLEMENT 8088^{PV}
EF EVERELDA ENTENSE 6117[#]
USA17082311 EF COMMANDO 1366^{PV}
B/R AMBUSH 28[#]
RIVERBEND YOUNG LUCY W1470[#]
RIVERBEND YOUNG LUCY T1080[#]
HIGHLANDER OF STERN AB[#]
MILLAH MURRAH HIGHLANDER G18^{SV}
MILLAH MURRAH PRUE D85^{PV}
NMMM9 MILLAH MURRAH ELA M9^{PV}
MATAURI REALITY 839[#]
MILLAH MURRAH ELA K127^{SV}
MILLAH MURRAH ELA G88^{SV}



Kruse Time K400



Ela G88: 3rd dam of Lot 12

August 2019 Angus Australia BREEDPLAN

	Calv. Ease Direct	Calv. Ease Dtrs	Gest Lgth	Birth Wt. (kg)	200 Day (kg)	400 Day (kg)	600 Day (kg)	Mat. Cow (kg)	Milk (kg)
EBV	+3.9	+3.1	-6.3	+3.1	+54	+107	+129	+106	+23
Acc	49%	46%	84%	72%	70%	68%	67%	62%	56%

Scrot. Size (cm)	Days to Calv.	Carc Wt. (kg)	EMA (sqcm)	Rib Fat (mm)	Rump Fat (mm)	RBY %	IMF %	NFI-F (kg/day)	Doc
+2.4	-5.6	+78	+5.5	+0.2	+1.0	-0.3	+2.5	+0.12	-1
62%	37%	61%	59%	63%	60%	57%	59%	50%	54%

Traits Observed: GL,BWT,200WT(x2),400WT(x2),Scan(EMA,Rib,Rump,IMF),DOC,Genomics(CE,S-Step)

Selection Indexes

Angus Breeding	Domestic	Heavy Grain	Heavy Grass
+\$143	+\$133	+\$155	+\$137

Very exciting prospect. Paratrooper P15 is a heifer's calf from the same maternal line as Kruse Time K400. Paratrooper displays the same fleshing, thickness & breed type as his esteemed relative, with the bonus of a holeproof data set. P15 scanned #2 of his 50 bull group for EMA & IMF. A stud sire without doubt, we used Paratrooper quite heavily by AI in the Autumn. Video at millahmurrah.com

Purchaser:.....\$.....

13 MILLAH MURRAH HECTOR P38^{PV}

Born: 3/02/2018 Ident: NMMMP38 Regn: HBR
AMFU,CAFU,DDFU,NHFU



HYLINE RIGHT TIME 338[#]
K C F BENNETT PERFORMER[#]
K C F MISS 589 L182[#]
WDCH249 COONAMBLE HECTOR H249^{SV}
COONAMBLE Z3^{PV}
COONAMBLE E9^{PV}
BANGADANG LOWAN A61^{PV}
HIGHLANDER OF STERN AB[#]
MILLAH MURRAH HIGHLANDER G18^{SV}
MILLAH MURRAH PRUE D85^{PV}

NMML77 MILLAH MURRAH ELA L77^{PV}
TE MANIA EMPEROR E343^{PV}
MILLAH MURRAH ELA H66^{SV}
MILLAH MURRAH ELA E1^{PV}

Angus	August 2019 Angus Australia BREEDPLAN								
	Calv. Ease Direct	Calv. Ease Dtrs	Gest Lgth	Birth Wt. (kg)	200 Day (kg)	400 Day (kg)	600 Day (kg)	Mat. Cow (kg)	Milk (kg)
EBV	+1.0	-0.1	-6.8	+4.4	+46	+85	+112	+101	+13
Acc	52%	52%	83%	74%	71%	70%	70%	66%	60%

Scrot. Size (cm)	Days to Calv.	Carc Wt. (kg)	EMA (sqcm)	Rib Fat (mm)	Rump Fat (mm)	RBV %	IMF %	NFI-F (kg/day)	Doc
+2.4	-2.3	+63	+10.5	-0.3	+0.6	+1.9	+0.7	-0.47	+19
66%	44%	65%	64%	68%	65%	62%	63%	58%	58%

Traits Observed: GL,BWT,200WT(x2),400WT(x2),Scan(EMA,Rib,Rump,IMF),DOC,Genomics(CE,S-Step)

Selection Indexes			
Angus Breeding	Domestic	Heavy Grain	Heavy Grass
+\$116	+\$114	+\$110	+\$120

A superb bull to inspect, P38 is a beautifully balanced, genuine B muscle pattern animal, with plenty of softness and mid maturity. Like the previous bull, the thickness he exhibits right along the spine is just what the Angus breed needs right now. P38 is undoubtedly one of the best Hector sons we have produced and certainly stud sire standard.

Purchaser: \$.....

14 MILLAH MURRAH CAPITALIST P56^{PV}

Born: 8/02/2018 Ident: NMMMP56 Regn: HBR
AMFU,CAFU,DDFU,NHFU



S A V FINAL ANSWER 0035[#]
CONNEALY CAPITALIST 028[#]
PRIDES PITA OF CONANGA 8821[#]
USA17666102 LD CAPITALIST 316^{SV}
C A FUTURE DIRECTION 5321[#]
LD DIXIE ERICA 2053[#]
LD DIXIE ERICA OAR 0853[#]
TE MANIA BERKLEY B1^{PV}
TE MANIA EMPEROR E343^{PV}
TE MANIA LOWAN Z74^{PV}
NMMJ77 MILLAH MURRAH BRENDA J77^{SV}
MILLAH MURRAH WOODY W100[#]
MILLAH MURRAH BRENDA E221^{PV}
MILLAH MURRAH BRENDA Y74[#]

Angus	August 2019 Angus Australia BREEDPLAN								
	Calv. Ease Direct	Calv. Ease Dtrs	Gest Lgth	Birth Wt. (kg)	200 Day (kg)	400 Day (kg)	600 Day (kg)	Mat. Cow (kg)	Milk (kg)
EBV	+2.1	+0.7	-4.0	+5.1	+57	+100	+127	+112	+14
Acc	54%	48%	85%	74%	72%	70%	68%	65%	59%

Scrot. Size (cm)	Days to Calv.	Carc Wt. (kg)	EMA (sqcm)	Rib Fat (mm)	Rump Fat (mm)	RBV %	IMF %	NFI-F (kg/day)	Doc
+2.1	-2.9	+79	+9.1	+2.4	+0.9	+0.0	+2.1	+0.01	-9
66%	40%	63%	61%	65%	61%	58%	60%	52%	59%

Traits Observed: GL,BWT,200WT(x2),400WT(x2),DOC,Genomics(CE,S-Step)

Selection Indexes			
Angus Breeding	Domestic	Heavy Grain	Heavy Grass
+\$130	+\$122	+\$134	+\$129

1st LD Capitalist son to sell and a great example of what he can produce. Long, thick topped and stylish with excellent structure, P56 is a good one. Dam has had sons sell to \$16,000. Once again carrying data suggesting versatility for use on cows or heifers.

Purchaser: \$.....

Lot 14: Capitalist P56

Lot 13: Hector P38



15 MILLAH MURRAH CAPITALIST P20^{SV}

Born: 31/01/2018 Ident: NMMP20 Regn: HBR
AMFU,CAFU,DDFU,NHFU



S A V FINAL ANSWER 0035#
CONNEALY CAPITALIST 028#
PRIDES PITA OF CONANGA 8821#

USA17666102 LD CAPITALIST 316^{SV}

C A FUTURE DIRECTION 5321#
LD DIXIE ERICA 2053#
LD DIXIE ERICA OAR 0853#

MYTTY IN FOCUS#

FORRES BENAUD B1^{PV}

ST PAULS RUTH Y218^{PV}

NMMG37 MILLAH MURRAH BRENDA G37^{PV}

BT EQUATOR 395M#

MILLAH MURRAH BRENDA E53^{PV}

MILLAH MURRAH BRENDA B18^{PV}

August 2019 Angus Australia BREEDPLAN									
Calv. Ease Direct	Calv. Ease Drs	Gest Lgth	Birth Wt. (kg)	200 Day (kg)	400 Day (kg)	600 Day (kg)	Mat. Cow (kg)	Milk (kg)	
EBV	+3.8	+1.2	-4.6	+3.6	+48	+85	+107	+94	+15
Acc	54%	47%	73%	75%	73%	71%	69%	65%	59%
Scrot. Size (cm)	Days to Calv.	Carc Wt. (kg)	EMA (sqcm)	Rib Fat (mm)	Rump Fat (mm)	RBV %	IMF %	NFI-F (kg/day)	Doc
+0.5	-2.8	+69	+3.4	+0.0	-0.4	-0.6	+1.9	-0.05	-3
67%	37%	64%	62%	65%	62%	58%	61%	51%	61%

Trails Observed: BWT,200WT(x2),400WT(x2),Scan(EMA,Rib,Rump,IMF),DOC,Genomics(CE,S-Step)

Selection Indexes

Angus Breeding	Domestic	Heavy Grain	Heavy Grass
+\$101	+\$103	+\$100	+\$103

Long, thick and balanced. P20 comes from an outstanding cow on the Brenda Y33 line. G37 sold for \$20,000 to Redbank Angus in 2017. Her 6 sons have sold to average \$18,000. A maternal brother to P20 sells in the two year olds at Lot 29. Good young sire here to suit cows or helpers as required.

Purchaser: \$



Brenda G37: dam of Lot 15



Lot 17: Loch Up P80

16 MILLAH MURRAH KINGDOM P53^{PV}

Born: 8/02/2018 Ident: NMMP53 Regn: HBR
AMFU,CAFU,DDFU,NHFU



WAITARA VALLEY TEX#
HINGAIA 469#
HINGAIA 910#

NMMK35 MILLAH MURRAH KINGDOM K35^{PV}

BT RIGHT TIME 24J#
MILLAH MURRAH FLOWER G41^{PV}
MILLAH MURRAH FLOWER C15^{SV}

BASIN FRANCHISE P142#

EF COMPLEMENT 8088^{PV}

EF EVERELDA ENTENSE 6117#

NMML118 MILLAH MURRAH BRENDA L118^{SV}

CARRINGTON PARK TIME ON B7^{PV}

MILLAH MURRAH BRENDA G112^{PV}

MILLAH MURRAH BRENDA Y33#

August 2019 Angus Australia BREEDPLAN									
Calv. Ease Direct	Calv. Ease Drs	Gest Lgth	Birth Wt. (kg)	200 Day (kg)	400 Day (kg)	600 Day (kg)	Mat. Cow (kg)	Milk (kg)	
EBV	-4.5	-1.1	-2.5	+6.8	+53	+91	+119	+113	+11
Acc	56%	55%	84%	74%	72%	70%	70%	67%	61%
Scrot. Size (cm)	Days to Calv.	Carc Wt. (kg)	EMA (sqcm)	Rib Fat (mm)	Rump Fat (mm)	RBV %	IMF %	NFI-F (kg/day)	Doc
+1.1	-2.6	+68	+9.5	-1.6	-0.8	+1.3	+1.1	-0.41	+8
68%	45%	65%	64%	67%	64%	62%	63%	58%	59%

Trails Observed: GL,BWT,200WT(x2),400WT(x2),DOC,Genomics(CE,S-Step)

Selection Indexes

Angus Breeding	Domestic	Heavy Grain	Heavy Grass
+\$105	+\$103	+\$102	+\$107

Typical Kingdom length and thickness. Descended from the Brenda Y33 line.

Purchaser: \$

17 MILLAH MURRAH LOCH UP P80^{PV}

Born: 27/02/2018 Ident: NMMP80 Regn: APR
AMFU,CAFU,DDFU,NHFU



SITZ UPWARD 307R^{SV}
THOMAS UP RIVER 1614^{PV}
THOMAS CAROL 7595#

NMML133 MILLAH MURRAH LOCH UP L133^{PV}

TE MANIA EMPEROR E343^{PV}
MILLAH MURRAH BRENDA H49^{SV}
MILLAH MURRAH BRENDA E64^{PV}

MILLAH MURRAH EQUATOR D78^{PV}

MILLAH MURRAH DOC F159^{PV}

HAZELDEAN Y275^{SV}

NMMK154 MILLAH MURRAH K154^{SV}

MILLAH MURRAH C113^{PV}

MILLAH MURRAH F112^{SV}

MILLAH MURRAH B105#

August 2019 Angus Australia BREEDPLAN									
Calv. Ease Direct	Calv. Ease Drs	Gest Lgth	Birth Wt. (kg)	200 Day (kg)	400 Day (kg)	600 Day (kg)	Mat. Cow (kg)	Milk (kg)	
EBV	-2.7	+0.5	-7.7	+6.3	+59	+103	+133	+121	+18
Acc	50%	46%	84%	74%	72%	70%	70%	65%	56%
Scrot. Size (cm)	Days to Calv.	Carc Wt. (kg)	EMA (sqcm)	Rib Fat (mm)	Rump Fat (mm)	RBV %	IMF %	NFI-F (kg/day)	Doc
+2.8	-6.3	+80	+0.9	-0.6	-1.0	+0.5	+0.7	-0.68	+16
66%	37%	61%	61%	64%	62%	57%	60%	57%	59%

Trails Observed: GL,BWT,200WT(x2),400WT(x2),DOC,Genomics(CE,S-Step)

Selection Indexes

Angus Breeding	Domestic	Heavy Grain	Heavy Grass
+\$113	+\$109	+\$112	+\$113

Cracking youngster. P80 oozes style and presence, stamped with Loch Up's tremendous capacity through the mid section.

Purchaser: \$

18 MILLAH MURRAH HECTOR P32^{PV}

Born: 3/02/2018 Ident: NMMP32 Regn: HBR
AMFU,CAFU,DDFU,NHFU



HYLINE RIGHT TIME 338[#]
K C F BENNETT PERFORMER[#]
K C F MISS 589 L182[#]

WDCH249 COONAMBLE HECTOR H249^{SV}

COONAMBLE Z3^{PV}
COONAMBLE E9^{PV}
BANGADANG LOWAN A61^{PV}
TE MANIA BERKLEY B1^{PV}
TE MANIA EMPEROR E343^{PV}
TE MANIA LOWAN Z74^{PV}

NMMH150 MILLAH MURRAH ABIGAIL H150^{SV}

MILLAH MURRAH A192^{SV}
MILLAH MURRAH ABIGAIL D9^{SV}
MILLAH MURRAH ABIGAIL B9^{PV}

August 2019 Angus Australia BREEDPLAN									
	Calv. Ease Direct	Calv. Ease Dtrs	Gest Lgth	Birth Wt. (kg)	200 Day (kg)	400 Day (kg)	600 Day (kg)	Mat. Cow (kg)	Milk (kg)
EBV	+2.2	+1.5	-6.9	+4.9	+45	+86	+110	+94	+7
Acc	55%	53%	85%	74%	72%	70%	71%	67%	63%
Scrot. Size (cm)	Days to Calv.	Carc Wt. (kg)	EMA (sqcm)	Rib Fat (mm)	Rump Fat (mm)	RBV %	IMF %	NFI-F (kg/day)	Doc
+0.5	-2.9	+60	+6.7	+1.4	+1.0	+0.4	+1.7	-0.27	+20
68%	46%	66%	65%	67%	65%	62%	64%	58%	58%

Trails Observed: GL,BWT,200WT(x2),400WT(x2),Scan(EMA,Rib,Rump,IMF),DOC,Genomics(CE,S-Step)

Selection Indexes			
Angus Breeding	Domestic	Heavy Grain	Heavy Grass
+\$120	+\$116	+\$123	+\$120

The Hector progeny have made a big impression on our herd. This one is from a strong performing dam, descended from the Abigail S104 line. H150's sons have averaged \$15,000 including a Complement son, at Michael Wallace's Spring Hill Stud in WA. Her only daughter, by Kingdom, was used in our donor programme in Autumn.

Purchaser: \$.....

19 MILLAH MURRAH NERO N189^{PV}

Born: 14/07/2017 Ident: NMMN189 Regn: APR
AMFU,CAFU,DDFU,NHFU



BASIN FRANCHISE P142[#]
EF COMPLEMENT 8088^{PV}
EF EVERELDA ENTENSE 6117[#]

NMML119 MILLAH MURRAH LINCOLN L119^{PV}

TE MANIA EMPEROR E343^{PV}
MILLAH MURRAH PRUE H62^{SV}
MILLAH MURRAH PRUE E107^{PV}

SILVEIRAS CONVERSION 8064[#]
MILLAH MURRAH CONVERSION J243^{SV}
MILLAH MURRAH ABIGAIL G158^{PV}

NMML318 MILLAH MURRAH L318^{SV}

MILLAH MURRAH EQUITY E123^{PV}
MILLAH MURRAH G184^{PV}
MILLAH MURRAH E149^{PV}

August 2019 Angus Australia BREEDPLAN									
	Calv. Ease Direct	Calv. Ease Dtrs	Gest Lgth	Birth Wt. (kg)	200 Day (kg)	400 Day (kg)	600 Day (kg)	Mat. Cow (kg)	Milk (kg)
EBV	-2.3	+0.4	-7.4	+6.4	+55	+93	+120	+105	+16
Acc	47%	46%	84%	73%	68%	66%	71%	63%	52%
Scrot. Size (cm)	Days to Calv.	Carc Wt. (kg)	EMA (sqcm)	Rib Fat (mm)	Rump Fat (mm)	RBV %	IMF %	NFI-F (kg/day)	Doc
+3.5	-8.4	+66	+2.6	+1.4	+2.6	+0.0	+1.1	+0.29	+10
70%	35%	58%	57%	61%	58%	53%	56%	48%	47%

Trails Observed: GL,CE,BWT,200WT,600WT,SC,Scan(EMA,Rib,Rump,IMF),DOC,Genomics(CE,S-Step)

Selection Indexes			
Angus Breeding	Domestic	Heavy Grain	Heavy Grass
+\$121	+\$111	+\$119	+\$119

Powerful bull to lead off the two year olds. Lincoln is transmitting terrific weight for age and carcass shape to his progeny. This fellow is no exception. He will be well past 900kg at sale time. Heifer's calf.

Purchaser: \$.....

20 MILLAH MURRAH KINGDOM N271^{PV}

Born: 3/08/2017 Ident: NMMN271 Regn: HBR
AMFU,CAFU,DDFU,NHFU



WAITARA VALLEY TEX[#]
HINGAIA 469[#]
HINGAIA 910[#]

NMMK35 MILLAH MURRAH KINGDOM K35^{PV}

BT RIGHT TIME 24J[#]
MILLAH MURRAH FLOWER G41^{PV}
MILLAH MURRAH FLOWER C15^{SV}
TE MANIA BERKLEY B1^{PV}
TE MANIA EMPEROR E343^{PV}
TE MANIA LOWAN Z74^{PV}

NMMJ10 MILLAH MURRAH FLOWER J10^{SV}

HIGHLANDER OF STERN AB[#]
MILLAH MURRAH FLOWER G24^{PV}
MILLAH MURRAH FLOWER E60^{PV}

August 2019 Angus Australia BREEDPLAN									
	Calv. Ease Direct	Calv. Ease Dtrs	Gest Lgth	Birth Wt. (kg)	200 Day (kg)	400 Day (kg)	600 Day (kg)	Mat. Cow (kg)	Milk (kg)
EBV	-4.7	-1.2	-5.7	+5.9	+45	+79	+105	+115	+9
Acc	57%	56%	85%	75%	72%	71%	73%	66%	62%
Scrot. Size (cm)	Days to Calv.	Carc Wt. (kg)	EMA (sqcm)	Rib Fat (mm)	Rump Fat (mm)	RBV %	IMF %	NFI-F (kg/day)	Doc
+1.0	-7.9	+49	+8.6	+3.0	+3.5	-0.1	+0.3	+0.15	+4
73%	48%	66%	65%	68%	65%	63%	64%	59%	59%

Trails Observed: GL,CE,BWT,200WT,600WT,SC,Scan(EMA,Rib,Rump,IMF),DOC,Genomics(CE,S-Step)

Selection Indexes			
Angus Breeding	Domestic	Heavy Grain	Heavy Grass
+\$100	+\$93	+\$89	+\$103

Masses of fleshing, with typical Kingdom length and thickness.

Purchaser: \$.....



Lot 20: Kingdom N271



Lot 19: Lincoln L119

21 MILLAH MURRAH HECTOR N338^{PV}

Born: 29/08/2017 Ident: NMMN338 Regn: HBR
AMFU,CAFU,DDFU,NHFU



HYLINE RIGHT TIME 338[#]
K C F BENNETT PERFORMER[#]
K C F MISS 589 L182[#]

WDCH249 COONAMBLE HECTOR H249^{SV}

COONAMBLE Z3^{PV}
COONAMBLE E9^{PV}
BANGADANG LOWAN A61^{PV}
TE MANIA BERKLEY B1^{PV}
TE MANIA EMPEROR E343^{PV}
TE MANIA LOWAN Z74^{PV}

NMMH52 MILLAH MURRAH ABIGAIL H52^{PV}

MILLAH MURRAH WOODY W100[#]
MILLAH MURRAH ABIGAIL A65^{PV}
MILLAH MURRAH ABIGAIL Y128[#]

August 2019 Angus Australia BREEDPLAN									
	Calv. Ease Direct	Calv. Ease Dtrs	Gest Lgth	Birth Wt. (kg)	200 Day (kg)	400 Day (kg)	600 Day (kg)	Mat. Cow (kg)	Milk (kg)
EBV	-2.8	-0.8	-3.9	+6.0	+40	+74	+96	+96	+8
Acc	56%	54%	85%	74%	72%	71%	71%	66%	62%
Scrot. Size (cm)	Days to Calv.	Carc Wt. (kg)	EMA (sqcm)	Rib Fat (mm)	Rump Fat (mm)	RBV %	IMF %	NFI-F (kg/day)	Doc
+0.3	-5.0	+56	+4.2	+2.4	+3.0	-1.5	+2.5	-0.48	+20
68%	46%	66%	65%	68%	65%	63%	64%	59%	59%

Traits Observed: GL,CE,BWT,200WT,DOC,Genomics(CE,S-Step)

Selection Indexes

Angus Breeding	Domestic	Heavy Grain	Heavy Grass
+\$98	+\$91	+\$102	+\$95

Super stylish bull descended from the grand matriarch Abigail S104. Sons of the dam have sold to \$14,000, with daughters working in three studs across Australia. H52's next calf is the standout animal featured in the yearling bull section at Lot 37.



Abigail H52 pictured at 2 years. Dam of Lots 21 & 37.



Lot 23: Hector N332

Purchaser: \$.....

22 MILLAH MURRAH LOCH UP N342^{PV}

Born: 30/08/2017 Ident: NMMN342 Regn: HBR
AMFU,CAFU,DDFU,NHFU



SITZ UPWARD 307R^{SV}
THOMAS UP RIVER 1614^{PV}
THOMAS CAROL 7595[#]

NMML133 MILLAH MURRAH LOCH UP L133^{PV}

TE MANIA EMPEROR E343^{PV}
MILLAH MURRAH BRENDA H49^{SV}
MILLAH MURRAH BRENDA E64^{PV}
BASIN FRANCHISE P142[#]
EF COMPLEMENT 8088^{PV}
EF EVERELDA ENTENSE 6117[#]

NMMK195 MILLAH MURRAH PRUE K195^{SV}

CARRINGTON PARK TIME ON B7^{PV}
MILLAH MURRAH PRUE F207^{PV}
MILLAH MURRAH PRUE Y28[#]

August 2019 Angus Australia BREEDPLAN									
	Calv. Ease Direct	Calv. Ease Dtrs	Gest Lgth	Birth Wt. (kg)	200 Day (kg)	400 Day (kg)	600 Day (kg)	Mat. Cow (kg)	Milk (kg)
EBV	+0.8	+1.3	-1.8	+3.6	+50	+85	+111	+85	+20
Acc	52%	48%	85%	74%	71%	70%	73%	66%	56%
Scrot. Size (cm)	Days to Calv.	Carc Wt. (kg)	EMA (sqcm)	Rib Fat (mm)	Rump Fat (mm)	RBV %	IMF %	NFI-F (kg/day)	Doc
+1.8	-5.8	+63	+6.7	-0.4	-0.6	+0.3	+2.1	+0.14	-2
73%	38%	61%	61%	64%	62%	57%	60%	58%	59%

Traits Observed: GL,CE,BWT,200WT,600WT,SC,Scan(EMA,Rib,Rump,IMF),DOC,Genomics(CE,S-Step)

Selection Indexes

Angus Breeding	Domestic	Heavy Grain	Heavy Grass
+\$122	+\$113	+\$127	+\$118

Well balanced bull in the flesh and on paper, N342 caught the eye from an early age. His dam's first son fetched \$22,000 as a yearling!

Purchaser: \$.....

23 MILLAH MURRAH HECTOR N332^{SV}

Born: 27/08/2017 Ident: NMMN332 Regn: HBR
AMFU,CAFU,DDFU,NHFU



HYLINE RIGHT TIME 338[#]
K C F BENNETT PERFORMER[#]
K C F MISS 589 L182[#]

WDCH249 COONAMBLE HECTOR H249^{SV}

COONAMBLE Z3^{PV}
COONAMBLE E9^{PV}
BANGADANG LOWAN A61^{PV}
LEACHMAN RIGHT TIME^{SV}
BT RIGHT TIME 24J[#]
SITZ EVERELDA ENTENSE 1905[#]

NMMG41 MILLAH MURRAH FLOWER G41^{PV}

BON VIEW NEW DESIGN 1407[#]
MILLAH MURRAH FLOWER C15^{SV}
MILLAH MURRAH FLOWER A81^{PV}

August 2019 Angus Australia BREEDPLAN									
	Calv. Ease Direct	Calv. Ease Dtrs	Gest Lgth	Birth Wt. (kg)	200 Day (kg)	400 Day (kg)	600 Day (kg)	Mat. Cow (kg)	Milk (kg)
EBV	-1.9	-1.1	-7.6	+8.3	+56	+93	+129	+132	+5
Acc	59%	56%	75%	76%	74%	73%	74%	68%	64%
Scrot. Size (cm)	Days to Calv.	Carc Wt. (kg)	EMA (sqcm)	Rib Fat (mm)	Rump Fat (mm)	RBV %	IMF %	NFI-F (kg/day)	Doc
-0.3	-5.1	+69	+6.7	+0.8	+1.0	+1.1	+0.4	-0.90	+21
74%	49%	68%	68%	70%	67%	65%	66%	61%	62%

Traits Observed: BWT,200WT,600WT,SC,Scan(EMA,Rib,Rump,IMF),DOC,Genomics(CE,S-Step)

Selection Indexes

Angus Breeding	Domestic	Heavy Grain	Heavy Grass
+\$120	+\$108	+\$116	+\$121

Maternal brother to Kingdom. Kingdom's \$150,000 record price tag aside, G41 has had seven other sons to average \$20,500 including ABS semen sires, Marlon Brando and Navigator. It's a staggering record. She has delivered another standout here with Hector, as well as two cracking yearling sons at Lots 40 & 41.

Purchaser: \$.....

24 MILLAH MURRAH HALLMARK N275^{SV}

Born: 3/08/2017 Ident: NMMN275 Regn: HBR
AMFU,CAFU,DDFU,NHFU



TE MANIA BERKLEY B1^{PV}
TE MANIA EMPEROR E343^{PV}
TE MANIA LOWAN Z74^{PV}
QQFH147 ASCOT HALLMARK H147^{PV}
MILLAH MURRAH DIGBY D108^{PV}
MILLAH MURRAH BRENDA F123^{PV}
MILLAH MURRAH BRENDA D113^{PV}
BT RIGHT TIME 24J#
CARRINGTON PARK TIME ON B7^{PV}
CARRINGTON PARK EMPRESS Z30^{PV}
NMMG242 MILLAH MURRAH ECLIPSE G242^{PV}
BOOROOMOOKA THEO T030^{SV}
HAZELDEAN Y427^{SV}
HAZELDEAN W109#



Lot 24: Hallmark N275

August 2019 Angus Australia BREEDPLAN									
	Calv. Ease Direct	Calv. Ease Dtrs	Gest Lgth	Birth Wt. (kg)	200 Day (kg)	400 Day (kg)	600 Day (kg)	Mat. Cow (kg)	Milk (kg)
EBV	-1.9	-1.3	-3.0	+4.1	+41	+74	+103	+82	+11
Acc	54%	51%	85%	75%	72%	70%	73%	69%	62%
Scrot. Size (cm)	Days to Calv.	Carc Wt. (kg)	EMA (sqcm)	Rib Fat (mm)	Rump Fat (mm)	RBV %	IMF %	NFI-F (kg/day)	Doc
+1.7	-4.6	+57	+0.1	+1.4	-0.9	-0.7	+1.8	+0.33	-16
73%	44%	65%	65%	68%	65%	62%	64%	57%	59%

Traits Observed: GL,CE,BWT,200WT,600WT,SC,Scan(EMA,Rib,Rump,IMF),DOC,Genomics(CE,S-Step)

Selection Indexes			
Angus Breeding	Domestic	Heavy Grain	Heavy Grass
+\$92	+\$88	+\$93	+\$92

Long, strong topped bull.



Lot 26: Kingdom N263

Purchaser: \$.....

25 MILLAH MURRAH LOCH UP N380^{PV}

Born: 22/08/2017 Ident: NMMN380 Regn: HBR
AMFU,CAFU,DDFU,NHFU



SITZ UPWARD 307R^{SV}
THOMAS UP RIVER 1614^{PV}
THOMAS CAROL 7595#
NMML133 MILLAH MURRAH LOCH UP L133^{PV}
TE MANIA EMPEROR E343^{PV}
MILLAH MURRAH BRENDA H49^{SV}
MILLAH MURRAH BRENDA E64^{PV}
BASIN FRANCHISE P142#
EF COMPLEMENT 8088^{PV}
EF EVERELDA ENTENSE 6117#
NMMK163 MILLAH MURRAH SUSAN K163^{PV}
MILLAH MURRAH EQUATOR D78^{PV}
MILLAH MURRAH SUSAN H265^{PV}
HAZELDEAN Y275^{SV}

August 2019 Angus Australia BREEDPLAN									
	Calv. Ease Direct	Calv. Ease Dtrs	Gest Lgth	Birth Wt. (kg)	200 Day (kg)	400 Day (kg)	600 Day (kg)	Mat. Cow (kg)	Milk (kg)
EBV	+1.7	+2.2	-7.5	+4.1	+57	+103	+144	+123	+19
Acc	52%	48%	85%	75%	72%	70%	73%	66%	56%
Scrot. Size (cm)	Days to Calv.	Carc Wt. (kg)	EMA (sqcm)	Rib Fat (mm)	Rump Fat (mm)	RBV %	IMF %	NFI-F (kg/day)	Doc
+3.1	-4.8	+78	-0.8	+0.0	-0.4	+0.0	+1.0	-0.28	+20
73%	39%	62%	62%	65%	62%	58%	61%	58%	58%

Traits Observed: GL,CE,BWT,200WT,600WT,SC,Scan(EMA,Rib,Rump,IMF),DOC,Genomics(CE,S-Step)

Selection Indexes			
Angus Breeding	Domestic	Heavy Grain	Heavy Grass
+\$128	+\$114	+\$130	+\$127

Massive birth to growth spread. N380 fits the dual purpose heifer or cow mating role. Dam's 1st son fetched \$14,000 last year to the Sargood family at Tambo.

Purchaser: \$.....

26 MILLAH MURRAH KINGDOM N263^{PV}

Born: 1/08/2017 Ident: NMMN263 Regn: HBR
AMFU,CAFU,DDFU,NHFU



WAITARA VALLEY TEX#
HINGAIA 469#
HINGAIA 910#
NMMK35 MILLAH MURRAH KINGDOM K35^{PV}
BT RIGHT TIME 24J#
MILLAH MURRAH FLOWER G41^{PV}
MILLAH MURRAH FLOWER C15^{SV}
BASIN FRANCHISE P142#
EF COMPLEMENT 8088^{PV}
EF EVERELDA ENTENSE 6117#
NMMK162 MILLAH MURRAH ABIGAIL K162^{PV}
TE MANIA EMPEROR E343^{PV}
MILLAH MURRAH ABIGAIL H224^{PV}
MILLAH MURRAH ABIGAIL B10^{PV}

August 2019 Angus Australia BREEDPLAN									
	Calv. Ease Direct	Calv. Ease Dtrs	Gest Lgth	Birth Wt. (kg)	200 Day (kg)	400 Day (kg)	600 Day (kg)	Mat. Cow (kg)	Milk (kg)
EBV	-4.1	-0.6	-6.5	+7.9	+58	+105	+145	+150	+15
Acc	56%	56%	85%	75%	72%	70%	73%	68%	61%
Scrot. Size (cm)	Days to Calv.	Carc Wt. (kg)	EMA (sqcm)	Rib Fat (mm)	Rump Fat (mm)	RBV %	IMF %	NFI-F (kg/day)	Doc
+0.1	-4.7	+72	+8.7	-0.4	-0.1	+0.4	+1.2	-0.41	+16
72%	45%	65%	65%	67%	64%	62%	63%	58%	59%

Traits Observed: GL,CE,BWT,200WT,600WT,SC,Scan(EMA,Rib,Rump,IMF),DOC,Genomics(CE,S-Step)

Selection Indexes			
Angus Breeding	Domestic	Heavy Grain	Heavy Grass
+\$126	+\$108	+\$132	+\$124

Kingdom x Complement x Emperor x Crusader of Stern; it's a brilliant pedigree. Powerful bull displaying ample fleshing and depth.

Purchaser: \$.....



Prue J232, paternal grand dam of Lot 28



Lot 27: Klooney N322

28 MILLAH MURRAH LORD N354^{PV}

Born: 7/09/2017 Ident: NMMN354 Regn: APR
AMFU,CAFU,DDFU,NHFU



TE MANIA EMPEROR E343^{PV}
MILLAH MURRAH EMPEROR H125^{SV}
MILLAH MURRAH FLOWER F11^{PV}
NMML188 MILLAH MURRAH LORD L188^{PV}
CARABAR DOCKLANDS D62^{PV}
MILLAH MURRAH PRUE J232^{SV}
MILLAH MURRAH PRUE F207^{PV}
BASIN FRANCHISE P142[#]
EF COMPLEMENT 8088^{PV}
EF EVERELDA ENTENSE 6117[#]
NMML160 MILLAH MURRAH L160^{PV}
MILLAH MURRAH DOC F159^{PV}
MILLAH MURRAH J298^{SV}
MILLAH MURRAH D120[#]

August 2019 Angus Australia BREEDPLAN									
	Calv. Ease Direct	Calv. Ease Dtrs	Gest Lgth	Birth Wt. (kg)	200 Day (kg)	400 Day (kg)	600 Day (kg)	Mat. Cow (kg)	Milk (kg)
EBV	+2.4	+2.0	-4.1	+2.7	+42	+72	+93	+71	+16
Acc	44%	45%	71%	70%	66%	63%	68%	61%	52%
Scrot. Size (cm)	Days to Calv.	Carc Wt. (kg)	EMA (sqcm)	Rib Fat (mm)	Rump Fat (mm)	RBV %	IMF %	NFI-F (kg/day)	Doc
+2.2	-7.1	+61	+4.3	+0.2	-0.4	-0.2	+1.7	+0.06	-8
68%	34%	56%	55%	59%	56%	51%	54%	47%	46%

Traits Observed: BWT,200WT,600WT,SC,Scan(EMA,Rib,Rump,IMF),DOC,Genomics(CE,S-Step)

Selection Indexes			
Angus Breeding	Domestic	Heavy Grain	Heavy Grass
+\$107	+\$103	+\$107	+\$105

Thick and deep with lovely skin. Heifer's calf and suitable for use on heifers or cows as required.

Purchaser: \$

29 MILLAH MURRAH AVIATOR N374^{SV}

Born: 26/09/2017 Ident: NMMN374 Regn: HBR
AMFU,CAFU,DDFU,NHFU



SITZ UPWARD 307R^{SV}
KOUPLS B&B IDENTITY[#]
B&B ERICA 605[#]
USA17264774 MUSGRAVE AVIATOR^{SV}
S A V FINAL ANSWER 0035[#]
MCATL FOREVER LADY 1429-138[#]
ALC FOREVER LADY R02S[#]
MYTTY IN FOCUS[#]
FORRES BENAUD B1^{PV}
ST PAULS RUTH Y218^{PV}
NMMG37 MILLAH MURRAH BRENDA G37^{PV}
BT EQUATOR 395M[#]
MILLAH MURRAH BRENDA E53^{PV}
MILLAH MURRAH BRENDA B18^{PV}

August 2019 Angus Australia BREEDPLAN									
	Calv. Ease Direct	Calv. Ease Dtrs	Gest Lgth	Birth Wt. (kg)	200 Day (kg)	400 Day (kg)	600 Day (kg)	Mat. Cow (kg)	Milk (kg)
EBV	+5.1	+2.3	-5.5	-1.0	+37	+67	+81	+44	+20
Acc	48%	45%	70%	73%	72%	70%	71%	65%	59%
Scrot. Size (cm)	Days to Calv.	Carc Wt. (kg)	EMA (sqcm)	Rib Fat (mm)	Rump Fat (mm)	RBV %	IMF %	NFI-F (kg/day)	Doc
-0.3	-2.4	+49	+5.9	+0.2	-0.6	+0.4	+1.3	+0.02	-10
71%	37%	63%	62%	65%	61%	58%	60%	51%	55%

Traits Observed: BWT,200WT,600WT,SC,Scan(EMA,Rib,Rump,IMF),DOC,Genomics(CE,S-Step)

Selection Indexes			
Angus Breeding	Domestic	Heavy Grain	Heavy Grass
+\$87	+\$99	+\$74	+\$94

Elite pedigree. Aviator is one of the most admired bulls by Australian visitors to the US in recent times. Only 30 straws of semen came out here. N374 comes from an outstanding cow on the Brenda Y33 line. G37 sold for \$20,000 to Redbank Angus in 2017, with 6 sons at \$18,000. N374 is off the charts for calving ease, with more power than the numbers suggest. Maternal brother at Lot 15.

Purchaser: \$

27 MILLAH MURRAH KLOONEY N322^{PV}

Born: 24/08/2017 Ident: NMMN322 Regn: HBR
AMFU,CAFU,DDFU,NHFU



B/R NEW DESIGN 036[#]
BOOROOMOOKA THEO T030^{SV}
BOOROOMOOKA QUAIN T Q34+95[#]
NMMK42 MILLAH MURRAH KLOONEY K42^{PV}
TE MANIA EMPEROR E343^{PV}
MILLAH MURRAH PRUE H4^{SV}
MILLAH MURRAH PRUE F12^{PV}
SUMMITCREST COMPLETE 1P55[#]
KM BROKEN BOW 002^{PV}
SUMMITCREST PRINCESS 0P12[#]
NMMJ262 MILLAH MURRAH BEAC J262^{SV}
MILLAH MURRAH NEUTRON E78^{PV}
MILLAH MURRAH BEAC G254^{PV}
HAZELDEAN Y277^{SV}

August 2019 Angus Australia BREEDPLAN									
	Calv. Ease Direct	Calv. Ease Dtrs	Gest Lgth	Birth Wt. (kg)	200 Day (kg)	400 Day (kg)	600 Day (kg)	Mat. Cow (kg)	Milk (kg)
EBV	+1.5	+1.8	-5.9	+6.8	+56	+99	+126	+112	+15
Acc	57%	55%	85%	75%	72%	71%	74%	68%	60%
Scrot. Size (cm)	Days to Calv.	Carc Wt. (kg)	EMA (sqcm)	Rib Fat (mm)	Rump Fat (mm)	RBV %	IMF %	NFI-F (kg/day)	Doc
+2.3	-7.3	+68	+5.4	-1.2	-1.6	+0.8	+2.2	-0.21	+9
73%	45%	66%	64%	68%	65%	60%	64%	57%	59%

Traits Observed: GL,CE,BWT,200WT,600WT,SC,Scan(EMA,Rib,Rump,IMF),DOC,Genomics(CE,S-Step)

Selection Indexes			
Angus Breeding	Domestic	Heavy Grain	Heavy Grass
+\$141	+\$127	+\$158	+\$132

Plenty of stretch and depth. Dam's only other son fetched \$14,000.

Purchaser: \$

30 MILLAH MURRAH AVIATOR N375^{PV}

Born: 28/09/2017 Ident: NMMN375 Regn: HBR
AMFU,CAFU,DDFU,NHFU



SITZ UPWARD 307R^{SV}
KROUPALS B&B IDENTITY#
B&B ERICA 605#
USA17264774 MUSGRAVE AVIATOR^{SV}
S A V FINAL ANSWER 0035#
MCATL FOREVER LADY 1429-138#
ALC FOREVER LADY R02S#
B/R NEW DESIGN 036#
YTHANBRAE HENRY VIII U8^{SV}
G A R MAX 678#

NMMH113 MILLAH MURRAH PRUE H113^{PV}
CRUSADER OF STERN AB#
MILLAH MURRAH PRUE C48^{SV}
MILLAH MURRAH PRUE Y68#

August 2019 Angus Australia BREEDPLAN									
	Calv. Ease Direct	Calv. Ease Dtrs	Gest Lgth	Birth Wt. (kg)	200 Day (kg)	400 Day (kg)	600 Day (kg)	Mat. Cow (kg)	Milk (kg)
EBV	+1.8	+1.0	-2.1	+3.2	+46	+84	+102	+77	+19
Acc	51%	47%	70%	73%	72%	70%	72%	66%	61%

Scrot. Size (cm)	Days to Calv.	Carc Wt. (kg)	EMA (sqcm)	Rib Fat (mm)	Rump Fat (mm)	RBV %	IMF %	NFI-F (kg/day)	Doc
+1.4	-3.1	+66	+9.6	-1.1	-2.4	+1.8	+1.7	-0.18	-2
72%	40%	64%	63%	65%	62%	59%	61%	52%	56%

Traits Observed: BWT,200WT,600WT,SC,Scan(EMA,Rib,Rump,IMF),DOC,Genomics(CE,S-Step)

Selection Indexes			
Angus Breeding	Domestic	Heavy Grain	Heavy Grass
+\$115	+\$118	+\$117	+\$114

Maternal pedigrees don't come better than this. H113 is the only cow in Australian Angus history with three sons to fetch \$40,000 or more. Her full sister is the \$54,000 highest selling mature female in the breed. Strong outcross genetic option with plenty of eye appeal.

Purchaser: \$.....



Prue H113: dam of Lot 30

Lot 31: Kruse Time N315



31 MILLAH MURRAH KRUSE TIME N315^{PV}

Born: 18/08/2017 Ident: NMMN315 Regn: HBR
AMFU,CAFU,DDFU,NHFU



LEACHMAN RIGHT TIME^{SV}
BT RIGHT TIME 24J#
SITZ EVERELDA ENTENSE 1905#
NMMK400 MILLAH MURRAH KRUSE TIME K400^{PV}
CRUSADER OF STERN AB#
MILLAH MURRAH ELA A204#
MILLAH MURRAH ELA Y46#
MILLAH MURRAH NEUTRON E78^{PV}
MILLAH MURRAH HERCULES H250^{PV}
MILLAH MURRAH FLOWER E120^{PV}
NMML244 MILLAH MURRAH FLOWER L244^{SV}
ARDROSSAN APOLLO D324^{PV}
MILLAH MURRAH FLOWER G236^{SV}
MILLAH MURRAH FLOWER A50^{PV}

August 2019 Angus Australia BREEDPLAN									
	Calv. Ease Direct	Calv. Ease Dtrs	Gest Lgth	Birth Wt. (kg)	200 Day (kg)	400 Day (kg)	600 Day (kg)	Mat. Cow (kg)	Milk (kg)
EBV	-1.8	-0.3	-2.0	+3.6	+38	+73	+95	+78	+15
Acc	47%	47%	84%	73%	69%	67%	70%	63%	55%

Scrot. Size (cm)	Days to Calv.	Carc Wt. (kg)	EMA (sqcm)	Rib Fat (mm)	Rump Fat (mm)	RBV %	IMF %	NFI-F (kg/day)	Doc
+1.3	-2.1	+50	+7.0	-0.9	-0.9	+1.1	+0.9	+0.05	-2
70%	40%	60%	59%	63%	60%	56%	58%	51%	54%

Traits Observed: GL,CE,BWT,200WT,600WT,SC,Scan(EMA,Rib,Rump,IMF),DOC,Genomics(CE,S-Step)

Selection Indexes			
Angus Breeding	Domestic	Heavy Grain	Heavy Grass
+\$88	+\$94	+\$79	+\$93

Only Kruse Time son in the sale. There will be more next year. We are always happy to compromise on numbers in pursuit of the fleshing, structure and style of a bull like K400. N315 displays the phenotype the industry needs from Angus. His daughters will be superb. Heifer's calf.

Purchaser: \$.....

32 MILLAH MURRAH CONVERSION N373^{SV}

Born: 25/09/2017 Ident: NMMN373 Regn: HBR
AMFU,CAFU,DDFU,NHFU



SILVEIRAS CONVERSION 8064[#]
MILLAH MURRAH JACKPOT J137^{PV}
MILLAH MURRAH PRUE E16^{PV}
NMML218 MILLAH MURRAH CONVERSION L218^{SV}
THE MEADOWS 469 DESIGNER A64^{PV}
MILLAH MURRAH BRENDA E130^{PV}
MILLAH MURRAH BRENDA A48^{PV}
WAITARA VALLEY TEX[#]
HINGAIA 469[#]
HINGAIA 910[#]
NMMK6 MILLAH MURRAH ABIGAIL K6^{SV}
MILLAH MURRAH EQUATOR D78^{PV}
MILLAH MURRAH ABIGAIL G2^{PV}
MILLAH MURRAH ABIGAIL A65^{PV}



Lot 32: Conversion N373

August 2019 Angus Australia BREEDPLAN									
	Calv. Ease Direct	Calv. Ease Dtrs	Gest Lgth	Birth Wt. (kg)	200 Day (kg)	400 Day (kg)	600 Day (kg)	Mat. Cow (kg)	Milk (kg)
EBV	-1.5	+0.0	-3.3	+4.3	+35	+68	+95	+81	+20
Acc	45%	46%	84%	69%	66%	64%	64%	60%	54%
Scrot. Size (cm)	Days to Calv.	Carc Wt. (kg)	EMA (sqcm)	Rib Fat (mm)	Rump Fat (mm)	RBV %	IMF %	NFI-F (kg/day)	Doc
+1.3	-6.6	+49	+6.1	+0.5	+0.9	+0.9	+0.1	-0.56	+6
62%	40%	59%	58%	62%	59%	55%	57%	51%	46%

Trails Observed: GL,BWT,200WT,600WT,SC,Scan(EMA,Rib,Rump,IMF),DOC,Genomics(CE,S-Step)

Selection Indexes			
Angus Breeding	Domestic	Heavy Grain	Heavy Grass
+\$95	+\$92	+\$83	+\$99

Another beautifully put together young sire, with a pedigree steeped in maternal strength. Three doses of Hingaia 469 and Woody W100 in the background. Dam's only other son sold for \$14,000 in 2017.



Flower G43: Dam of Lot 35

Purchaser: \$

Purchaser: \$

33 MILLAH MURRAH LOCH UP N296^{PV}

Born: 8/08/2017 Ident: NMMN296 Regn: HBR
AMFU,CAFU,DDFU,NHFU



SITZ UPWARD 307R^{SV}
THOMAS UP RIVER 1614^{PV}
THOMAS CAROL 7595[#]
NMML133 MILLAH MURRAH LOCH UP L133^{PV}
TE MANIA EMPEROR E343^{PV}
MILLAH MURRAH BRENDA H49^{SV}
MILLAH MURRAH BRENDA E64^{PV}
SCHURRTOP REALITY X723[#]
MATAURI REALITY 839[#]
MATAURI 06663[#]
NMML166 MILLAH MURRAH RADO L166^{PV}
SILVEIRAS CONVERSION 8064[#]
MILLAH MURRAH RADO J200^{SV}
MILLAH MURRAH RADO G265^{PV}

August 2019 Angus Australia BREEDPLAN									
	Calv. Ease Direct	Calv. Ease Dtrs	Gest Lgth	Birth Wt. (kg)	200 Day (kg)	400 Day (kg)	600 Day (kg)	Mat. Cow (kg)	Milk (kg)
EBV	+2.0	+2.1	-8.6	+1.2	+38	+67	+75	+58	+19
Acc	51%	48%	85%	74%	71%	69%	72%	64%	55%
Scrot. Size (cm)	Days to Calv.	Carc Wt. (kg)	EMA (sqcm)	Rib Fat (mm)	Rump Fat (mm)	RBV %	IMF %	NFI-F (kg/day)	Doc
+1.8	-9.2	+47	+4.7	+3.0	+2.0	-0.9	+1.8	+0.27	+12
72%	39%	60%	61%	63%	61%	57%	60%	57%	58%

Trails Observed: GL,CE,BWT,200WT,600WT,SC,Scan(EMA,Rib,Rump,IMF),DOC,Genomics(CE,S-Step)

Selection Indexes			
Angus Breeding	Domestic	Heavy Grain	Heavy Grass
+\$100	+\$103	+\$95	+\$99

Bomb proof heifer mating option with plenty of shape and weight for age. Heifer's calf.

34 MILLAH MURRAH RIGHT TIME N349^{PV}

Born: 3/09/2017 Ident: NMMN349 Regn: HBR
AMFU,CAFU,DDFU,NHFU



LEACHMAN RIGHT TIME^{SV}
BT RIGHT TIME 24J[#]
SITZ EVERELDA ENTENSE 1905[#]
NMMF226 MILLAH MURRAH RIGHT TIME F226^{PV}
YTHANBRAE HENRY VIII U8^{SV}
MILLAH MURRAH ABIGAIL Y132[#]
MILLAH MURRAH ABIGAIL S104[#]
BASIN FRANCHISE P142[#]
EF COMPLEMENT 8088^{PV}
EF EVERELDA ENTENSE 6117[#]
NMML217 MILLAH MURRAH PRUE L217^{PV}
MILLAH MURRAH EQUATOR D78^{PV}
MILLAH MURRAH SUSAN H265^{PV}
HAZELDEAN Y275^{SV}

August 2019 Angus Australia BREEDPLAN									
	Calv. Ease Direct	Calv. Ease Dtrs	Gest Lgth	Birth Wt. (kg)	200 Day (kg)	400 Day (kg)	600 Day (kg)	Mat. Cow (kg)	Milk (kg)
EBV	+2.1	+1.5	-5.1	+4.1	+45	+83	+108	+94	+17
Acc	49%	49%	84%	72%	68%	66%	70%	63%	56%
Scrot. Size (cm)	Days to Calv.	Carc Wt. (kg)	EMA (sqcm)	Rib Fat (mm)	Rump Fat (mm)	RBV %	IMF %	NFI-F (kg/day)	Doc
+1.8	-5.0	+57	+6.2	+0.0	+0.7	+0.6	+1.0	+0.11	+9
70%	41%	60%	58%	62%	59%	56%	58%	51%	50%

Trails Observed: GL,BWT,200WT,600WT,SC,Scan(EMA,Rib,Rump,IMF),DOC,Genomics(CE,S-Step)

Selection Indexes			
Angus Breeding	Domestic	Heavy Grain	Heavy Grass
+\$114	+\$110	+\$110	+\$115

Versatile bull for use over heifers or cows as needed. Heifer's calf.

Purchaser: \$

Purchaser: \$

35 MILLAH MURRAH PROMISE P120^{SV}

Born: 16/08/2018 Ident: NMMP120 Regn: HBR
AMFU,CAFU,DDFU,NHFU



TE MANIA BERKLEY B1^{PV}
TE MANIA EMPEROR E343^{PV}
TE MANIA LOWAN Z74^{PV}
QQFH147 ASCOT HALLMARK H147^{PV}
MILLAH MURRAH DIGBY D108^{PV}
MILLAH MURRAH BRENDA F123^{PV}
MILLAH MURRAH BRENDA D113^{PV}
TE MANIA INFINITY 04 379 AB[#]
MILLAH MURRAH INFINITY D105^{PV}
MILLAH MURRAH PRUE B65^{PV}
NMMG43 MILLAH MURRAH FLOWER G43^{PV}
H A POWER ALLIANCE 1025[#]
MILLAH MURRAH FLOWER C76^{SV}
MILLAH MURRAH FLOWER Y57[#]

August 2019 Angus Australia BREEDPLAN									
Angus	Calv. Ease Direct	Calv. Ease Dtrs	Gest Lgth	Birth Wt. (kg)	200 Day (kg)	400 Day (kg)	600 Day (kg)	Mat. Cow (kg)	Milk (kg)
EBV	-0.3	-0.8	-5.5	+4.5	+48	+94	+130	+119	+15
Acc	55%	52%	85%	76%	74%	73%	72%	70%	65%
Scrot. Size (cm)	Days to Calv.	Carc Wt. (kg)	EMA (sqcm)	Rib Fat (mm)	Rump Fat (mm)	RBV %	IMF %	NFI-F (kg/day)	Doc
+2.2	-6.6	+72	+3.6	-0.5	-0.6	+0.0	+2.1	+0.55	-
75%	45%	67%	66%	69%	67%	64%	65%	59%	-

Trails Observed: GL,CE,BWT,400WT(x2),SC,Scan(EMA,Rib,Rump,IMF),Genomics(CE,S-Step)

Selection Indexes

Angus Breeding	Domestic	Heavy Grain	Heavy Grass
+\$133	+\$113	+\$149	+\$125

A cracking Hallmark son to lead off the yearlings, certainly stud quality. P120 is big enough to join cows, but would be equally at home used on heifers. Dam has a prolific progeny record with six calves fetching five figures. Grand dam C76 was the \$28,000 sale topper at our 2013 cow sale.

Purchaser: \$.....



36 MILLAH MURRAH PROMISE P117^{PV}

Born: 14/08/2018 Ident: NMMP117 Regn: HBR
AMFU,CAFU,DDFU,NHFU



TE MANIA BERKLEY B1^{PV}
TE MANIA EMPEROR E343^{PV}
TE MANIA LOWAN Z74^{PV}
QQFH147 ASCOT HALLMARK H147^{PV}
MILLAH MURRAH DIGBY D108^{PV}
MILLAH MURRAH BRENDA F123^{PV}
MILLAH MURRAH BRENDA D113^{PV}
WAITARA VALLEY TEX[#]
HINGAIA 469[#]
HINGAIA 910[#]
NMMF6 MILLAH MURRAH BRENDA F6^{PV}
YTHANBRAE HENRY VIII U8^{SV}
MILLAH MURRAH BRENDA Y33[#]
MILLAH MURRAH BRENDA U121[#]

August 2019 Angus Australia BREEDPLAN									
Angus	Calv. Ease Direct	Calv. Ease Dtrs	Gest Lgth	Birth Wt. (kg)	200 Day (kg)	400 Day (kg)	600 Day (kg)	Mat. Cow (kg)	Milk (kg)
EBV	-1.0	+0.4	-3.9	+5.3	+43	+85	+114	+100	+12
Acc	58%	54%	74%	76%	75%	73%	73%	69%	64%
Scrot. Size (cm)	Days to Calv.	Carc Wt. (kg)	EMA (sqcm)	Rib Fat (mm)	Rump Fat (mm)	RBV %	IMF %	NFI-F (kg/day)	Doc
+3.9	-7.1	+56	+5.7	+0.5	+1.4	+0.2	+2.1	+0.63	-
71%	48%	68%	67%	70%	67%	65%	66%	61%	-

Trails Observed: BWT,400WT(x2),Scan(EMA,Rib,Rump,IMF),Genomics(CE,S-Step)

Selection Indexes

Angus Breeding	Domestic	Heavy Grain	Heavy Grass
+\$131	+\$114	+\$143	+\$123

Another bull worthy of stud duties on pedigree alone. Brenda F6 sold for \$30,000 to Heart & Cherylton in 2017 with matriarch status. Through ET, she has 61 progeny in 12 Stud's across Australia. F6 has produced over \$180K in sales for us. She has two further bull calves at Lot 53 & 54. Combined with Hallmark these are supreme maternal Angus genetics.

Purchaser: \$.....

Flower C76: grand dam of Lot 35

Brenda F6: Dam of Lots 36, 53 & 54



Lot 37: Chisum P108

37 MILLAH MURRAH CHISUM P108^{PV}

Born: 12/08/2018 Ident: NMMP108 Regn: HBR
AMFU,CAFU,DDFU,NHFU



S ALLIANCE 3313#
S CHISUM 6175^{PV}
S GLORIA 464#
USA17298481 S CHISUM 255^{SV}
SHIPWHEEL CHINOOK#
S BLOSSOM 0278#
S BLOSSOM 8378#
TE MANIA BERKLEY B1^{PV}
TE MANIA EMPEROR E343^{PV}
TE MANIA LOWAN Z74^{PV}
NMMH52 MILLAH MURRAH ABIGAIL H52^{PV}
MILLAH MURRAH WOODY W100#
MILLAH MURRAH ABIGAIL A65^{PV}
MILLAH MURRAH ABIGAIL Y128#

August 2019 Angus Australia BREEDPLAN									
	Calv. Ease Direct	Calv. Ease Dtrs	Gest Lgth	Birth Wt. (kg)	200 Day (kg)	400 Day (kg)	600 Day (kg)	Mat. Cow (kg)	Milk (kg)
EBV	+1.2	+2.7	-5.9	+4.3	+52	+90	+111	+89	+17
Acc	49%	47%	85%	73%	70%	67%	67%	63%	59%
Scrot. Size (cm)	Days to Calv.	Carc Wt. (kg)	EMA (sqcm)	Rib Fat (mm)	Rump Fat (mm)	RBV %	IMF %	NFI-F (kg/day)	Doc
+0.9	-5.7	+61	+3.8	+2.6	+4.3	-1.8	+1.9	-0.34	-
70%	39%	61%	59%	62%	58%	56%	58%	50%	-

Trails Observed: GL,CE,BWT,400WT(x2),SC,Scan(EMA,Rib,Rump,IMF),Genomics(CE,S-Step)

Selection Indexes			
Angus Breeding	Domestic	Heavy Grain	Heavy Grass
+\$115	+\$110	+\$110	+\$117

Phenomenal calf. The first Chisum 255 son to sell in Australia. P108 weighed 572kg by 11 months, 30kg ahead of the pack. 111 cannot hold him for growth. P108 shows enormous fleshing, with loose skin folds all along his body. Descended from the extraordinary matriarch cow Abigail S104, his dam owns a strong progeny record with sons to \$14,000 and the cracking Hector son at Lot 21. I'd love to see P108 get stud usage.

Purchaser: \$

38 MILLAH MURRAH CHISUM P110^{PV}

Born: 13/08/2018 Ident: NMMP110 Regn: HBR
AMFU,CAFU,DDFU,NHFU



S ALLIANCE 3313#
S CHISUM 6175^{PV}
S GLORIA 464#
USA17298481 S CHISUM 255^{SV}
SHIPWHEEL CHINOOK#
S BLOSSOM 0278#
S BLOSSOM 8378#
TE MANIA BERKLEY B1^{PV}
TE MANIA EMPEROR E343^{PV}
TE MANIA LOWAN Z74^{PV}
NMMH34 MILLAH MURRAH RADO H34^{SV}
MILLAH MURRAH WOODY W100#
MILLAH MURRAH RADO E49^{PV}
MILLAH MURRAH RADO Y109#

August 2019 Angus Australia BREEDPLAN									
	Calv. Ease Direct	Calv. Ease Dtrs	Gest Lgth	Birth Wt. (kg)	200 Day (kg)	400 Day (kg)	600 Day (kg)	Mat. Cow (kg)	Milk (kg)
EBV	+0.9	+2.4	-6.3	+4.2	+53	+92	+117	+109	+15
Acc	49%	47%	85%	73%	70%	67%	67%	63%	58%
Scrot. Size (cm)	Days to Calv.	Carc Wt. (kg)	EMA (sqcm)	Rib Fat (mm)	Rump Fat (mm)	RBV %	IMF %	NFI-F (kg/day)	Doc
+2.7	-5.0	+63	+5.8	-1.7	-1.6	+1.8	+0.9	-0.18	-
70%	39%	61%	59%	62%	58%	55%	57%	49%	-

Trails Observed: GL,CE,BWT,400WT(x2),SC,Scan(EMA,Rib,Rump,IMF),Genomics(CE,S-Step)

Selection Indexes			
Angus Breeding	Domestic	Heavy Grain	Heavy Grass
+\$120	+\$119	+\$121	+\$119

P110 displays the tremendous fleshing and volume we expected to see, when Dimity and I viewed Chisum 255. He comes from a cow whose three previous sons have sold to average \$20,000! P110 carries a small swelling on his off side hock from an injury as a calf. The vet expects no interference with his working ability, but we note it in the event any issues arise.

Purchaser: \$

39 MILLAH MURRAH PACINO P118^{PV}

Born: 15/08/2018 Ident: NMMP118 Regn: HBR
AMFU,CAFU,DDFU,NHFU



B/R NEW DESIGN 036[#]
BOOROOMOOKA THEO T030^{SV}
BOOROOMOOKA QJAINT Q34+95[#]
NMMK42 MILLAH MURRAH KLOONEY K42^{PV}
TE MANIA EMPEROR E343^{PV}
MILLAH MURRAH PRUE H4^{SV}
MILLAH MURRAH PRUE F12^{PV}
KAROO W109 DIRECTION Z181^{SV}
CARABAR DOCKLANDS D62^{PV}
CARABAR BLACKCAP MARY B12^{PV}
NMMJ190 MILLAH MURRAH BRENDA J190^{SV}
MILLAH MURRAH DIGBY D108^{PV}
MILLAH MURRAH BRENDA F123^{PV}
MILLAH MURRAH BRENDA D113^{PV}

August 2019 Angus Australia BREEDPLAN									
	Calv. Ease Direct	Calv. Ease Dtrs	Gest Lgth	Birth Wt. (kg)	200 Day (kg)	400 Day (kg)	600 Day (kg)	Mat. Cow (kg)	Milk (kg)
EBV	+2.8	+1.6	-5.5	+5.4	+49	+85	+116	+91	+19
Acc	57%	56%	84%	74%	72%	70%	70%	67%	60%
Scrot. Size (cm)	Days to Calv.	Carc Wt. (kg)	EMA (sqcm)	Rib Fat (mm)	Rump Fat (mm)	RBV %	IMF %	NFI-F (kg/day)	Doc
+1.6	-7.9	+62	+3.2	+0.4	-0.4	-0.3	+2.1	+0.45	-
74%	46%	65%	64%	67%	64%	60%	63%	58%	-

Traits Observed: GL,CE,BWT,400WT(x2),SC,Scan(EMA,Rib,Rump,IMF),Genomics(CE,S-Step)

Selection Indexes			
Angus Breeding	Domestic	Heavy Grain	Heavy Grass
+\$128	+\$112	+\$139	+\$122

Beautifully put together youngster. His dam's full brother was the \$17,000, 2014 high selling yearling bull. She is Hallmark's maternal sister. J190's 1st son fetched \$14,000 and a full brother sold last year as a yearling for \$12,000. As I wrote for the full brother, P118 is certainly worthy of stud consideration and suitable to go over cows or heifers as required.

Purchaser: \$.....



Lot 38: Chisum P110



Flower G41: Dam of Lots 23, 40 & 41

40 MILLAH MURRAH COMMANDO P158^{PV}

Born: 3/08/2018 Ident: NMMP158 Regn: HBR
AMFU,CAFU,DDFU,NHFU



BASIN FRANCHISE P142[#]
EF COMPLEMENT 8088^{PV}
EF EVERELDA ENTENSE 6117[#]
USA17082311 EF COMMANDO 1366^{PV}
B/R AMBUSH 28[#]
RIVERBEND YOUNG LUCY W1470[#]
RIVERBEND YOUNG LUCY T1080[#]
LEACHMAN RIGHT TIME^{SV}
BT RIGHT TIME 24J[#]
SITZ EVERELDA ENTENSE 1905[#]
NMMG41 MILLAH MURRAH FLOWER G41^{PV}
BON VIEW NEW DESIGN 1407[#]
MILLAH MURRAH FLOWER C15^{SV}
MILLAH MURRAH FLOWER A81^{PV}

August 2019 Angus Australia BREEDPLAN									
	Calv. Ease Direct	Calv. Ease Dtrs	Gest Lgth	Birth Wt. (kg)	200 Day (kg)	400 Day (kg)	600 Day (kg)	Mat. Cow (kg)	Milk (kg)
EBV	+2.8	+2.9	-9.7	+1.2	+45	+84	+108	+78	+19
Acc	61%	46%	75%	75%	73%	72%	70%	67%	62%
Scrot. Size (cm)	Days to Calv.	Carc Wt. (kg)	EMA (sqcm)	Rib Fat (mm)	Rump Fat (mm)	RBV %	IMF %	NFI-F (kg/day)	Doc
-0.4	-6.0	+60	+6.8	+1.9	+3.3	-1.4	+2.6	+0.13	-
72%	43%	66%	64%	67%	63%	61%	63%	55%	-

Traits Observed: BWT,400WT(x2),SC,Scan(EMA,Rib,Rump,IMF),Genomics(CE,S-Step)

Selection Indexes			
Angus Breeding	Domestic	Heavy Grain	Heavy Grass
+\$129	+\$116	+\$133	+\$126

Weighing well over 500kg and with 35cm in the bag at 11 months, P158 has the lot. A brilliant EBV package for heifers, we expect him to grow into something pretty substantial. From one of the most prolific cows in the breed, Flower G41 is the \$150,000 Kingdom's mum, with a further 7 sons averaging \$20,500. This fellow has terrific shape and presence. Maternal brothers sell at Lot 23 & 41. Stud claims.

Purchaser: \$.....

41 MILLAH MURRAH CAPITALIST P190^{PV}

Born: 13/08/2018 Ident: NMMP190 Regn: HBR
AMFU,CAFU,DDFU,NHFU



S A V FINAL ANSWER 0035[#]
CONNEALY CAPITALIST 028[#]
PRIDES PITA OF CONANGA 8821[#]
USA17666102 LD CAPITALIST 316^{SV}
C A FUTURE DIRECTION 5321[#]
LD DIXIE ERICA 2053[#]
LD DIXIE ERICA OAR 0853[#]
LEACHMAN RIGHT TIME^{SV}
BT RIGHT TIME 24J[#]
SITZ EVERELDA ENTENSE 1905[#]
NMMG41 MILLAH MURRAH FLOWER G41^{PV}
BON VIEW NEW DESIGN 1407[#]
MILLAH MURRAH FLOWER C15^{SV}
MILLAH MURRAH FLOWER A81^{PV}

August 2019 Angus Australia BREEDPLAN									
	Calv. Ease Direct	Calv. Ease Dtrs	Gest Lgth	Birth Wt. (kg)	200 Day (kg)	400 Day (kg)	600 Day (kg)	Mat. Cow (kg)	Milk (kg)
EBV	+3.5	+2.4	-6.3	+3.2	+53	+100	+129	+101	+21
Acc	63%	44%	75%	75%	74%	72%	70%	66%	61%
Scrot. Size (cm)	Days to Calv.	Carc Wt. (kg)	EMA (sqcm)	Rib Fat (mm)	Rump Fat (mm)	RBV %	IMF %	NFI-F (kg/day)	Doc
+1.3	-4.5	+72	+5.7	+1.4	+1.5	-0.5	+2.1	-0.12	-
73%	42%	66%	64%	67%	64%	61%	63%	55%	-

Traits Observed: BWT,400WT(x2),SC,Scan(EMA,Rib,Rump,IMF),Genomics(CE,S-Step)

Selection Indexes			
Angus Breeding	Domestic	Heavy Grain	Heavy Grass
+\$135	+\$123	+\$141	+\$133

G41 gets the best out of any sire. In this sale she has sons at Lot 23, 40 & this bull, all by different sires and all at the top end of the offering. G41 already has ABS semen sires by another three different bulls. P190 is another youngster with enormous potential. Born at just 30kg, he passed 500kg before 11 months, confirming a tremendous EBV spread. Clearly suitable for heifers if needed.

Purchaser: \$.....



Lot 43: Commando P172



Prue H112: Dam of Lot 42

43 MILLAH MURRAH COMMANDO P172^{PV}

Born: 5/08/2018 Ident: NMMP172 Regn: HBR
AMFU,CAFU,DDFU,NHFU



BASIN FRANCHISE P142[#]
EF COMPLEMENT 8088^{PV}
EF EVERELDA ENTENSE 6117[#]
USA17082311 EF COMMANDO 1366^{PV}
B/R AMBUSH 28[#]
RIVERBEND YOUNG LUCY W1470[#]
RIVERBEND YOUNG LUCY T1080[#]
HINGAIA 469[#]
MILLAH MURRAH KINGDOM K35^{PV}
MILLAH MURRAH FLOWER G41^{PV}
NMMM222 MILLAH MURRAH ABIGAIL M222^{PV}
SILVEIRAS CONVERSION 8064[#]
MILLAH MURRAH ABIGAIL J284^{PV}
MILLAH MURRAH ABIGAIL Y108[#]

August 2019 Angus Australia BREEDPLAN									
	Calv. Ease Direct	Calv. Ease Dtrs	Gest Lgth	Birth Wt. (kg)	200 Day (kg)	400 Day (kg)	600 Day (kg)	Mat. Cow (kg)	Milk (kg)
EBV	-1.3	+0.6	-3.5	+6.6	+61	+105	+141	+134	+18
Acc	57%	41%	84%	73%	70%	68%	67%	63%	57%
Scrot. Size (cm)	Days to Calv.	Carc Wt. (kg)	EMA (sqcm)	Rib Fat (mm)	Rump Fat (mm)	RBY %	IMF %	NFI-F (kg/day)	Doc
-0.4	-4.6	+75	+9.4	+0.4	+0.7	+0.5	+0.3	+0.05	-
70%	38%	62%	60%	63%	60%	57%	59%	51%	-

Traits Observed: GL,CE,BWT,400WT(x2),SC,Scan(EMA,Rib,Rump,IMF),Genomics(CE,S-Step)

Selection Indexes			
Angus Breeding	Domestic	Heavy Grain	Heavy Grass
+\$123	+\$113	+\$115	+\$127

Powerful young sire, over 500kg before 11 months and easily capable of working a mob of cows. Heifer's calf.

Purchaser: \$

44 MILLAH MURRAH LOCH UP P106^{SV}

Born: 11/08/2018 Ident: NMMP106 Regn: HBR
AMFU,CAFU,DDFU,NHFU



SITZ UPWARD 307R^{SV}
THOMAS UP RIVER 1614^{PV}
THOMAS CAROL 7595[#]
NMML133 MILLAH MURRAH LOCH UP L133^{PV}
TE MANIA EMPEROR E343^{PV}
MILLAH MURRAH BRENDA H49^{SV}
MILLAH MURRAH BRENDA E64^{PV}
S A NEUTRON 377[#]
BOOROOMOOKA NEUTRON A238^{PV}
BOOROOMOOKA WAVELET W235[#]
NMMF7 MILLAH MURRAH ABIGAIL F7^{PV}
MILLAH MURRAH WOODY W100[#]
MILLAH MURRAH ABIGAIL A65^{PV}
MILLAH MURRAH ABIGAIL Y128[#]

August 2019 Angus Australia BREEDPLAN									
	Calv. Ease Direct	Calv. Ease Dtrs	Gest Lgth	Birth Wt. (kg)	200 Day (kg)	400 Day (kg)	600 Day (kg)	Mat. Cow (kg)	Milk (kg)
EBV	+0.7	+2.5	-8.6	+3.2	+51	+89	+116	+89	+21
Acc	52%	48%	85%	75%	73%	71%	71%	66%	59%
Scrot. Size (cm)	Days to Calv.	Carc Wt. (kg)	EMA (sqcm)	Rib Fat (mm)	Rump Fat (mm)	RBY %	IMF %	NFI-F (kg/day)	Doc
+3.9	-8.4	+71	+5.0	+2.5	+2.9	-0.8	+1.4	+0.20	-
74%	39%	62%	63%	66%	63%	59%	62%	58%	-

Traits Observed: GL,CE,BWT,400WT(x2),SC,Scan(EMA,Rib,Rump,IMF),Genomics(CE,S-Step)

Selection Indexes			
Angus Breeding	Domestic	Heavy Grain	Heavy Grass
+\$126	+\$113	+\$123	+\$125

Great balance from all angles. Like so many bulls in this sale, P106 can be put to work on heifers, but has much more to him than the stereotype heifer bull image. He comes from the legendary Abigail S104 maternal line. Five F7 progeny have sold to \$16,000.

Purchaser: \$

42 MILLAH MURRAH PILOT P105^{PV}

Born: 7/08/2018 Ident: NMMP105 Regn: HBR
AMFU,CAFU,DDFU,NHFU



SITZ UPWARD 307R^{SV}
KROUPALS B&B IDENTITY[#]
B&B ERICA 605[#]
USA17264774 MUSGRAVE AVIATOR^{SV}
S A V FINAL ANSWER 0035[#]
MCATL FOREVER LADY 1429-138[#]
ALC FOREVER LADY R02S[#]
B/R NEW DESIGN 036[#]
YTHANBRAE HENRY VIII U8^{SV}
G A R MAX 678[#]
NMMH112 MILLAH MURRAH PRUE H112^{PV}
CRUSADER OF STERN AB[#]
MILLAH MURRAH PRUE C48^{SV}
MILLAH MURRAH PRUE Y68[#]

August 2019 Angus Australia BREEDPLAN									
	Calv. Ease Direct	Calv. Ease Dtrs	Gest Lgth	Birth Wt. (kg)	200 Day (kg)	400 Day (kg)	600 Day (kg)	Mat. Cow (kg)	Milk (kg)
EBV	+0.9	+0.6	-5.4	+3.3	+45	+84	+100	+86	+18
Acc	50%	47%	69%	74%	72%	70%	69%	65%	60%
Scrot. Size (cm)	Days to Calv.	Carc Wt. (kg)	EMA (sqcm)	Rib Fat (mm)	Rump Fat (mm)	RBY %	IMF %	NFI-F (kg/day)	Doc
+0.4	-2.2	+65	+6.2	-0.3	-1.3	+0.6	+2.5	-0.15	-
71%	40%	64%	62%	65%	62%	59%	61%	52%	-

Traits Observed: BWT,400WT(x2),SC,Scan(EMA,Rib,Rump,IMF),Genomics(CE,S-Step)

Selection Indexes			
Angus Breeding	Domestic	Heavy Grain	Heavy Grass
+\$106	+\$111	+\$113	+\$104

Maternal Angus pedigrees don't come better. P105's dam is the \$54,000 record priced mature cow of the breed to East West Angus. Her full sister is the only cow to have produced three bulls at \$40,000 or more. P105 presents an exciting, versatile, outcross option, with tremendous thickness and style. Full brother fetched \$14,000 last year.

Purchaser: \$

45 MILLAH MURRAH LOCH UP P122^{PV}

Born: 18/08/2018 Ident: NMMP122 Regn: HBR
AMFU,CAFU,DDFU,NHFU



SITZ UPWARD 307R^{SV}
THOMAS UP RIVER 1614^{PV}
THOMAS CAROL 7595[#]
NMML133 MILLAH MURRAH LOCH UP L133^{PV}
TE MANIA EMPEROR E343^{PV}
MILLAH MURRAH BRENDA H49^{SV}
MILLAH MURRAH BRENDA E64^{PV}
MILLAH MURRAH EQUATOR D78^{PV}
MILLAH MURRAH DOC F159^{PV}
HAZELDEAN Y275^{SV}
NMMH311 MILLAH MURRAH BEAC H311^{SV}
SITZ NEW DESIGN 458N[#]
MILLAH MURRAH BEAC D175^{DV}
HAZELDEAN Y277^{SV}

August 2019 Angus Australia BREEDPLAN									
	Calv. Ease Direct	Calv. Ease Dtrs	Gest Lgth	Birth Wt. (kg)	200 Day (kg)	400 Day (kg)	600 Day (kg)	Mat. Cow (kg)	Milk (kg)
EBV	-2.4	-0.5	-5.6	+3.5	+50	+89	+111	+83	+21
Acc	52%	47%	85%	74%	72%	70%	70%	66%	57%
Scrot. Size (cm)	Days to Calv.	Carc Wt. (kg)	EMA (sqcm)	Rib Fat (mm)	Rump Fat (mm)	RBV %	IMF %	NFI-F (kg/day)	Doc
+2.5	-7.2	+71	+2.6	+1.4	+1.0	-0.6	+1.8	-0.17	-
73%	39%	62%	62%	65%	62%	58%	61%	58%	-

Traits Observed: GL,CE,BWT,400WT(x2),SC,Scan(EMA,Rib,Rump,IMF),Genomics(CE,S-Step)

Selection Indexes			
Angus Breeding	Domestic	Heavy Grain	Heavy Grass
+\$110	+\$105	+\$110	+\$108

Stylish young bull that should work well on heifers.

Purchaser: \$.....



Lot 47: Capitalist P180



Flower F206: 3rd dam of Lot 47

46 MILLAH MURRAH CHISUM P123^{PV}

Born: 20/08/2018 Ident: NMMP123 Regn: HBR
AMFU,CAFU,DDFU,NHFU



S ALLIANCE 3313[#]
S CHISUM 6175^{PV}
S GLORIA 464[#]
USA17298481 S CHISUM 255^{SV}
SHIPWHEEL CHINOOK[#]
S BLOSSOM 0278[#]
S BLOSSOM 8378[#]
SCHURRTOP REALITY X723[#]
MATAURI REALITY 839[#]
MATAURI 06663[#]
NMMK47 MILLAH MURRAH FLOWER K47^{PV}
TE MANIA EMPEROR E343^{PV}
MILLAH MURRAH FLOWER H94^{PV}
MILLAH MURRAH FLOWER C43^{SV}

August 2019 Angus Australia BREEDPLAN									
	Calv. Ease Direct	Calv. Ease Dtrs	Gest Lgth	Birth Wt. (kg)	200 Day (kg)	400 Day (kg)	600 Day (kg)	Mat. Cow (kg)	Milk (kg)
EBV	+2.1	+3.1	-3.2	+2.9	+46	+81	+96	+67	+19
Acc	49%	47%	84%	73%	70%	67%	67%	63%	57%
Scrot. Size (cm)	Days to Calv.	Carc Wt. (kg)	EMA (sqcm)	Rib Fat (mm)	Rump Fat (mm)	RBV %	IMF %	NFI-F (kg/day)	Doc
+2.8	-7.9	+49	+4.7	+4.1	+5.4	-1.3	+0.7	+0.36	-
70%	38%	61%	59%	62%	58%	56%	58%	50%	-

Traits Observed: GL,CE,BWT,400WT(x2),SC,Scan(EMA,Rib,Rump,IMF),Genomics(CE,S-Step)

Selection Indexes			
Angus Breeding	Domestic	Heavy Grain	Heavy Grass
+\$108	+\$109	+\$90	+\$114

A pedigree stacked for calving ease and maternal class. The dam, K47 is a beautiful cow, descended from the grand matriarch Flower G20, with Crusader of Stern on the next pedigree line as sire of C43. 255 sons will not be easy to find. He is a bull deeply admired by some of the toughest judges in the Angus breed and very limited semen came to these shores.

Purchaser: \$.....

47 MILLAH MURRAH CAPITALIST P180^{PV}

Born: 7/08/2018 Ident: NMMP180 Regn: HBR
AMFU,CAFU,DDFU,NHFU



S A V FINAL ANSWER 0035[#]
CONNEALY CAPITALIST 028[#]
PRIDES PITA OF CONANGA 8821[#]
USA17666102 LD CAPITALIST 316^{SV}
C A FUTURE DIRECTION 5321[#]
LD DIXIE ERICA 2053[#]
LD DIXIE ERICA OAR 0853[#]
TUWHARETOA REGENT D145^{PV}
COONAMBLE JESTER J268^{PV}
BANGADANG LOWAN A61^{PV}
NMMM373 MILLAH MURRAH FLOWER M373^{PV}
R/M IRONSTONE 4047[#]
MILLAH MURRAH FLOWER H201^{SV}
MILLAH MURRAH FLOWER F206^{PV}

August 2019 Angus Australia BREEDPLAN									
	Calv. Ease Direct	Calv. Ease Dtrs	Gest Lgth	Birth Wt. (kg)	200 Day (kg)	400 Day (kg)	600 Day (kg)	Mat. Cow (kg)	Milk (kg)
EBV	-0.4	-0.9	-1.9	+5.5	+54	+96	+119	+120	+10
Acc	59%	38%	85%	74%	71%	69%	67%	63%	56%
Scrot. Size (cm)	Days to Calv.	Carc Wt. (kg)	EMA (sqcm)	Rib Fat (mm)	Rump Fat (mm)	RBV %	IMF %	NFI-F (kg/day)	Doc
+0.2	-2.7	+78	+6.2	-1.8	-2.8	+1.2	+2.0	-0.35	-
71%	36%	61%	60%	64%	60%	57%	59%	49%	-

Traits Observed: GL,CE,BWT,400WT(x2),SC,Scan(EMA,Rib,Rump,IMF),Genomics(CE,S-Step)

Selection Indexes			
Angus Breeding	Domestic	Heavy Grain	Heavy Grass
+\$115	+\$115	+\$125	+\$111

Heifer's calf, again descended from the Flower G20 line. P180 displays terrific body shape and true to type Angus eye appeal.

Purchaser: \$.....

48 MILLAH MURRAH LOCH UP P160^{PV}

Born: 3/08/2018 Ident: NMMP160 Regn: HBR
AMFU, CAFU, DDFU, NHFU



SITZ UPWARD 307R^{SV}
THOMAS UP RIVER 1614^{PV}
THOMAS CAROL 7595[#]
NMML133 MILLAH MURRAH LOCH UP L133^{PV}
TE MANIA EMPEROR E343^{PV}
MILLAH MURRAH BRENDA H49^{SV}
MILLAH MURRAH BRENDA E64^{PV}
K C F BENNETT PERFORMER[#]
COONAMBLE HECTOR H249^{SV}
COONAMBLE E9^{PV}
NMMM331 MILLAH MURRAH BEAC M331^{SV}
MILLAH MURRAH NEUTRON E78^{PV}
MILLAH MURRAH BEAC G254^{PV}
HAZELDEAN Y277^{SV}

August 2019 Angus Australia BREEDPLAN									
	Calv. Ease Direct	Calv. Ease Dtrs	Gest Lgth	Birth Wt. (kg)	200 Day (kg)	400 Day (kg)	600 Day (kg)	Mat. Cow (kg)	Milk (kg)
EBV	-1.4	-0.2	-4.3	+3.8	+53	+93	+128	+113	+20
Acc	57%	38%	85%	73%	71%	70%	69%	62%	54%
Scrot. Size (cm)	Days to Calv.	Carc Wt. (kg)	EMA (sqcm)	Rib Fat (mm)	Rump Fat (mm)	RBV %	IMF %	NFI-F (kg/day)	Doc
+1.7	-4.2	+78	+2.0	-1.9	-2.2	+0.0	+2.1	-0.55	-
72%	37%	61%	61%	64%	61%	57%	60%	57%	-

Traits Observed: GL, CE, BWT, 400WT(x2), SC, Scan(EMA, Rib, Rump, IMF), Genomics(CE, S-Step)

Selection Indexes			
Angus Breeding	Domestic	Heavy Grain	Heavy Grass
+\$114	+\$104	+\$123	+\$110

Heifer's calf with a pedigree combining two of the best recent Australian sires. Should be safe on heifers if required.



Prue F203: 3rd dam of Lot 51



Lot 50: Capitalist P201

Purchaser: \$

49 MILLAH MURRAH LOCH UP P140^{PV}

Born: 30/07/2018 Ident: NMMP140 Regn: APR
AMFU, CAFU, DDFU, NHFU



SITZ UPWARD 307R^{SV}
THOMAS UP RIVER 1614^{PV}
THOMAS CAROL 7595[#]
NMML133 MILLAH MURRAH LOCH UP L133^{PV}
TE MANIA EMPEROR E343^{PV}
MILLAH MURRAH BRENDA H49^{SV}
MILLAH MURRAH BRENDA E64^{PV}
TE MANIA EMPEROR E343^{PV}
ASCOT HALLMARK H147^{PV}
MILLAH MURRAH BRENDA F123^{PV}
NMMM353 MILLAH MURRAH M353^{PV}
BOOROOMOOKA THEO T030^{SV}
MILLAH MURRAH H195^{SV}
MILLAH MURRAH F222[#]

August 2019 Angus Australia BREEDPLAN									
	Calv. Ease Direct	Calv. Ease Dtrs	Gest Lgth	Birth Wt. (kg)	200 Day (kg)	400 Day (kg)	600 Day (kg)	Mat. Cow (kg)	Milk (kg)
EBV	+0.7	+1.1	-5.0	+2.9	+47	+86	+111	+83	+18
Acc	57%	39%	85%	74%	71%	70%	69%	63%	54%
Scrot. Size (cm)	Days to Calv.	Carc Wt. (kg)	EMA (sqcm)	Rib Fat (mm)	Rump Fat (mm)	RBV %	IMF %	NFI-F (kg/day)	Doc
+2.3	-6.2	+68	+4.1	-0.1	-0.5	-0.4	+2.5	+0.06	-
73%	39%	61%	62%	65%	62%	57%	61%	58%	-

Traits Observed: GL, CE, BWT, 400WT(x2), SC, Scan(EMA, Rib, Rump, IMF), Genomics(CE, S-Step)

Selection Indexes			
Angus Breeding	Domestic	Heavy Grain	Heavy Grass
+\$122	+\$112	+\$132	+\$117

Heifer's calf, again with a brilliant combination of the best Australian sire lines. Great balance of pedigree, numbers and looks. Suitable for heifers.

Purchaser: \$

50 MILLAH MURRAH CAPITALIST P201^{PV}

Born: 23/08/2018 Ident: NMMP201 Regn: HBR
AMFU, CAFU, DDFU, NHFU



S A V FINAL ANSWER 0035[#]
CONNEALY CAPITALIST 028[#]
PRIDES PITA OF CONANGA 8821[#]
USA17666102 LD CAPITALIST 316^{SV}
C A FUTURE DIRECTION 5321[#]
LD DIXIE ERICA 2053[#]
LD DIXIE ERICA OAR 0853[#]
HINGAIA 469[#]
MILLAH MURRAH KINGDOM K35^{PV}
MILLAH MURRAH FLOWER G41^{PV}
NMMM229 MILLAH MURRAH FLOWER M229^{SV}
MILLAH MURRAH DIGBY D108^{PV}
MILLAH MURRAH FLOWER F171^{PV}
MILLAH MURRAH FLOWER D139^{PV}

August 2019 Angus Australia BREEDPLAN									
	Calv. Ease Direct	Calv. Ease Dtrs	Gest Lgth	Birth Wt. (kg)	200 Day (kg)	400 Day (kg)	600 Day (kg)	Mat. Cow (kg)	Milk (kg)
EBV	+1.7	+1.9	-5.0	+4.0	+54	+97	+126	+105	+20
Acc	59%	38%	74%	73%	71%	69%	67%	63%	56%
Scrot. Size (cm)	Days to Calv.	Carc Wt. (kg)	EMA (sqcm)	Rib Fat (mm)	Rump Fat (mm)	RBV %	IMF %	NFI-F (kg/day)	Doc
+1.4	-4.6	+76	+5.1	+0.5	+0.4	+0.0	+1.0	+0.06	-
71%	36%	62%	61%	64%	60%	57%	60%	50%	-

Traits Observed: CE, BWT, 400WT(x2), SC, Scan(EMA, Rib, Rump, IMF), Genomics(CE, S-Step)

Selection Indexes			
Angus Breeding	Domestic	Heavy Grain	Heavy Grass
+\$119	+\$114	+\$115	+\$122

Another heifer's calf really hitting his straps. These youngsters have come on enormously, having been raised in tough drought conditions. 2nd youngest bull in the sale. P201 carries a useful degree of quality genetic variation to many mainstream Angus bloodlines. He'll be safe on heifers if used that way.

Purchaser: \$

51 MILLAH MURRAH PACINO P142^{PV}

Born: 31/07/2018 Ident: NMMP142 Regn: HBR
AMFU,CAFU,DDFU,NHFU



B/R NEW DESIGN 036[#]
BOOROOMOOKA THEO T030^{SV}
BOOROOMOOKA QUAIN T Q34+95[#]
NMMK42 MILLAH MURRAH KLOONEY K42^{PV}
TE MANIA EMPEROR E343^{PV}
MILLAH MURRAH PRUE H4^{SV}
MILLAH MURRAH PRUE F12^{PV}
K C F BENNETT PERFORMER[#]
COONAMBLE HECTOR H249^{SV}
COONAMBLE E9^{PV}
NMMM186 MILLAH MURRAH PRUE M186^{PV}
EF COMPLEMENT 8088^{PV}
MILLAH MURRAH PRUE K279^{SV}
MILLAH MURRAH PRUE F203^{PV}

August 2019 Angus Australia BREEDPLAN									
	Calv. Ease Direct	Calv. Ease Dtrs	Gest Lgth	Birth Wt. (kg)	200 Day (kg)	400 Day (kg)	600 Day (kg)	Mat. Cow (kg)	Milk (kg)
EBV	+2.8	+1.5	-6.6	+5.4	+52	+90	+114	+100	+14
Acc	61%	49%	85%	74%	71%	69%	69%	64%	57%
Scrot. Size (cm)	Days to Calv.	Carc Wt. (kg)	EMA (sqcm)	Rib Fat (mm)	Rump Fat (mm)	RBV %	IMF %	NFI-F (kg/day)	Doc
+2.1	-3.6	+67	+8.3	+0.1	-0.4	+1.3	+1.7	+0.25	-
72%	43%	64%	63%	66%	63%	59%	62%	56%	-

Traits Observed: GL,CE,BWT,400WT(x2),SC,Scan(EMA,Rib,Rump,IMF),Genomics(CE,S-Step)

Selection Indexes			
Angus Breeding	Domestic	Heavy Grain	Heavy Grass
+\$125	+\$121	+\$129	+\$123

Heifer's calf, so hard to fault from any angle. P142 has a superb pedigree, hole proof data and plenty of eye appeal and would not be out of place performing stud duties. He carries the brilliant Klooney traits of solid birth weight, very short gestation and strong calving ease credentials. He is a genuine all rounder suited to perform in any role.

Purchaser: \$.....

52 MILLAH MURRAH COMMANDO P154^{PV}

Born: 2/08/2018 Ident: NMMP154 Regn: HBR
AMFU,CAFU,DDFU,NHFU



BASIN FRANCHISE P142[#]
EF COMPLEMENT 8088^{PV}
EF EVERELDA ENTENSE 6117[#]
USA17082311 EF COMMANDO 1366^{PV}
B/R AMBUSH 28[#]
RIVERBEND YOUNG LUCY W1470[#]
RIVERBEND YOUNG LUCY T1080[#]
HINGAIA 469[#]
MILLAH MURRAH KINGDOM K35^{PV}
MILLAH MURRAH FLOWER G41^{PV}
NMMM322 MILLAH MURRAH ABIGAIL M322^{PV}
MILLAH MURRAH EMPEROR H125^{SV}
MILLAH MURRAH ABIGAIL K236^{SV}
MILLAH MURRAH ABIGAIL F190[#]

August 2019 Angus Australia BREEDPLAN									
	Calv. Ease Direct	Calv. Ease Dtrs	Gest Lgth	Birth Wt. (kg)	200 Day (kg)	400 Day (kg)	600 Day (kg)	Mat. Cow (kg)	Milk (kg)
EBV	+1.2	+2.4	-4.5	+4.2	+50	+95	+121	+113	+15
Acc	57%	40%	84%	73%	70%	68%	67%	63%	56%
Scrot. Size (cm)	Days to Calv.	Carc Wt. (kg)	EMA (sqcm)	Rib Fat (mm)	Rump Fat (mm)	RBV %	IMF %	NFI-F (kg/day)	Doc
+0.2	-5.2	+58	+6.9	+1.1	+2.4	-0.8	+1.7	-0.29	-
70%	37%	62%	60%	64%	60%	57%	59%	50%	-

Traits Observed: GL,CE,BWT,400WT(x2),SC,Scan(EMA,Rib,Rump,IMF),Genomics(CE,S-Step)

Selection Indexes			
Angus Breeding	Domestic	Heavy Grain	Heavy Grass
+\$126	+\$116	+\$127	+\$125

Extremely eye catching young sire with plenty of swagger about him. Another heifer's calf and like so many of these yearlings, a bull to fill the multi purpose role as a joining sire for heifers or cows alike. The Commando x Kingdom match up works. Another bull that would not be out of place in a stud programme.

Purchaser: \$.....

53 MILLAH MURRAH PILOT P151^{PV}

Born: 1/08/2018 Ident: NMMP151 Regn: HBR
AMFU,CAFU,DDFU,NHFU



SITZ UPWARD 307R^{SV}
KROUPALS B&B IDENTITY[#]
B&B ERICA 605[#]
USA17264774 MUSGRAVE AVIATOR^{SV}
S A V FINAL ANSWER 0035[#]
MCATL FOREVER LADY 1429-138[#]
ALC FOREVER LADY R02S[#]
WAITARA VALLEY TEX[#]
HINGAIA 469[#]
HINGAIA 910[#]
NMMF6 MILLAH MURRAH BRENDA F6^{PV}
YTHANBRAE HENRY VIII U8^{SV}
MILLAH MURRAH BRENDA Y33[#]
MILLAH MURRAH BRENDA U121[#]

August 2019 Angus Australia BREEDPLAN									
	Calv. Ease Direct	Calv. Ease Dtrs	Gest Lgth	Birth Wt. (kg)	200 Day (kg)	400 Day (kg)	600 Day (kg)	Mat. Cow (kg)	Milk (kg)
EBV	+4.5	+3.2	-4.5	+1.4	+35	+70	+83	+46	+19
Acc	57%	41%	70%	73%	72%	71%	70%	65%	61%
Scrot. Size (cm)	Days to Calv.	Carc Wt. (kg)	EMA (sqcm)	Rib Fat (mm)	Rump Fat (mm)	RBV %	IMF %	NFI-F (kg/day)	Doc
+2.5	-4.5	+48	+9.0	-0.2	-1.6	+2.4	+1.1	-0.16	-
72%	41%	64%	63%	65%	62%	59%	62%	53%	-

Traits Observed: BWT,400WT(x2),SC,Scan(EMA,Rib,Rump,IMF),Genomics(CE,S-Step)

Selection Indexes			
Angus Breeding	Domestic	Heavy Grain	Heavy Grass
+\$111	+\$117	+\$107	+\$112

Superb meat content in these next two sires. They are progeny of the amazing Brenda F6, who sold in 2017 for \$30,000 with \$180K in sales under her belt. Aviator progeny are rare as hens' teeth. 1st class outcross genetics - an opportunity not to be missed. Maternal brother sells at Lot 36. Suitable for heifers.

Purchaser: \$.....



Lot 53: Pilot P151



Lot 52: Commando P154



Lot 55: Lincoln P243



Brenda F6: Dam of Lots 36, 53 & 54

55 MILLAH MURRAH LINCOLN P243^{PV}

Born: 4/08/2018 Ident: NMMP243 Regn: HBR
AMFU,CAFU,DDFU,NHFU



BASIN FRANCHISE P142[#]
EF COMPLEMENT 8088^{PV}
EF EVERELDA ENTENSE 6117[#]
NMML119 MILLAH MURRAH LINCOLN L119^{PV}
TE MANIA EMPEROR E343^{PV}
MILLAH MURRAH PRUE H62^{SV}
MILLAH MURRAH PRUE E107^{PV}
TUWHARETOA REGENT D145^{PV}
COONAMBLE JESTER J268^{PV}
BANGADANG LOWAN A61^{PV}
NMMM329 MILLAH MURRAH HONEY M329^{PV}
BOOROOMOOKA THEO T030^{SV}
MILLAH MURRAH HONEY H159^{SV}
MILLAH MURRAH HONEY F120^{PV}

August 2019 Angus Australia BREEDPLAN									
	Calv. Ease Direct	Calv. Ease Dtrs	Gest Lgth	Birth Wt. (kg)	200 Day (kg)	400 Day (kg)	600 Day (kg)	Mat. Cow (kg)	Milk (kg)
EBV	-1.0	-0.3	-4.8	+4.3	+54	+93	+122	+93	+22
Acc	56%	40%	85%	73%	69%	67%	67%	61%	53%
Scrot. Size (cm)	Days to Calv.	Carc Wt. (kg)	EMA (sqcm)	Rib Fat (mm)	Rump Fat (mm)	RBY %	IMF %	NFI-F (kg/day)	Doc
+1.4	-5.2	+74	+6.3	+0.8	+0.9	+0.1	+2.1	+0.18	-
71%	37%	59%	58%	62%	59%	55%	57%	49%	-

Traits Observed: GL,CE,BWT,400WT(x2),SC,Scan(EMA,Rump,IMF),Genomics(CE,S-Step)

Selection Indexes			
Angus Breeding	Domestic	Heavy Grain	Heavy Grass
+\$125	+\$114	+\$130	+\$123

Heifer's calf and a magnificent effort producing a bull of pure class. P243's dam is maternal sister to the all breeds record priced yearling bull and our \$54,000 2018 sale topper, Nugget N266. It's been said for a number of these yearling bulls, but this is another bull with stud sire possibilities.

Purchaser: \$

56 MILLAH MURRAH PACINO P130^{PV}

Born: 29/07/2018 Ident: NMMP130 Regn: HBR
AMFU,CAFU,DDFU,NHFU



B/R NEW DESIGN 036[#]
BOOROOMOOKA THEO T030^{SV}
BOOROOMOOKA QUAIN T034+95[#]
NMMK42 MILLAH MURRAH KLOONEY K42^{PV}
TE MANIA EMPEROR E343^{PV}
MILLAH MURRAH PRUE H4^{SV}
MILLAH MURRAH PRUE F12^{PV}
CONNELLY CONSENSUS 7229^{SV}
V A R GENERATION 2100^{PV}
SANDPOINT BLACKBIRD 8809[#]
NMMM240 MILLAH MURRAH PRUE M240^{SV}
CARRINGTON PARK TIME ON B7^{PV}
MILLAH MURRAH PRUE G271^{PV}
MILLAH MURRAH PRUE Y28[#]

August 2019 Angus Australia BREEDPLAN									
	Calv. Ease Direct	Calv. Ease Dtrs	Gest Lgth	Birth Wt. (kg)	200 Day (kg)	400 Day (kg)	600 Day (kg)	Mat. Cow (kg)	Milk (kg)
EBV	+3.5	+2.3	-7.1	+3.4	+37	+63	+69	+54	+8
Acc	61%	50%	85%	74%	71%	70%	69%	64%	58%
Scrot. Size (cm)	Days to Calv.	Carc Wt. (kg)	EMA (sqcm)	Rib Fat (mm)	Rump Fat (mm)	RBY %	IMF %	NFI-F (kg/day)	Doc
+0.9	-5.3	+44	+8.0	+0.1	-1.5	+1.4	+1.5	+0.47	-
73%	43%	64%	63%	66%	63%	59%	62%	56%	-

Traits Observed: GL,CE,BWT,400WT(x2),SC,Scan(EMA,Rib,Rump,IMF),Genomics(CE,S-Step)

Selection Indexes			
Angus Breeding	Domestic	Heavy Grain	Heavy Grass
+\$96	+\$108	+\$93	+\$96

Heifer's calf with ideal credentials for heifer mating.

Purchaser: \$

54 MILLAH MURRAH PILOT P183^{PV}

Born: 8/08/2018 Ident: NMMP183 Regn: HBR
AMFU,CAFU,DDFU,NHFU



SITZ UPWARD 307R^{SV}
KOUPLS B&B IDENTITY[#]
B&B ERICA 605[#]
USA17264774 MUSGRAVE AVIATOR^{SV}
S A V FINAL ANSWER 0035[#]
MCATL FOREVER LADY 1429-138[#]
ALC FOREVER LADY R02S[#]
WAITARA VALLEY TEX[#]
HINGAIA 469[#]
HINGAIA 910[#]
NMMF6 MILLAH MURRAH BRENDA F6^{PV}
YTHANBRAE HENRY VIII U8^{SV}
MILLAH MURRAH BRENDA Y33[#]
MILLAH MURRAH BRENDA U121[#]

August 2019 Angus Australia BREEDPLAN									
	Calv. Ease Direct	Calv. Ease Dtrs	Gest Lgth	Birth Wt. (kg)	200 Day (kg)	400 Day (kg)	600 Day (kg)	Mat. Cow (kg)	Milk (kg)
EBV	+4.8	+3.4	-5.3	+0.8	+33	+67	+85	+61	+19
Acc	58%	41%	70%	75%	72%	71%	70%	65%	61%
Scrot. Size (cm)	Days to Calv.	Carc Wt. (kg)	EMA (sqcm)	Rib Fat (mm)	Rump Fat (mm)	RBY %	IMF %	NFI-F (kg/day)	Doc
+1.7	-2.1	+51	+8.7	+0.3	-1.7	+1.8	+1.2	-0.08	-
72%	42%	64%	63%	66%	62%	60%	62%	53%	-

Traits Observed: BWT,400WT(x2),SC,Scan(EMA,Rib,Rump,IMF),Genomics(CE,S-Step)

Selection Indexes			
Angus Breeding	Domestic	Heavy Grain	Heavy Grass
+\$99	+\$106	+\$94	+\$103

Full brother to the previous Lot. Outstanding calving ease expected.

Purchaser: \$



Nugget N266



Honey H159: granddam of Lot 55

58 MILLAH MURRAH CHISUM P134^{PV}

Born: 29/07/2018 Ident: NMMP134 Regn: HBR
AMFU,CAFU,DDFU,NHFU **MM**

S ALLIANCE 3313[#]
S CHISUM 6175^{PV}
S GLORIA 464[#]
USA17298481 S CHISUM 255^{SV}
SHIPWHEEL CHINOOK[#]
S BLOSSOM 0278[#]
S BLOSSOM 8378[#]
SCHURRTOP REALITY X723[#]
MATAURI REALITY 839[#]
MATAURI 06663[#]
NMMM301 MILLAH MURRAH FLOWER M301^{SV}
MILLAH MURRAH NEUTRON G159^F
MILLAH MURRAH FLOWER K173[#]
MILLAH MURRAH FLOWER H261^{SV}

August 2019 Angus Australia BREEDPLAN									
	Calv. Ease Direct	Calv. Ease Dtrs	Gest Lgth	Birth Wt. (kg)	200 Day (kg)	400 Day (kg)	600 Day (kg)	Mat. Cow (kg)	Milk (kg)
EBV	+4.1	+4.5	-7.8	+1.8	+43	+66	+83	+65	+16
Acc	55%	38%	84%	72%	68%	66%	65%	61%	55%
Scrot. Size (cm)	Days to Calv.	Carc Wt. (kg)	EMA (sqcm)	Rib Fat (mm)	Rump Fat (mm)	RBV %	IMF %	NFI-F (kg/day)	Doc
+3.0	-6.1	+40	+6.9	+2.4	+3.4	+0.7	+0.9	+0.48	-
68%	36%	59%	57%	61%	57%	54%	56%	48%	-

Traits Observed: GL,CE,BWT,400WT(x2),SC,Scan(EMA,Rib,Rump,IMF),Genomics(CE,S-Step)

Selection Indexes			
Angus Breeding	Domestic	Heavy Grain	Heavy Grass
+\$106	+\$108	+\$91	+\$110

A heifer's calf with lovely easy fleshing, typical of the 255 progeny. Bomb proof credentials for use in the heifer mating role.

Purchaser: \$



Lot 58: Chisum P134



H198: Dam of Lot 57

Purchaser: \$

57 MILLAH MURRAH CHISUM P124^{PV}

Born: 16/09/2018 Ident: NMMP124 Regn: APR
AMFU,CAFU,DDFU,NHFU **MM**

S ALLIANCE 3313[#]
S CHISUM 6175^{PV}
S GLORIA 464[#]
USA17298481 S CHISUM 255^{SV}
SHIPWHEEL CHINOOK[#]
S BLOSSOM 0278[#]
S BLOSSOM 8378[#]
TE MANIA BERKLEY B1^{PV}
TE MANIA EMPEROR E343^{PV}
TE MANIA LOWAN Z74^{PV}
NMMH198 MILLAH MURRAH H198^{SV}
BT EQUATOR 395M[#]
MILLAH MURRAH C135^{SV}
MILLAH MURRAH A150[#]

August 2019 Angus Australia BREEDPLAN									
	Calv. Ease Direct	Calv. Ease Dtrs	Gest Lgth	Birth Wt. (kg)	200 Day (kg)	400 Day (kg)	600 Day (kg)	Mat. Cow (kg)	Milk (kg)
EBV	+0.6	+3.0	+2.6	+1.9	+38	+72	+86	+63	+19
Acc	48%	47%	84%	73%	70%	67%	67%	65%	59%
Scrot. Size (cm)	Days to Calv.	Carc Wt. (kg)	EMA (sqcm)	Rib Fat (mm)	Rump Fat (mm)	RBV %	IMF %	NFI-F (kg/day)	Doc
+1.3	-4.3	+47	+5.9	+0.5	+1.5	+0.3	+0.9	+0.03	-
62%	39%	62%	59%	63%	59%	56%	58%	50%	-

Traits Observed: GL,BWT,400WT(x2),Genomics(CE,S-Step)

Selection Indexes			
Angus Breeding	Domestic	Heavy Grain	Heavy Grass
+\$93	+\$102	+\$80	+\$99

Youngest bull in the sale, in fact the youngest bull we have ever sold. Dam's only other son fetched \$12,000 as a yearling in 2017. Suitable for heifers.

Purchaser: \$

59 MILLAH MURRAH CHISUM P170^{PV}

Born: 4/08/2018 Ident: NMMP170 Regn: HBR
AMFU,CAFU,DDFU,NHFU



S ALLIANCE 3313#
S CHISUM 6175^{PV}
S GLORIA 464#
USA17298481 S CHISUM 255^{SV}
SHIPWHEEL CHINOOK#
S BLOSSOM 0278#
S BLOSSOM 8378#
BOOROOMOOKA THEO T030^{SV}
MILLAH MURRAH KLOONEY K42^{PV}
MILLAH MURRAH PRUE H4^{SV}
NMMM314 MILLAH MURRAH BEAC M314^{PV}
EF COMPLEMENT 8088^{PV}
MILLAH MURRAH BEAC K295^{SV}
MILLAH MURRAH BEAC G230^{PV}

August 2019 Angus Australia BREEDPLAN									
	Calv. Ease Direct	Calv. Ease Dtrs	Gest Lgth	Birth Wt. (kg)	200 Day (kg)	400 Day (kg)	600 Day (kg)	Mat. Cow (kg)	Milk (kg)
EBV	+0.9	+2.7	-3.2	+3.8	+47	+84	+98	+73	+17
Acc	54%	37%	84%	72%	68%	66%	65%	61%	54%
Scrot. Size (cm)	Days to Calv.	Carc Wt. (kg)	EMA (sqcm)	Rib Fat (mm)	Rump Fat (mm)	RBV %	IMF %	NFI-F (kg/day)	Doc
+1.6	-6.2	+58	+5.5	+2.0	+1.7	-0.2	+1.4	+0.28	-
68%	35%	59%	57%	61%	57%	54%	56%	48%	-

Traits Observed: GL,CE,BWT,400WT(x2),SC,Scan(EMA,Rib,Rump,IMF),Genomics(CE,S-Step)

Selection Indexes			
Angus Breeding	Domestic	Heavy Grain	Heavy Grass
+\$110	+\$113	+\$104	+\$111

Brilliant pedigree combination. Another heifer's calf and a bull suitable for use on heifers and cows alike. Last chance for early access to the Chisum 255 line.



Lot 59: Chisum P170



Abigail J26: Dam of Lot 63

Purchaser: \$

60 MILLAH MURRAH CAPITALIST P59^{PV}

Born: 9/02/2018 Ident: NMMP59 Regn: HBR
AMFU,CAFU,DDFU,NHFU



S A V FINAL ANSWER 0035#
CONNEALY CAPITALIST 028#
PRIDES PITA OF CONANGA 8821#
USA17666102 LD CAPITALIST 316^{SV}
C A FUTURE DIRECTION 5321#
LD DIXIE ERICA 2053#
LD DIXIE ERICA OAR 0853#
C A FUTURE DIRECTION 5321#
R/M IRONSTONE 4047#
B/R RUBY OF TIFFANY 5144#
NMMH35 MILLAH MURRAH ABIGAIL H35^{SV}
TC STOCKMAN 2164#
MILLAH MURRAH ABIGAIL F39^{PV}
MILLAH MURRAH ABIGAIL D21^{PV}

August 2019 Angus Australia BREEDPLAN									
	Calv. Ease Direct	Calv. Ease Dtrs	Gest Lgth	Birth Wt. (kg)	200 Day (kg)	400 Day (kg)	600 Day (kg)	Mat. Cow (kg)	Milk (kg)
EBV	+3.5	+1.6	-3.5	+2.0	+47	+81	+104	+90	+18
Acc	54%	48%	85%	75%	73%	70%	69%	66%	60%
Scrot. Size (cm)	Days to Calv.	Carc Wt. (kg)	EMA (sqcm)	Rib Fat (mm)	Rump Fat (mm)	RBV %	IMF %	NFI-F (kg/day)	Doc
+1.1	-0.8	+57	+9.1	+0.6	+0.5	+0.5	+2.0	+0.24	-13
66%	38%	63%	62%	65%	62%	58%	61%	52%	60%

Traits Observed: GL,BWT,200WT(x2),400WT(x2),DOC,Genomics(CE,S-Step)

Selection Indexes			
Angus Breeding	Domestic	Heavy Grain	Heavy Grass
+\$107	+\$109	+\$104	+\$110

Long thick topped bull with loads of eye appeal. His dam is a powerful cow descended from Abigail S104. Her three previous sons have sold to average \$14,000. An excellent all round prospect.

Purchaser: \$

61 MILLAH MURRAH COMMANDO P31^{PV}

Born: 2/02/2018 Ident: NMMP31 Regn: HBR
AMFU,CAFU,DDFU,NHFU



BASIN FRANCHISE P142#
EF COMPLEMENT 8088^{PV}
EF EVERELDA ENTENSE 6117#
USA17082311 EF COMMANDO 1366^{PV}
B/R AMBUSH 28#
RIVERBEND YOUNG LUCY W1470#
RIVERBEND YOUNG LUCY T1080#
HINGAIA 469#
MILLAH MURRAH KINGDOM K35^{PV}
MILLAH MURRAH FLOWER G41^{PV}
NMMM55 MILLAH MURRAH BRENDA M55^{PV}
SILVEIRAS CONVERSION 8064#
MILLAH MURRAH BRENDA J143^{SV}
MILLAH MURRAH BRENDA F20^{PV}

August 2019 Angus Australia BREEDPLAN									
	Calv. Ease Direct	Calv. Ease Dtrs	Gest Lgth	Birth Wt. (kg)	200 Day (kg)	400 Day (kg)	600 Day (kg)	Mat. Cow (kg)	Milk (kg)
EBV	-2.8	-1.6	-0.5	+6.9	+55	+98	+123	+104	+18
Acc	51%	48%	83%	72%	71%	69%	68%	64%	58%
Scrot. Size (cm)	Days to Calv.	Carc Wt. (kg)	EMA (sqcm)	Rib Fat (mm)	Rump Fat (mm)	RBV %	IMF %	NFI-F (kg/day)	Doc
+0.8	-7.1	+65	+10.6	+0.8	+1.2	+0.2	+1.0	-0.04	+0
64%	39%	63%	61%	64%	61%	58%	60%	52%	56%

Traits Observed: GL,BWT,200WT(x2),400WT(x2),Scan(EMA,Rib,Rump,IMF),DOC,Genomics(CE,S-Step)

Selection Indexes			
Angus Breeding	Domestic	Heavy Grain	Heavy Grass
+\$122	+\$113	+\$119	+\$122

Commando transmits amazing fleshing and thickness, P31 being a case in point. He has so much power over the top with extraordinary skin and carcass shape. Heifer's calf descended from the matriarch Brenda Y33.

Purchaser: \$

62 MILLAH MURRAH KINGDOM P61^{PV}

Born: 10/02/2018 Ident: NMMP61 Regn: HBR
AMFU,CAFU,DDFU,NHFU



WAITARA VALLEY TEX[#]
HINGAIA 469[#]
HINGAIA 910[#]

NMMK35 MILLAH MURRAH KINGDOM K35^{PV}

BT RIGHT TIME 24J[#]
MILLAH MURRAH FLOWER G41^{PV}
MILLAH MURRAH FLOWER C15^{SV}

TE MANIA BERKLEY B1^{PV}
TE MANIA EMPEROR E343^{PV}
TE MANIA LOWAN Z74^{PV}

NMMK56 MILLAH MURRAH ABIGAIL K56^{SV}

FORRES BENAUD B1^{PV}
MILLAH MURRAH ABIGAIL G8^{PV}
MILLAH MURRAH ABIGAIL D8^{SV}

August 2019 Angus Australia BREEDPLAN									
	Calv. Ease Direct	Calv. Ease Dtrs	Gest Lgth	Birth Wt. (kg)	200 Day (kg)	400 Day (kg)	600 Day (kg)	Mat. Cow (kg)	Milk (kg)
EBV	-3.8	-0.9	-3.0	+7.5	+52	+96	+127	+129	+9
Acc	56%	55%	85%	74%	71%	70%	70%	67%	61%
Scrot. Size (cm)	Days to Calv.	Carc Wt. (kg)	EMA (sqcm)	Rib Fat (mm)	Rump Fat (mm)	RBV %	IMF %	NFI-F (kg/day)	Doc
+1.3	-6.4	+61	+6.4	-1.2	-1.3	+0.6	+1.6	-0.37	+1
67%	47%	65%	64%	67%	64%	62%	63%	59%	59%

Trails Observed: GL,BWT,200WT(x2),400WT(x2),DOC,Genomics(CE,S-Step)

Selection Indexes			
Angus Breeding	Domestic	Heavy Grain	Heavy Grass
+\$122	+\$109	+\$133	+\$116

Kingdom length and power on display. Full brother fetched \$10,000 in 2017. Another direct descendant of the fabled Abigail S104 cow.

Purchaser: \$.....

63 MILLAH MURRAH LOCH UP P21^{PV}

Born: 31/01/2018 Ident: NMMP21 Regn: HBR
AMFU,CAFU,DDFU,NHFU



SITZ UPWARD 307R^{SV}
THOMAS UP RIVER 1614^{PV}
THOMAS CAROL 7595[#]

NMML133 MILLAH MURRAH LOCH UP L133^{PV}

TE MANIA EMPEROR E343^{PV}
MILLAH MURRAH BRENDA H49^{SV}
MILLAH MURRAH BRENDA E64^{PV}

BOOROOMOOKA NEUTRON A238^{PV}
MILLAH MURRAH NEUTRON E78^{PV}
MILLAH MURRAH FLOWER C85^{PV}

NMMJ26 MILLAH MURRAH ABIGAIL J26^{SV}

MILLAH MURRAH INFINITY D105^{PV}
MILLAH MURRAH ABIGAIL G51^{PV}
MILLAH MURRAH ABIGAIL C66^{SV}

August 2019 Angus Australia BREEDPLAN									
	Calv. Ease Direct	Calv. Ease Dtrs	Gest Lgth	Birth Wt. (kg)	200 Day (kg)	400 Day (kg)	600 Day (kg)	Mat. Cow (kg)	Milk (kg)
EBV	+3.3	+3.1	-7.8	+2.3	+49	+79	+105	+89	+21
Acc	50%	45%	85%	74%	71%	70%	70%	65%	56%
Scrot. Size (cm)	Days to Calv.	Carc Wt. (kg)	EMA (sqcm)	Rib Fat (mm)	Rump Fat (mm)	RBV %	IMF %	NFI-F (kg/day)	Doc
+1.9	-7.4	+66	-0.5	+0.5	+0.9	-1.1	+1.8	-0.25	+0
66%	37%	60%	61%	64%	61%	56%	60%	57%	59%

Trails Observed: GL,BWT,200WT(x2),400WT(x2),Scan(EMA,Rib,Rump,IMF),DOC,Genomics(CE,S-Step)

Selection Indexes			
Angus Breeding	Domestic	Heavy Grain	Heavy Grass
+\$107	+\$102	+\$107	+\$106

Lovely balanced young sire to suit the heifer or cow mating role. I keep mentioning this attribute as it's useful versatility in a year when everyone is looking to save a few dollars. Maternal brother fetched \$14,000 at last year's sale.

Purchaser: \$.....

64 MILLAH MURRAH LOCH UP P91^{PV}

Born: 20/03/2018 Ident: NMMP91 Regn: HBR
AMFU,CAFU,DDFU,NHFU



SITZ UPWARD 307R^{SV}
THOMAS UP RIVER 1614^{PV}
THOMAS CAROL 7595[#]

NMML133 MILLAH MURRAH LOCH UP L133^{PV}

TE MANIA EMPEROR E343^{PV}
MILLAH MURRAH BRENDA H49^{SV}
MILLAH MURRAH BRENDA E64^{PV}

DUNOON EVIDENT E614^{PV}
MILLAH MURRAH EVIDENT H105^{SV}
MILLAH MURRAH ABIGAIL Y79[#]

NMMK79 MILLAH MURRAH PRUE K79^{SV}

ARDROSSAN APOLLO D324^{PV}
MILLAH MURRAH PRUE G89^{PV}
MILLAH MURRAH PRUE E7^{PV}

August 2019 Angus Australia BREEDPLAN									
	Calv. Ease Direct	Calv. Ease Dtrs	Gest Lgth	Birth Wt. (kg)	200 Day (kg)	400 Day (kg)	600 Day (kg)	Mat. Cow (kg)	Milk (kg)
EBV	+0.0	+0.5	-4.5	+2.1	+45	+83	+102	+89	+20
Acc	50%	45%	74%	73%	73%	71%	71%	64%	54%
Scrot. Size (cm)	Days to Calv.	Carc Wt. (kg)	EMA (sqcm)	Rib Fat (mm)	Rump Fat (mm)	RBV %	IMF %	NFI-F (kg/day)	Doc
+1.9	-5.8	+70	+2.6	-0.7	-0.4	-0.9	+3.3	+0.25	+17
69%	38%	62%	62%	65%	62%	57%	61%	58%	61%

Trails Observed: BWT,200WT(x2),400WT(x2),DOC,Genomics(CE,S-Step)

Selection Indexes			
Angus Breeding	Domestic	Heavy Grain	Heavy Grass
+\$113	+\$107	+\$127	+\$105

Excellent type from one of my favourite cows in her year. K79 sold to Coolie Angus for \$20,000 at our 2017 female sale. Her three sons to date have sold to \$16,000. Another bull with the versatility to use over the whole herd.

Purchaser: \$.....

65 MILLAH MURRAH LOCH UP P16^{PV}

Born: 29/01/2018 Ident: NMMP16 Regn: HBR
AMFU,CAFU,DDFU,NHFU



SITZ UPWARD 307R^{SV}
THOMAS UP RIVER 1614^{PV}
THOMAS CAROL 7595[#]

NMML133 MILLAH MURRAH LOCH UP L133^{PV}

TE MANIA EMPEROR E343^{PV}
MILLAH MURRAH BRENDA H49^{SV}
MILLAH MURRAH BRENDA E64^{PV}

SCHURRTOP REALITY X723[#]
MATAURI REALITY 839[#]
MATAURI 06663[#]

NMMM81 MILLAH MURRAH FLOWER M81^{PV}

DUNOON EVIDENT E614^{PV}
MILLAH MURRAH FLOWER J140^{SV}
MILLAH MURRAH FLOWER F126^{PV}

August 2019 Angus Australia BREEDPLAN									
	Calv. Ease Direct	Calv. Ease Dtrs	Gest Lgth	Birth Wt. (kg)	200 Day (kg)	400 Day (kg)	600 Day (kg)	Mat. Cow (kg)	Milk (kg)
EBV	+0.1	+1.5	-3.2	+4.1	+51	+94	+123	+121	+19
Acc	51%	48%	84%	72%	71%	69%	69%	62%	55%
Scrot. Size (cm)	Days to Calv.	Carc Wt. (kg)	EMA (sqcm)	Rib Fat (mm)	Rump Fat (mm)	RBV %	IMF %	NFI-F (kg/day)	Doc
+4.6	-6.3	+68	+2.0	-0.3	-0.8	-0.3	+2.6	+0.09	+9
65%	39%	60%	61%	64%	61%	57%	60%	57%	59%

Trails Observed: GL,BWT,200WT(x2),400WT(x2),Scan(EMA,Rib,Rump,IMF),DOC,Genomics(CE,S-Step)

Selection Indexes			
Angus Breeding	Domestic	Heavy Grain	Heavy Grass
+\$125	+\$112	+\$141	+\$116

Quality all rounder from the Flower G20/S110 line. Heifer's calf and again a bull suited for use across the herd.

Purchaser: \$.....



Lot 67: Command P51



Lot 66: Command P14

67 MILLAH MURRAH COMMAND P51^{SV}

Born: 7/02/2018 Ident: NMMP51 Regn: APR
AMFU,CAFU,DDFU,NHFU



EF COMPLEMENT 8088^{PV}
EF COMMANDO 1366^{PV}
RIVERBEND YOUNG LUCY W1470[#]
USA18219911 BALDRIDGE COMMAND C036^{PV}
HOOVER DAM[#]
BALDRIDGE BLACKBIRD A030[#]
BALDRIDGE BLACKBIRD X89[#]
TE MANIA UNLIMITED U3271[#]
HIGHLANDER OF STERN AB[#]
STERN 2664[#]
NMMG59 MILLAH MURRAH G59^{SV}
CRUSADER OF STERN AB[#]
MILLAH MURRAH A198^{SV}
MILLAH MURRAH W177[#]

August 2019 Angus Australia BREEDPLAN									
	Calv. Ease Direct	Calv. Ease Dtrs	Gest Lgth	Birth Wt. (kg)	200 Day (kg)	400 Day (kg)	600 Day (kg)	Mat. Cow (kg)	Milk (kg)
EBV	+3.9	+2.3	-5.0	+3.9	+41	+70	+88	+80	+14
Acc	49%	46%	85%	74%	71%	69%	68%	65%	58%
Scrot. Size (cm)	Days to Calv.	Carc Wt. (kg)	EMA (sqcm)	Rib Fat (mm)	Rump Fat (mm)	RBV %	IMF %	NFI-F (kg/day)	Doc
+0.2	-3.9	+46	+8.4	+0.3	+1.4	+0.3	+1.8	+0.67	+16
63%	37%	62%	60%	64%	60%	56%	59%	50%	57%

Traits Observed: GL,BWT,200WT(x2),400WT(x2),Scan(EMA,Rib,Rump,IMF),DOC,Genomics(CE,S-Step)

Selection Indexes			
Angus Breeding	Domestic	Heavy Grain	Heavy Grass
+\$104	+\$105	+\$101	+\$105

Awesome thickness in an early maturing model based on Stern genetics. A bull to put some real meat into the herd. As with the previous Lot, the data suggests he will be OK on heifers if required.

Purchaser: \$

66 MILLAH MURRAH COMMAND P14^{PV}

Born: 28/01/2018 Ident: NMMP14 Regn: HBR
AMFU,CAFU,DDFU,NHFU



EF COMPLEMENT 8088^{PV}
EF COMMANDO 1366^{PV}
RIVERBEND YOUNG LUCY W1470[#]
USA18219911 BALDRIDGE COMMAND C036^{PV}
HOOVER DAM[#]
BALDRIDGE BLACKBIRD A030[#]
BALDRIDGE BLACKBIRD X89[#]
SITZ UPWARD 307R^{SV}
THOMAS UP RIVER 1614^{PV}
THOMAS CAROL 7595[#]
NMML66 MILLAH MURRAH ABIGAIL L66^{SV}
BOOROOMOOKA NEUTRON A238^{PV}
MILLAH MURRAH ABIGAIL F7^{PV}
MILLAH MURRAH ABIGAIL A65^{PV}

August 2019 Angus Australia BREEDPLAN									
	Calv. Ease Direct	Calv. Ease Dtrs	Gest Lgth	Birth Wt. (kg)	200 Day (kg)	400 Day (kg)	600 Day (kg)	Mat. Cow (kg)	Milk (kg)
EBV	+4.7	+3.4	-10.1	+2.9	+57	+101	+123	+88	+18
Acc	48%	44%	83%	74%	71%	69%	67%	64%	56%
Scrot. Size (cm)	Days to Calv.	Carc Wt. (kg)	EMA (sqcm)	Rib Fat (mm)	Rump Fat (mm)	RBV %	IMF %	NFI-F (kg/day)	Doc
+1.9	-6.6	+72	+7.5	+2.2	+3.2	-0.2	+1.5	+0.35	+9
62%	34%	61%	59%	63%	60%	56%	59%	48%	57%

Traits Observed: GL,BWT,200WT(x2),400WT(x2),Scan(EMA,Rib,Rump,IMF),DOC,Genomics(CE,S-Step)

Selection Indexes			
Angus Breeding	Domestic	Heavy Grain	Heavy Grass
+\$141	+\$132	+\$138	+\$141

These Command sons take the term "thick" to a new level. Early maturing and incredibly dense, P14 oozes all the attributes traditionally associated with the Angus breed. He's got fleshing ability and doing ease to burn. The data suggests he will be fine over heifers, but it might be wise to sample him first, he is just so broad.

Purchaser: \$

68 MILLAH MURRAH COMMAND P65^{SV}

Born: 11/02/2018 Ident: NMMP65 Regn: HBR
AMFU,CAFU,DDFU,NHFU



EF COMPLEMENT 8088^{PV}
EF COMMANDO 1366^{PV}
RIVERBEND YOUNG LUCY W1470[#]
USA18219911 BALDRIDGE COMMAND C036^{PV}
HOOVER DAM[#]
BALDRIDGE BLACKBIRD A030[#]
BALDRIDGE BLACKBIRD X89[#]
TE MANIA UNLIMITED U3271[#]
HIGHLANDER OF STERN AB[#]
STERN 2664[#]
NMMG54 MILLAH MURRAH PRUE G54^{PV}
CRUSADER OF STERN AB[#]
MILLAH MURRAH PRUE C48^{SV}
MILLAH MURRAH PRUE Y68[#]

August 2019 Angus Australia BREEDPLAN									
	Calv. Ease Direct	Calv. Ease Dtrs	Gest Lgth	Birth Wt. (kg)	200 Day (kg)	400 Day (kg)	600 Day (kg)	Mat. Cow (kg)	Milk (kg)
EBV	+1.8	+1.3	-3.8	+3.6	+44	+85	+103	+84	+20
Acc	50%	46%	84%	74%	71%	70%	68%	65%	59%
Scrot. Size (cm)	Days to Calv.	Carc Wt. (kg)	EMA (sqcm)	Rib Fat (mm)	Rump Fat (mm)	RBV %	IMF %	NFI-F (kg/day)	Doc
-0.4	-2.4	+50	+6.1	-0.1	+0.2	+0.1	+1.7	+0.31	+37
63%	37%	62%	61%	64%	61%	57%	60%	50%	58%

Traits Observed: GL,BWT,200WT(x2),400WT(x2),DOC,Genomics(CE,S-Step)

Selection Indexes			
Angus Breeding	Domestic	Heavy Grain	Heavy Grass
+\$104	+\$108	+\$101	+\$106

Command and Stern combine again in a very similar pedigree to the previous Lot. OK to use on heifers if required.

Purchaser: \$

69 MILLAH MURRAH PROCEED P97^{PV}

Born: 24/03/2018 Ident: NMMP97 Regn: HBR
AMFU,CAFU,DDFU,NHFU



G A R PROGRESS^{SV}
H P C A PROCEED[#]
G A R 28 AMBUSH L119[#]

NMML237 MILLAH MURRAH PROCEED L237^{PV}

TE MANIA EMPEROR E343^{PV}
MILLAH MURRAH FLOWER H202^{SV}
MILLAH MURRAH FLOWER F199^{PV}
K C F BENNETT PERFORMER[#]
COONAMBLE HECTOR H249^{SV}
COONAMBLE E9^{PV}

NMMM4 MILLAH MURRAH PRUE M4^{SV}

INNESDALE CARBINE C31^{SV}
MILLAH MURRAH PRUE F141^{PV}
MILLAH MURRAH C57^{SV}

August 2019 Angus Australia BREEDPLAN									
Calv. Ease Direct	Calv. Ease Dtrs	Gest Lgth	Birth Wt. (kg)	200 Day (kg)	400 Day (kg)	600 Day (kg)	Mat. Cow (kg)	Milk (kg)	
EBV	-1.4	-0.2	-4.6	+5.9	+52	+88	+123	+120	+14
Acc	45%	45%	69%	69%	68%	66%	66%	61%	54%
Scrot. Size (cm)	Days to Calv.	Carc Wt. (kg)	EMA (sqcm)	Rib Fat (mm)	Rump Fat (mm)	RBV %	IMF %	NFI-F (kg/day)	Doc
+1.6	-3.3	+71	+6.7	-0.3	-2.5	+1.4	+1.7	+0.07	+5
61%	35%	59%	57%	61%	58%	54%	56%	49%	50%

Traits Observed: BWT,200WT(x2),400WT(x2),DOC,Genomics(CE,S-Step)

Selection Indexes

Angus Breeding	Domestic	Heavy Grain	Heavy Grass
+\$116	+\$106	+\$125	+\$113

First calf to sell from the \$190k Australasian record priced Angus animal Prue M4. 2nd youngest bull in his contemporary group and a stylish animal to kick off Prue's career.



Prue M4: Dam of Lot 69



Lot 69: Proceed P97

Purchaser: \$.....



LD Capitalist: Sire of Lot 70



Lot 70: Capitalist P77

70 MILLAH MURRAH CAPITALIST P77^{PV}

Born: 26/02/2018 Ident: NMMP77 Regn: HBR
AMFU,CAFU,DDFU,NHFU



S A V FINAL ANSWER 0035[#]
CONNEALY CAPITALIST 028[#]
PRIDES PITA OF CONANGA 8821[#]
USA17666102 LD CAPITALIST 316^{SV}
C A FUTURE DIRECTION 5321[#]
LD DIXIE ERICA 2053[#]
LD DIXIE ERICA OAR 0853[#]
TE MANIA BERKLEY B1^{PV}
TE MANIA EMPEROR E343^{PV}
TE MANIA LOWAN Z74^{PV}
NMMH62 MILLAH MURRAH PRUE H62^{SV}
MILLAH MURRAH WOODY W100[#]
MILLAH MURRAH PRUE E107^{PV}
MILLAH MURRAH PRUE Y140[#]

August 2019 Angus Australia BREEDPLAN									
Calv. Ease Direct	Calv. Ease Dtrs	Gest Lgth	Birth Wt. (kg)	200 Day (kg)	400 Day (kg)	600 Day (kg)	Mat. Cow (kg)	Milk (kg)	
EBV	+2.4	+1.1	-3.3	+2.5	+41	+72	+86	+67	+14
Acc	55%	49%	74%	74%	73%	71%	69%	65%	59%
Scrot. Size (cm)	Days to Calv.	Carc Wt. (kg)	EMA (sqcm)	Rib Fat (mm)	Rump Fat (mm)	RBV %	IMF %	NFI-F (kg/day)	Doc
+0.2	-2.5	+56	+7.8	+2.1	+0.0	-0.4	+2.6	+0.49	-3
66%	40%	64%	62%	65%	62%	58%	61%	52%	61%

Traits Observed: BWT,200WT(x2),400WT(x2),DOC,Genomics(CE,S-Step)

Selection Indexes

Angus Breeding	Domestic	Heavy Grain	Heavy Grass
+\$98	+\$103	+\$99	+\$98

Loads of breed character exhibited here. From the same dam as the \$28,000 Lincoln L119 who has sons in this sale. Ideally suited for use over heifers.

Purchaser: \$.....

71 MILLAH MURRAH COMMANDO P70^{PV}

Born: 16/02/2018 Ident: NMMP70 Regn: HBR
AMFU,CAFU,DDFU,NHFU



BASIN FRANCHISE P142[#]
EF COMPLEMENT 8088^{PV}
EF EVERELDA ENTENSE 6117[#]
USA17082311 EF COMMANDO 1366^{PV}
B/R AMBUSH 28[#]
RIVERBEND YOUNG LUCY W1470[#]
RIVERBEND YOUNG LUCY T1080[#]
MILLAH MURRAH HIGHLANDER G18^{SV}
MILLAH MURRAH JARDINE J219^{SV}
MILLAH MURRAH FLOWER G173^{PV}
NMMM162 MILLAH MURRAH PRUE M162^{PV}
MILLAH MURRAH DOC F159^{PV}
MILLAH MURRAH PRUE K70^{SV}
MILLAH MURRAH PRUE F26^{PV}

August 2019 Angus Australia BREEDPLAN									
	Calv. Ease Direct	Calv. Ease Dtrs	Gest Lgth	Birth Wt. (kg)	200 Day (kg)	400 Day (kg)	600 Day (kg)	Mat. Cow (kg)	Milk (kg)
EBV	+4.1	+3.6	-9.4	+1.8	+45	+82	+106	+79	+20
<i>Acc</i>	47%	45%	84%	71%	69%	67%	66%	61%	56%
Scrot. Size (cm)	Days to Calv.	Carc Wt. (kg)	EMA (sqcm)	Rib Fat (mm)	Rump Fat (mm)	RBY %	IMF %	NFI-F (kg/day)	Doc
+1.0	-4.8	+60	+4.5	+1.8	+1.4	-0.6	+1.8	+0.32	-8
62%	35%	60%	59%	62%	59%	55%	58%	49%	53%

Traits Observed: GL,BWT,200WT(x2),400WT(x2),DOC,Genomics(CE,S-Step)

Selection Indexes			
Angus Breeding	Domestic	Heavy Grain	Heavy Grass
+\$115	+\$110	+\$112	+\$115

Ultra safe bull for use over heifers, with adequate growth for the cow job as well. Heifer's calf.

Purchaser: \$

72 MILLAH MURRAH KLOONEY P83^{PV}

Born: 3/03/2018 Ident: NMMP83 Regn: HBR
AMFU,CAFU,DDFU,NHFU



B/R NEW DESIGN 036[#]
BOOROOMOOKA THEO T030^{SV}
BOOROOMOOKA QUAIN T Q34+95[#]
NMMK42 MILLAH MURRAH KLOONEY K42^{PV}
TE MANIA EMPEROR E343^{PV}
MILLAH MURRAH PRUE H4^{SV}
MILLAH MURRAH PRUE F12^{PV}
TE MANIA BARTEL B219^{PV}
DUNOON EVIDENT E614^{PV}
DUNOON ELSA B681^{SV}
NMMH101 MILLAH MURRAH ELA H101^{SV}
LAWSON'S DINKY-DI Z191^{SV}
MILLAH MURRAH ELA E76^{PV}
MILLAH MURRAH ELA A204[#]

August 2019 Angus Australia BREEDPLAN									
	Calv. Ease Direct	Calv. Ease Dtrs	Gest Lgth	Birth Wt. (kg)	200 Day (kg)	400 Day (kg)	600 Day (kg)	Mat. Cow (kg)	Milk (kg)
EBV	+1.8	+0.0	-4.6	+1.8	+36	+70	+88	+79	+19
<i>Acc</i>	58%	56%	85%	75%	73%	71%	72%	67%	62%
Scrot. Size (cm)	Days to Calv.	Carc Wt. (kg)	EMA (sqcm)	Rib Fat (mm)	Rump Fat (mm)	RBY %	IMF %	NFI-F (kg/day)	Doc
+1.9	-6.1	+46	+5.4	+0.1	-1.7	+0.6	+2.4	+0.22	+12
68%	47%	66%	65%	68%	65%	61%	64%	59%	60%

Traits Observed: GL,BWT,200WT(x2),400WT(x2),DOC,Genomics(CE,S-Step)

Selection Indexes			
Angus Breeding	Domestic	Heavy Grain	Heavy Grass
+\$108	+\$105	+\$118	+\$101

Some beautiful females behind this bull. He comes from the same maternal line as Kruse Time with A204 the great grand dam. Safe for heifers.

Purchaser: \$

73 MILLAH MURRAH PATRIARCH P98^{PV}

Born: 26/03/2018 Ident: NMMP98 Regn: HBR
AMFU,CAFU,DDFU,NHFU



HIGHLANDER OF STERN AB[#]
MILLAH MURRAH HIGHLANDER G18^{SV}
MILLAH MURRAH PRUE D85^{PV}
NMML262 MILLAH MURRAH HIGHLANDER L262^{PV}
CARABAR DOCKLANDS D62^{PV}
MILLAH MURRAH ABIGAIL J315^{PV}
MILLAH MURRAH ABIGAIL Y116[#]
TE MANIA BERKLEY B1^{PV}
TE MANIA EMPEROR E343^{PV}
TE MANIA LOWAN Z74^{PV}
NMMJ11 MILLAH MURRAH FLOWER J11^{SV}
FORRES BENAUD B1^{PV}
MILLAH MURRAH FLOWER G67^{PV}
MILLAH MURRAH FLOWER E128^{PV}

August 2019 Angus Australia BREEDPLAN									
	Calv. Ease Direct	Calv. Ease Dtrs	Gest Lgth	Birth Wt. (kg)	200 Day (kg)	400 Day (kg)	600 Day (kg)	Mat. Cow (kg)	Milk (kg)
EBV	+0.9	-0.9	-6.9	+6.4	+56	+95	+131	+114	+13
<i>Acc</i>	45%	46%	71%	68%	67%	65%	65%	62%	55%
Scrot. Size (cm)	Days to Calv.	Carc Wt. (kg)	EMA (sqcm)	Rib Fat (mm)	Rump Fat (mm)	RBY %	IMF %	NFI-F (kg/day)	Doc
+4.0	-7.3	+75	+5.4	-1.1	-1.0	+1.6	+1.3	+0.36	-3
62%	39%	59%	57%	61%	58%	54%	57%	51%	49%

Traits Observed: BWT,200WT(x2),400WT(x2),DOC,Genomics(CE,S-Step)

Selection Indexes			
Angus Breeding	Domestic	Heavy Grain	Heavy Grass
+\$140	+\$122	+\$150	+\$134

Youngest bull in his contemporary group displaying plenty of grunt for a bull so deep in the sale. Lack of age is the only thing keeping him out of the front of the catalogue. Dam's 1st three sons fetched \$16,000 each.

Purchaser: \$



Highlander L262: Sire of Lots 73 & 74



Ela E76, granddam of Lot 72

Purchaser: \$

74 MILLAH MURRAH PATRIARCH P96^{PV}

Born: 23/03/2018 Ident: NMMP96 Regn: HBR
AMFU,CAFU,DDFU,NHFU



HIGHLANDER OF STERN AB[#]
MILLAH MURRAH HIGHLANDER G18^{SV}
MILLAH MURRAH PRUE D85^{PV}
NMML262 MILLAH MURRAH HIGHLANDER L262^{PV}
CARABAR DOCKLANDS D62^{PV}
MILLAH MURRAH ABIGAIL J315^{PV}
MILLAH MURRAH ABIGAIL Y116[#]
C A FUTURE DIRECTION 5321[#]
R/M IRONSTONE 4047[#]
B/R RUBY OF TIFFANY 5144[#]
NMMH68 MILLAH MURRAH FLOWER H68^{PV}
BON VIEW NEW DESIGN 1407[#]
MILLAH MURRAH FLOWER C53^{SV}
MILLAH MURRAH FLOWER Y133[#]

August 2019 Angus Australia BREEDPLAN									
	Calv. Ease Direct	Calv. Ease Dtrs	Gest Lgth	Birth Wt. (kg)	200 Day (kg)	400 Day (kg)	600 Day (kg)	Mat. Cow (kg)	Milk (kg)
EBV	-4.1	-1.9	-3.8	+6.2	+52	+90	+125	+122	+21
Acc	45%	46%	72%	68%	68%	65%	66%	63%	56%
Scrot. Size (cm)	Days to Calv.	Carc Wt. (kg)	EMA (sqcm)	Rib Fat (mm)	Rump Fat (mm)	RBV %	IMF %	NFI-F (kg/day)	Doc
+5.0	-4.1	+69	+4.4	-2.5	-1.6	+1.8	+1.2	-0.05	-10
61%	38%	60%	58%	62%	59%	55%	58%	51%	50%

Traits Observed: BWT,200WT(x2),400WT(x2),DOC,Genomics(CE,S-Step)

Selection Indexes			
Angus Breeding	Domestic	Heavy Grain	Heavy Grass
+\$108	+\$101	+\$113	+\$106

Later maturing type from the Flower G20/S110 line. Dam is a massive volume cow. Her most recent daughter, by Klooney, joined our ET programme this year. This is her 1st son.

Purchaser:\$.....

75 MILLAH MURRAH COMMAND P63^{SV}

Born: 10/02/2018 Ident: NMMP63 Regn: HBR
AMFU,CAFU,DDFU,NHFU



EF COMPLEMENT 8088^{PV}
EF COMMANDO 1366^{PV}
RIVERBEND YOUNG LUCY W1470[#]
USA18219911 BALDRIDGE COMMAND C036^{PV}
HOOVER DAM[#]
BALDRIDGE BLACKBIRD A030[#]
BALDRIDGE BLACKBIRD X89[#]
TE MANIA UNLIMITED U3271[#]
HIGHLANDER OF STERN AB[#]
STERN 2664[#]
NMMG53 MILLAH MURRAH PRUE G53^{PV}
CRUSADER OF STERN AB[#]
MILLAH MURRAH PRUE C48^{SV}
MILLAH MURRAH PRUE Y68[#]

August 2019 Angus Australia BREEDPLAN									
	Calv. Ease Direct	Calv. Ease Dtrs	Gest Lgth	Birth Wt. (kg)	200 Day (kg)	400 Day (kg)	600 Day (kg)	Mat. Cow (kg)	Milk (kg)
EBV	+0.9	+0.0	-4.0	+5.8	+51	+87	+115	+110	+15
Acc	50%	46%	84%	73%	71%	69%	67%	64%	59%
Scrot. Size (cm)	Days to Calv.	Carc Wt. (kg)	EMA (sqcm)	Rib Fat (mm)	Rump Fat (mm)	RBV %	IMF %	NFI-F (kg/day)	Doc
-0.3	-0.4	+55	+6.6	-1.6	-1.6	+1.1	+1.8	-0.17	+18
64%	37%	62%	60%	63%	60%	56%	59%	49%	58%

Traits Observed: GL,BWT,200WT(x2),400WT(x2),DOC,Genomics(CE,S-Step)

Selection Indexes			
Angus Breeding	Domestic	Heavy Grain	Heavy Grass
+\$106	+\$106	+\$108	+\$107

The Command x Stern genetics combination delivers so much thickness and volume in an earlier maturity pattern. Lovely young bull to round out the offering. Dam has had five sons previously, all making the sale to a top of \$16,000.

Purchaser:\$.....



REFERENCE SIRE (NEW)

Reference Sire

MILLAH MURRAH LOCH UP L133^{PV}

Ident: NMML133

Calved: 14/03/2015

Registration Level: HBR

Genetic Status: AMF,CAF,DDF,NHF

CONNEALY ONWARD[#]
 SITZ UPWARD 307R^{SV}
 SITZ HENRIETTA PRIDE 81M[#]
USA17091363 THOMAS UP RIVER 1614^{PV}
 RITO 112 OF 2536 RITO 616[#]
 THOMAS CAROL 7595[#]
 THOMAS CAROL 1246[#]
 TE MANIA BERKLEY B1^{PV}
 TE MANIA EMPEROR E343^{PV}
 TE MANIA LOWAN Z74^{PV}
NMMH49 MILLAH MURRAH BRENDA H49^{SV}
 BT EQUATOR 395M[#]
 MILLAH MURRAH BRENDA E64^{PV}
 MILLAH MURRAH BRENDA A32^{PV}

Notes: Loch Up is the \$85,000 high selling bull of the Angus breed in 2016 to Ascot Angus. His progeny exhibit exceptional weight for age from their massive depth of rib and heavy bone type. Loch Up sons are robust bulls, with hardy constitution and excellent structural makeup. They are ideal cattle for tough environments. Loch Up comes from an outstanding maternal line descending from matriarch cow Brenda Y33, through Brenda H49 who many considered the best Emperor heifer of her drop which included Klooney's dam Prue H4. Top picks include Lots 3, 4 & 5.

Mid-July 2019 Angus Australia BREEDPLAN									
	Calv. Ease Direct	Calv. Ease Dtrs	Gest Lgth	Birth Wt. (kg)	200 Day (kg)	400 Day (kg)	600 Day (kg)	Mat. Cow (kg)	Milk (kg)
EBV	-1.7	+0.7	-5.5	+5.3	+61	+103	+131	+110	+20
Acc	77%	54%	98%	98%	97%	97%	96%	83%	69%
Scrot. Size (cm)	Days to Calv.	Carc Wt. (kg)	EMA (sqcm)	Rib Fat (mm)	Rump Fat (mm)	RBV %	IMF %	NFI-F (kg/day)	Doc
+2.2	-6.1	+82	+1.6	-1.5	-1.9	+0.3	+1.9	-0.50	+16
96%	51%	79%	84%	84%	82%	76%	82%	82%	96%

Traits Observed: BWT,200WT,400WT,SC,Scan(EMA,Rib,Rump,IMF),DOC,Genomics(CE,S-Step)

Bplan Stats: Number of Herds: 68, Prog Analysed: 1024, Genomic Prog: 172

Selection Index Values	Angus Breeding	Domestic	Heavy Grain	Heavy Grass
	+\$122	+\$116	+\$130	+\$118



Loch Up L133's dam Brenda H49 at two years



Loch Up at two years



Lot 3, Loch Up P4

REFERENCE SIRE (NEW)

Reference
Sire

LD CAPITALIST 316^{SV}

Ident: USA17666102

Calved: 26/01/2013

Registration Level: HBR

Genetic Status: AMF,CAF,DDF,NHF

SITZ TRAVELER 8180#
 S A V FINAL ANSWER 0035#
 S A V EMULOUS 8145#
USA16752262 CONNEALY CAPITALIST 028#
 C R A BEXTOR 872 5205 608#
 PRIDES PITA OF CONANGA 8821#
 PRIDES TRAV OF CONANGA 6499#
 G A R PRECISION 1680#
 C A FUTURE DIRECTION 5321#
 C A MISS POWER FIX 308#
USA14407230 LD DIXIE ERICA 2053#
 LD ROYCE ONAROLL 810#
 LD DIXIE ERICA OAR 0853#
 DIXIE ERICA OF R R 8553#

Notes: Capitalist is a crowd favourite for Australian visitors to the US in recent years. I inspected him in 2017 & 2018. Capitalist is structurally very well made, displaying a strong B category muscle pattern in a moderate frame. We mated him to generate greater power in his progeny with top picks including Lots 14 & 47.

Mid-July 2019 Angus Australia BREEDPLAN									
	Calv. Ease Direct	Calv. Ease Dtrs	Gest Lgth	Birth Wt. (kg)	200 Day (kg)	400 Day (kg)	600 Day (kg)	Mat. Cow (kg)	Milk (kg)
EBV	+4.8	+3.2	-3.8	+1.9	+53	+98	+116	+68	+17
Acc	83%	52%	99%	99%	98%	95%	87%	82%	76%
Scrot. Size (cm)	Days to Calv.	Carc Wt. (kg)	EMA (sqcm)	Rib Fat (mm)	Rump Fat (mm)	RBV %	IMF %	NFI-F (kg/day)	Doc
+1.5	-2.4	+75	+8.4	+1.9	+1.2	-0.3	+2.0	+0.25	-14
86%	46%	83%	80%	82%	77%	75%	79%	60%	95%

Traits Observed: Genomics(CE,S-Step)

Bplan Stats: Number of Herds: 128, Prog Analysed: 1573, Genomic Prog: 169

Selection Index Values	Angus Breeding	Domestic	Heavy Grain	Heavy Grass
		+\$125	+\$126	+\$122



Lot 14, Capitalist P56 at 17 months



Lot 47, Capitalist P180 at 11 months



LD Capitalist 316

REFERENCE SIRE (NEW)

S CHISUM 255^{SV}

Ident: USA17298481


Calved: 15/03/2012

Registration Level: HBR

Genetic Status: AMF,CAF,DDF,NHF

PAWS UP ALLIANCE 9561[#]
 S ALLIANCE 3313[#]
 PAWS UP 9048 EMULATION EXT[#]
USA15511451 S CHISUM 6175^{PV}
 S ECLIPSE 169[#]
 S GLORIA 464[#]
 S GLORIA 209[#]
 H A IMAGE MAKER 0415[#]
 SHIPWHEEL CHINOOK[#]
 APEX ERISKAY 5506[#]
USA16661905 S BLOSSOM 0278[#]
 R&S EXPEDITION 1404[#]
 S BLOSSOM 8378[#]
 S BLOSSOM 4190[#]

Notes: Dimity and I found Chisum 255 in 2016. He had the best inspection of any bull we have seen in the US. We visited the Spickler herd in North Dakota the day after weaning and saw nearly 300 cows and all their calves at close quarters. The dam, Blossom 0278, stood out in a strong and functional cow herd. Her progeny were exceptional. Inspected again in 2017 & 2018, Chisum 255 retains splendid structure and has passed scrutiny by several of Australia's toughest judges. Chisum 255 presents an outstanding new maternal line with plenty of weight and carcass shape in his calves. Only 500 straws of semen came to Australia. The yearling bulls in this sale are the only access to Chisum 255 in 2019. Pick Lots include 37 & 38.

	Mid-July 2019 Angus Australia BREEDPLAN								
	Calv. Ease Direct	Calv. Ease Dtrs	Gest Lgth	Birth Wt. (kg)	200 Day (kg)	400 Day (kg)	600 Day (kg)	Mat. Cow (kg)	Milk (kg)
EBV	+1.4	+3.8	-2.9	+2.9	+53	+88	+106	+60	+20
Acc	69%	48%	96%	94%	89%	83%	81%	78%	76%
Scrot. Size (cm)	Days to Calv.	Carc Wt. (kg)	EMA (sqcm)	Rib Fat (mm)	Rump Fat (mm)	RBV %	IMF %	NFI-F (kg/day)	Doc
+1.9	-4.9	+63	+7.6	+0.3	+1.6	+1.0	+0.2	+0.17	-
73%	43%	78%	72%	73%	66%	67%	69%	55%	-

Traits Observed: Genomics(CE,S-Step)

Bplan Stats: Number of Herds: 8, Prog Analysed: 96, Genomic Prog: 36

Selection Index Values	Angus Breeding	Domestic	Heavy Grain	Heavy Grass
		+\$113	+\$119	+\$93



S Blossom 0278, dam of Spickler Chisum 255



Lot 37: Chisum P108 at 11 months



Spickler Chisum 255 at 5 years

REFERENCE SIRES (NEW)

EF COMMANDO 1366^{PV} Ident: USA17082311

Calved: 25/08/2011 Registration Level: HBR

Genetic Status: AMFU,CAFU,DDFU,NHFU
 C A FUTURE DIRECTION 5321#
 BASIN FRANCHISE P142#
 BASIN CHLOE 812L#
USA16198796 EF COMPLEMENT 8088^{PV}
 BR MIDLAND#
 EF EVERELDA ENTENSE 6117#
 H F EVERELDA ENTENSE 869#
 ROCKN D AMBUSH 1531#
 B/R AMBUSH 28#
 B/R RUBY OF TIFFANY 8250#
USA16543240 RIVERBEND YOUNG LUCY W1470#
 S S OBJECTIVE T510 0T26#
 RIVERBEND YOUNG LUCY T1080#
 B/R YOUNG LUCY 2118#

Mid-July 2019 Angus Australia BREEDPLAN									
	Calv. Ease Direct	Calv. Ease Dtrs	Gest Lgth	Birth Wt. (kg)	200 Day (kg)	400 Day (kg)	600 Day (kg)	Mat. Cow (kg)	Milk (kg)
EBV	+4.2	+4.2	-8.4	+2.7	+52	+95	+113	+69	+22
Acc	75%	58%	98%	97%	93%	92%	88%	84%	82%
Scrot. Size (cm)	Days to Calv.	Carc Wt. (kg)	EMA (sqcm)	Rib Fat (mm)	Rump Fat (mm)	RBV %	IMF %	NFI-F (kg/day)	Doc
-1.2	-4.5	+66	+10.5	+1.0	+0.4	+0.0	+2.3	+0.42	+0
84%	51%	85%	80%	83%	78%	78%	80%	64%	87%

Traits Observed: Genomics(S-Step)

Bplan Stats: Number of Herds: 35, Prog Analysed: 245, Genomic Prog: 56

Selection Index Values	Angus Breeding	Domestic	Heavy Grain	Heavy Grass
		+\$134	+\$130	+\$137

Notes: We were taken by Commando's exceptional carcase shape and easy fleshing when inspected in 2016, '17 & '18. A moderate framed bull, Commando has gained notice as a sire of sires in the US, with one of his sons, Baldrige Command, represented in this sale. Commando sons inherit phenomenal muscle expression, right along the top line from chine to loin and down through the ham. He is proving to be an excellent match up for bigger framed cows in the herd. Pick Lots include 12, 40 & 52.

BALDRIDGE COMMAND C036^{PV} Ident: USA18219911

Calved: 13/01/2015 Registration Level: HBR

Genetic Status: AMF,CAF,DDF,NHF
 BASIN FRANCHISE P142#
 EF COMPLEMENT 8088^{PV}
 EF EVERELDA ENTENSE 6117#
USA17082311 EF COMMANDO 1366^{PV}
 B/R AMBUSH 28#
 RIVERBEND YOUNG LUCY W1470#
 RIVERBEND YOUNG LUCY T1080#
 SYDGEN C C & 7#
 HOOVER DAM#
 ERICA OF ELLSTON C124#
USA17770899 BALDRIDGE BLACKBIRD A030#
 STYLES UPGRADE J59#
 BALDRIDGE BLACKBIRD X89#
 BALDRIDGE BLACKBIRD P160#

Mid-July 2019 Angus Australia BREEDPLAN									
	Calv. Ease Direct	Calv. Ease Dtrs	Gest Lgth	Birth Wt. (kg)	200 Day (kg)	400 Day (kg)	600 Day (kg)	Mat. Cow (kg)	Milk (kg)
EBV	+4.6	+3.3	-7.5	+2.7	+59	+106	+136	+89	+21
Acc	72%	44%	98%	97%	94%	92%	85%	79%	73%
Scrot. Size (cm)	Days to Calv.	Carc Wt. (kg)	EMA (sqcm)	Rib Fat (mm)	Rump Fat (mm)	RBV %	IMF %	NFI-F (kg/day)	Doc
-0.1	-1.0	+76	+12.2	-2.5	-3.6	+2.3	+2.3	+0.52	+23
78%	39%	80%	74%	78%	72%	71%	74%	54%	90%

Traits Observed: Genomics(CE,S-Step)

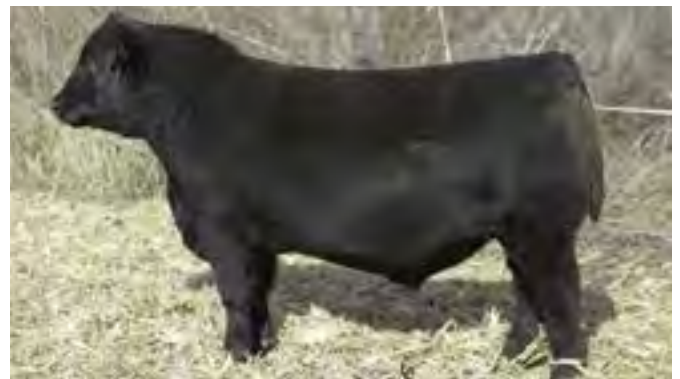
Bplan Stats: Number of Herds: 40, Prog Analysed: 327, Genomic Prog: 143

Selection Index Values	Angus Breeding	Domestic	Heavy Grain	Heavy Grass
		+\$150	+\$141	+\$162

Notes: Easily confused with his dad, Baldrige Command is a sire that has seen heavy usage in Australia over the past couple of years. Command takes his father's thickness and carcase expression to fairly extreme levels, without losing softness. Early maturing animals, the Command sons in this sale are ideal for moderating, thickening and adding do-ability to the herd. His daughters coming through the system look exceptional. Pick Lot 66.



Lot 12, Commando Son, Paratrooper P15



Baldrige Command



Lot 52, Commando P154 at 11 months



Lot 67 Command P51

REFERENCE SIRE (RETURNING)

MUSGRAVE AVIATOR^{SV}

Ident: USA17264774

Calved: 30/01/2012

Registration Level: HBR

Genetic Status: AMFU,CAFU,DDF,NHFU

CONNEALY ONWARD#
SITZ UPWARD 307R^{SV}
SITZ HENRIETTA PRIDE 81M#

USA16710463 KOUPALS B&B IDENTITY#
G A R EXALTATION 3144#
B&B ERICA 605#
B&B ERICA 4064#

SITZ TRAVELER 8180#
S A V FINAL ANSWER 0035#
S A V EMULOUS 8145#

USA16483505 MCATL FOREVER LADY 1429-138#
LEACHMAN RIGHT TIME^{SV}
ALC FOREVER LADY R02S#
ALC FOREVER LADY K14P#



Musgrave Aviator



Lot 53, Aviator son, Pilot P151

Mid-July 2019 Angus Australia BREEDPLAN

	Calv. Ease Direct	Calv. Ease Dtrs	Gest Lgth	Birth Wt. (kg)	200 Day (kg)	400 Day (kg)	600 Day (kg)	Mat. Cow (kg)	Milk (kg)	
EBV	+5.2	+3.4	-4.6	-1.3	+39	+74	+76	+25	+21	
Acc	69%	45%	79%	92%	89%	89%	86%	82%	79%	
	Scrot. Size (cm)	Days to Calv.	Carc Wt. (kg)	EMA (sqcm)	Rib Fat (mm)	Rump Fat (mm)	RBV %	IMF %	NFI-F (kg/day)	Doc
+1.7	-4.4	+56	+8.7	+0.8	+0.2	+1.4	+1.8	+0.15	-16	
85%	47%	82%	79%	81%	76%	76%	78%	61%	79%	

Traits Observed: Genomics(CE,S-Step)

Bplan Stats: Number of Herds: 10, Prog Analysed: 72, Genomic Prog: 35

Selection Index Values	Angus Breeding	Domestic	Heavy Grain	Heavy Grass
	+\$110	+\$123	+\$103	+\$112

Notes: Aviator is one of the most admired bulls by Australian visitors to the US in recent years. Only 30 straws of semen came to this country. Used by ET with some of our best cows, the progeny are strong on calving ease and maternal strength. Pick Lot 53.



Angus Youth Roundup 2019 - Sam Rendall, Miles Wellman, Millie Thompson, Ollie Thompson and their "coach" Kate Fairlie. The kids loved this experience - a credit to the Angus Community.

REFERENCE SIRES (RETURNING)

MILLAH MURRAH KLOONEY K42^{PV}

Ident: NMMK42

Calved: 30/01/2014

Registration Level: HBR

Genetic Status: AMF,CAF,DDF,NHF

V D A R NEW TREND 315[#]
 B/R NEW DESIGN 036[#]
 B/R BLACKCAP EMPRESS 76[#]
NGMT30 BOOROOMOOKA THEO T030^{SV}
 GLENOCH MEGAFORCE+92^{SV}
 BOOROOMOOKA QUAIN T Q34+95[#]
 BOOROOMOOKA GRISELDA[#]

TE MANIA BERKLEY B1^{PV}
 TE MANIA EMPEROR E343^{PV}
 TE MANIA LOWAN Z74^{PV}
NMMH4 MILLAH MURRAH PRUE H4^{SV}
 CARRINGTON PARK TIME ON B7^{PV}
 MILLAH MURRAH PRUE F12^{PV}
 MILLAH MURRAH PRUE D85^{PV}

Mid-July 2019 Angus Australia BREEDPLAN									
	Calv. Ease Direct	Calv. Ease Dtrs	Gest Lgth	Birth Wt. (kg)	200 Day (kg)	400 Day (kg)	600 Day (kg)	Mat. Cow (kg)	Milk (kg)
EBV	+2.8	+1.7	-6.5	+5.9	+49	+92	+109	+95	+18
Acc	89%	81%	99%	98%	97%	98%	97%	88%	82%
Scrot. Size (cm)	Days to Calv.	Carc Wt. (kg)	EMA (sqcm)	Rib Fat (mm)	Rump Fat (mm)	RBV %	IMF %	NFI-F (kg/day)	Doc
+1.8	-6.4	+66	+6.3	+0.1	-2.0	+0.5	+2.6	+0.26	+5
97%	68%	90%	90%	91%	89%	84%	89%	82%	96%

Traits Observed: GL,BWT,200WT,400WT,SC,Scan(EMA,Rib,Rump,IMF),DOC,Genomics(CE,S-Step)

Bplan Stats: Number of Herds: 81, Prog Analysed: 1287, Genomic Prog: 162

Selection Index Values	Angus Breeding	Domestic	Heavy Grain	Heavy Grass
		+\$128	+\$123	+\$144

Notes: Klooney's genes will underpin our herd for generations. He was the \$80,000 2nd high selling bull of the breed in 2015 and now has calves in 80 Australian herds, with progeny across the globe. Semen sales grow and grow as breeders appreciate the consistency of high quality phenotype Klooney transmits. A bull with no apparent weakness, the true mark of a sire is that Klooney sons are now coming to the fore. He is the only bull in the breed with three sons to sell at \$40,000 or more, with ABS sire Marlon Brando M304 an early pin up. Pick Lot 39.

MILLAH MURRAH KINGDOM K35^{PV}

Ident: NMMK35

Calved: 29/01/2014

Registration Level: HBR

Genetic Status: AMF,CAF,DDF,NHF

WAITARA VALLEY BIG MAX[#]
 WAITARA VALLEY TEX[#]
 WAITARA VALLEY L578[#]

NZE469 HINGAIA 469[#]
 BACK TRACK P&P ROYAL 28[#]
 HINGAIA 910[#]
 HINGAIA D208[#]

LEACHMAN RIGHT TIME^{SV}
 BT RIGHT TIME 24J[#]
 SITZ EVERELDA ENTENSE 1905[#]
NMMG41 MILLAH MURRAH FLOWER G41^{PV}
 BON VIEW NEW DESIGN 1407[#]
 MILLAH MURRAH FLOWER C15^{SV}
 MILLAH MURRAH FLOWER A81^{PV}

Mid-July 2019 Angus Australia BREEDPLAN									
	Calv. Ease Direct	Calv. Ease Dtrs	Gest Lgth	Birth Wt. (kg)	200 Day (kg)	400 Day (kg)	600 Day (kg)	Mat. Cow (kg)	Milk (kg)
EBV	-10.3	-4.2	-2.7	+9.0	+56	+100	+143	+151	+9
Acc	89%	80%	99%	99%	98%	98%	98%	90%	88%
Scrot. Size (cm)	Days to Calv.	Carc Wt. (kg)	EMA (sqcm)	Rib Fat (mm)	Rump Fat (mm)	RBV %	IMF %	NFI-F (kg/day)	Doc
+1.0	-5.4	+65	+8.0	-0.7	+0.0	+1.1	-0.3	-0.59	+14
98%	69%	91%	91%	91%	89%	87%	89%	84%	97%

Traits Observed: BWT,200WT,400WT,SC,Scan(EMA,Rib,Rump,IMF),DOC,Genomics(CE,S-Step)

Bplan Stats: Number of Herds: 91, Prog Analysed: 1582, Genomic Prog: 191

Selection Index Values	Angus Breeding	Domestic	Heavy Grain	Heavy Grass
		+\$101	+\$88	+\$94

Notes: The master of phenotype and structural integrity, Kingdom is the \$150,000 breed record bull. Breeders across the globe continue to use Kingdom as a type fixer. At New Zealand's Kaharau bull sale in June, 14 Kingdom sons sold to \$78,000 and averaged almost \$20,000. This replicated his popularity at Australian sales over the past couple of years, as cattlemen look to emphasise weight gain and phenotype over fancy EBV's. Pick Lot 9.

Kingdom K35 at 5 years

Klooney K42 at 5 years



REFERENCE SIRES (RETURNING)

COONAMBLE HECTOR H249^{SV}

Ident: WDCH249

Calved: 4/08/2012

Registration Level: HBR

Genetic Status: AMFU,CAFU,DDFU,NHFU

LEACHMAN RIGHT TIME^{SV}

HYLINE RIGHT TIME 338[#]

HYLINE PRIDE 265[#]

USA14885809 K C F BENNETT PERFORMER[#]

JAUER 353 TRAVELER 589 27[#]

K C F MISS 589 L182[#]

C S U MISS AMBUSH 5193[#]

B S S LIMITED DESIGN[#]

COONAMBLE Z3^{PV}

IMRAN ROSEBUD U17[#]

WDCE9 COONAMBLE E9^{PV}

VERMILION DATELINE 7078[#]

BANGADANG LOWAN A61^{PV}

BANGADANG KATE W19[#]

Mid-July 2019 Angus Australia BREEDPLAN									
	Calv. Ease Direct	Calv. Ease Dtrs	Gest Lgth	Birth Wt. (kg)	200 Day (kg)	400 Day (kg)	600 Day (kg)	Mat. Cow (kg)	Milk (kg)
EBV	+1.7	-0.9	-9.0	+4.2	+43	+76	+102	+90	+5
Acc	85%	74%	98%	98%	97%	97%	97%	89%	85%
Scrot. Size (cm)	Days to Calv.	Carc Wt. (kg)	EMA (sqcm)	Rib Fat (mm)	Rump Fat (mm)	RBV %	IMF %	NFI-F (kg/day)	Doc
+1.1	-3.3	+63	+9.3	+1.7	+2.4	+1.0	+0.7	-0.53	+39
96%	65%	90%	90%	91%	89%	87%	88%	82%	94%

Traits Observed: BWT,200WT,400WT,SC,Scan(EMA,Rib,Rump,IMF),Genomics(CE,S-Step)

Bplan Stats: Number of Herds: 43, Prog Analysed: 821, Genomic Prog: 161

Selection Index Values	Angus Breeding	Domestic	Heavy Grain	Heavy Grass
	+\$111	+\$108	+\$101	+\$116

Notes: Hector is sire of the Australasian record priced Angus animal Prue M4, who sold to Brooklana Angus in 2017 for \$190,000. At both our 2017 & 2018 bull sales Hector progeny were the 2nd high averaging sire group. Similar results have been achieved at Coonamble and other sales where his progeny have sold. Hector's sons in the sale are packed with the meat and stunning phenotype for which he is renowned. Pick Lot 13.

ASCOT HALLMARK H147^{PV}

Ident: QQFH147

Calved: 5/08/2012

Registration Level: HBR

Genetic Status: AMFU,CAFU,DDF,NHFU

TE MANIA YORKSHIRE Y437^{PV}

TE MANIA BERKLEY B1^{PV}

TE MANIA LOWAN Z53[#]

VTME343 TE MANIA EMPEROR E343^{PV}

B T ULTRAVOX 297E[#]

TE MANIA LOWAN Z74^{PV}

TE MANIA LOWAN V201[#]

BOOROOMOOKA NEUTRON A238^{PV}

MILLAH MURRAH DIGBY D108^{PV}

MILLAH MURRAH FLOWER A70^{PV}

NMMF123 MILLAH MURRAH BRENDA F123^{PV}

TE MANIA INFINITY 04 379 AB[#]

MILLAH MURRAH BRENDA D113^{PV}

MILLAH MURRAH BRENDA B21^{PV}

Mid-July 2019 Angus Australia BREEDPLAN									
	Calv. Ease Direct	Calv. Ease Dtrs	Gest Lgth	Birth Wt. (kg)	200 Day (kg)	400 Day (kg)	600 Day (kg)	Mat. Cow (kg)	Milk (kg)
EBV	-4.6	-1.0	-4.6	+7.4	+61	+112	+159	+142	+10
Acc	83%	72%	98%	98%	97%	97%	97%	93%	88%
Scrot. Size (cm)	Days to Calv.	Carc Wt. (kg)	EMA (sqcm)	Rib Fat (mm)	Rump Fat (mm)	RBV %	IMF %	NFI-F (kg/day)	Doc
+3.3	-8.5	+84	-1.3	+1.1	+1.8	-1.8	+2.5	+0.65	-1
96%	66%	91%	91%	92%	90%	88%	89%	84%	96%

Traits Observed: BWT,200WT,400WT,600WT,SC,Scan(EMA,Rib,Rump,IMF),Genomics(CE,S-Step)

Bplan Stats: Number of Herds: 52, Prog Analysed: 887, Genomic Prog: 190

Selection Index Values	Angus Breeding	Domestic	Heavy Grain	Heavy Grass
	+\$146	+\$112	+\$166	+\$135

Notes: Hallmark starred at our 2018 bull sale when his son Nugget N266 set the \$54,000 all breeds record price for a yearling bull. Hallmark's real legacy however, is coming through his daughters. A genuine foot & udder improver, it is near the end of the Hallmark era as a direct sire of bulls. His sons in this sale carry the typical Hallmark body length and clean front end set up he is known for, with a clear pick at Lot 35.

Lot 13 Hector P38

Ascot Hallmark





IMPORTANT NOTICES FOR PURCHASERS

~ SALE CATALOGUE DISCLAIMER ~

All reasonable care has been taken by the vendor to ensure that the information provided in this catalogue is correct at the time of publication. However, neither the vendor nor the selling agents make any other representations about the accuracy, reliability or completeness of any information provided in this catalogue and do not assume any responsibility for the use or interpretation of the information included in this catalogue. You are encouraged to seek independent verification of any information contained in this catalogue before relying on such information.

~ DNA PATERNITY VERIFICATION ~

It is a requirement of Angus Australia that all bulls used to sire calves for registration in the Angus Australia Herd Book Register, Red Angus Register or Angus Performance Register must have been DNA paternity verified if they are born in or after the 'Y' year (2003). Buyers intending to use bulls listed in this catalogue to produce calves to be registered in these registers should obtain DNA paternity verification on those bulls before they are used for breeding.

~ PRIVACY INFORMATION ~

In order for Angus Australia to process the transfer of a registered animal in this catalogue, the vendor will need to provide certain information to Angus Australia and the buyer consents to the collection and disclosure of that information by Angus Australia in certain circumstances. If the buyer does not wish for his or her information to be stored and disclosed by Angus Australia, the buyer must complete the form included below and forward it to Angus Australia. If the form is not completed, the buyer will be taken to have consented to the disclosure of such information.

BUYER'S OPTION TO OPT OUT OF DISCLOSING PERSONAL INFORMATION TO THE ANGUS AUSTRALIA

If you do not complete this form, you will be taken to have consented to Angus Australia using your name, address and phone number for the purposes of effecting a change of registration of the animal(s) that you have purchased, maintaining its databases and disclosing that information to its members on its website.

*I, the buyer of animals with the following registration numbers
..... from
member (name) do not consent to Angus Australia
using my name, address and phone number for the purposes of effecting a change of registration of
the following animal(s) that I have purchased, maintaining its databases and disclosing that
information to its members on its website.*

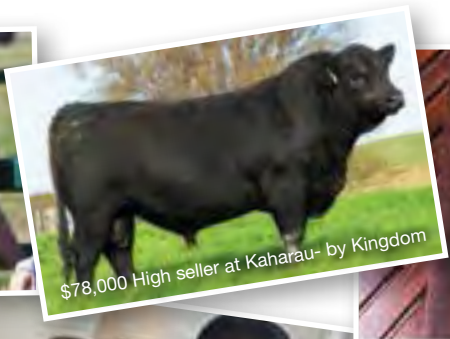
Signature:

Date:

*Please forward this completed consent form to Angus Australia, Glen Innes Road, Locked Bag 11,
Armidale NSW 2350. If you have any queries, please telephone 02 6772 3011 or
e-mail office@angusaustralia.com.au.*



Ben Edwards



\$78,000 High seller at Kaharau- by Kingdom



Andrew & Roz Larnach 'Best Pen of Steers' CTLX Blue Ribbon Weaner Sale 2019



Sam Rendall



Jan & Richard Buck with Ross in 2008. Richard recently retired after 25 years as secretary of the NSW Angus Committee, culminating with the Angus 100th anniversary Sydney Show exhibition. An amazing servant to the industry.



Sydney Show 2019. Millah Murrah returned after a 28 year absence for the Angus 100th anniversary exhibition.



Mike Cameron and Chad Hall - Cheryton Angus WA



Mike Wilson



Millie Thompson



William & Karen McLaren, Netherton Angus in Scotland, visiting Millah Murrah after William judged at Sydney Show. They're using Kingdom, Klooney and Loch Up in their herd.



Faye & John Roberts



Ollie Thompson



Andrew Bickford & Paul Dooley



Judy Webb 1925 - 2018 Life long friend to us all



Ollie Thompson



Twiggy Thompson



Brian Martin



Winsome "Win" Thompson 1929-2019





MILLAH MURRAH ANGUS

See video of bulls at

www.millahmurrah.com

Please bring this catalogue to the sale.